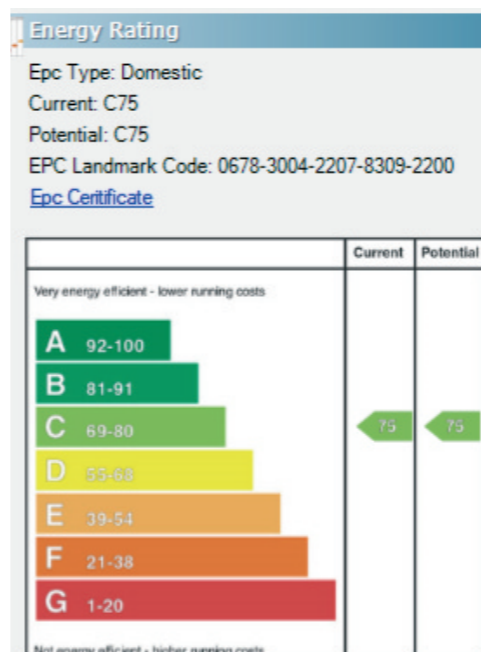
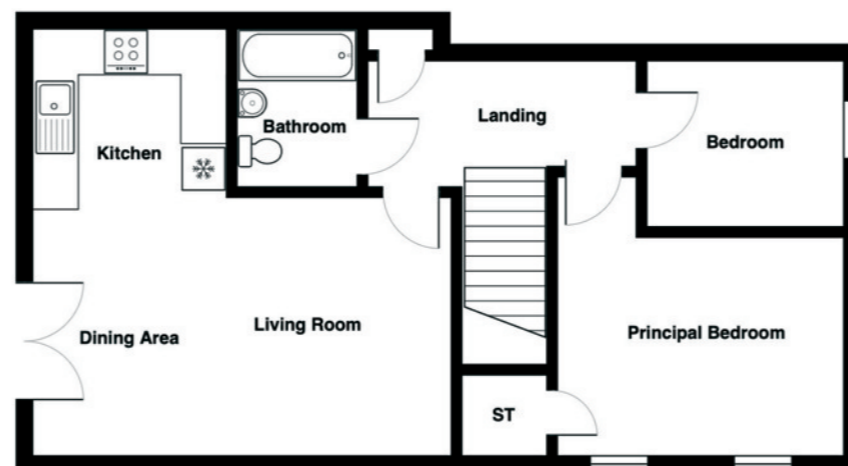


Outside

One allocated parking space, visitor spaces.

TEMPLETON  
ROBINSON

TEMPLETON  
ROBINSON



Lisburn Road - 028 90 66 3030  
 Ballyhackamore - 028 90 65 0000  
 North Down - 028 90 42 4747  
 Lisburn - 028 92 66 1700  
[www.templetonrobinson.com](http://www.templetonrobinson.com)



These particulars do not constitute any part of an offer or contract. None of the statements contained in these particulars are to be relied on as statements or representations of fact and intending purchasers must satisfy themselves by inspection or otherwise to the correctness of each of the statements contained in these particulars. The Vendor does not make or give, neither Templeton Robinson, nor any person in its employment has any authority to make or give, any representation or warranty whatever in relation to this property. All dimensions are taken to nearest 3 inches.



Enjoying an elevated aspect this deceptively spacious first floor apartment is beautifully presented throughout providing an ideal opportunity for a first-time buyer, downsizer or investor.

Briefly the accommodation comprises a bright, generous living room with dining area and double doors onto Juliette balcony, modern open plan kitchen with integrated appliances, two well-proportioned bedrooms and contemporary white bathroom suite. Additional features include gas heating and double glazing throughout.

Situated in a prime location within a secure gated development benefiting from allocated parking and landscaped communal gardens. Early viewing is highly recommended.

**Offers Over  
£129,950**

Apt 2 Fairview Court,  
 Ballykeel Road,  
 Moneyreagh,  
 BT23 6DU

Viewing by  
 appointment with  
 & through agent  
 028 9066 3030

Apt 2 Fairview Court,  
Ballykeel Road,  
Moneyreagh, BT23 6DU

## Property Features

- Beautifully presented, first floor apartment within a popular development just off the Ballykeel Road
- Bright, spacious living room with Juliette balcony
- Modern kitchen and dining area with integrated appliances
- Two well-proportioned bedrooms
- Contemporary white bathroom suite
- Gas heating/ Double glazing throughout
- Secure allocated parking, Attractive landscaped communal gardens
- Convenient location close to local schools, convenient store and bus links to Belfast City Centre
- Early viewing is highly recommended

## Location:

Driving along Church Road, turn left onto Ballykeel Road and Fairview Court is the second on the left.

## Property Comprises

### Ground Floor

uPVC front door to entrance level. Stairs to . . .

### First Floor

HALLWAY: Carpeted, gas fired boiler.

LIVING ROOM: 18' 6" x 18' 5" (5.64m x 5.61m) (at widest points).

Carpeted, double doors to Juliette balcony. Open plan to . . .

KITCHEN: Range of high and low level units, laminate work surfaces, built-in oven, ceramic hob with extractor above, integrated washing machine and fridge freezer, stainless steel sink with mixer tap, vinyl flooring, Velux window.

BEDROOM (1): 12' 6" x 8' 8" (3.81m x 2.64m) Carpeted.

BEDROOM (2): 8' 6" x 7' 4" (2.59m x 2.24m) Carpeted.

BATHROOM: 6' 9" x 5' 5" (2.06m x 1.65m) Bath with overhead shower, low flush wc, floating wash hand basin, chrome heated towel rail, extractor fan, vanity unit, vinyl flooring.

