


Blaris Drive, Lisburn, County Down, BT27

Asking Price: £239,950
Freehold

 **Reeds Rains**

reedsrains.co.uk

Blaris Drive, Lisburn, County Down, BT27

Asking Price: £239,950 Freehold

Council Tax Band:

EPC Rating: TBC

A truly stunning semi-detached family home located in the ever popular area of Blaris Meadows, an enviable address for many with convenience to Sprucefield shopping centre, the Lagan Tow Path, great road access to the M1 and A1 road networks to further afield.

Reception Hall

Wooden panelling

WC

Lounge

15'1" x 11'9" (4.6m x 3.58m)

Feature fireplace with stove inset, granite hearth.

Kitchen/ Dining Area

19'3" x 12'8" (5.87m x 3.86m)

Luxury fitted range of high and low level cabinets, laminate work tops, single drainer stainless steel sink unit mixer tap, gas hob and electric oven, integrated fridge/ freezer and dishwasher, gas fired boiler, tiled flooring, larder cupboard, plumbed for washing machine, French doors to rear patio, Recessed lighting.

Landing

Master Bedroom

13'5" x 12'2" (4.1m x 3.7m)

En-Suite

Separate shower cubicle with controlled shower, rain shower head, low level WC, wash hand basin, wall and floor tiling.

Bedroom 2

12'2" x 11'1" (3.7m x 3.38m)

Bedroom 3

9'6" x 8'3" (2.9m x 2.51m)

Bathroom

Deluxe white suite comprising panelled bath, wash hand basin, low level WC, wall and floor tiling, shower with rain shower head.

Driveway/ Car parking

To side.

Enclosed Rear Gardens

Large paved patio, enclosed gardens in neat lawns and flower beds.

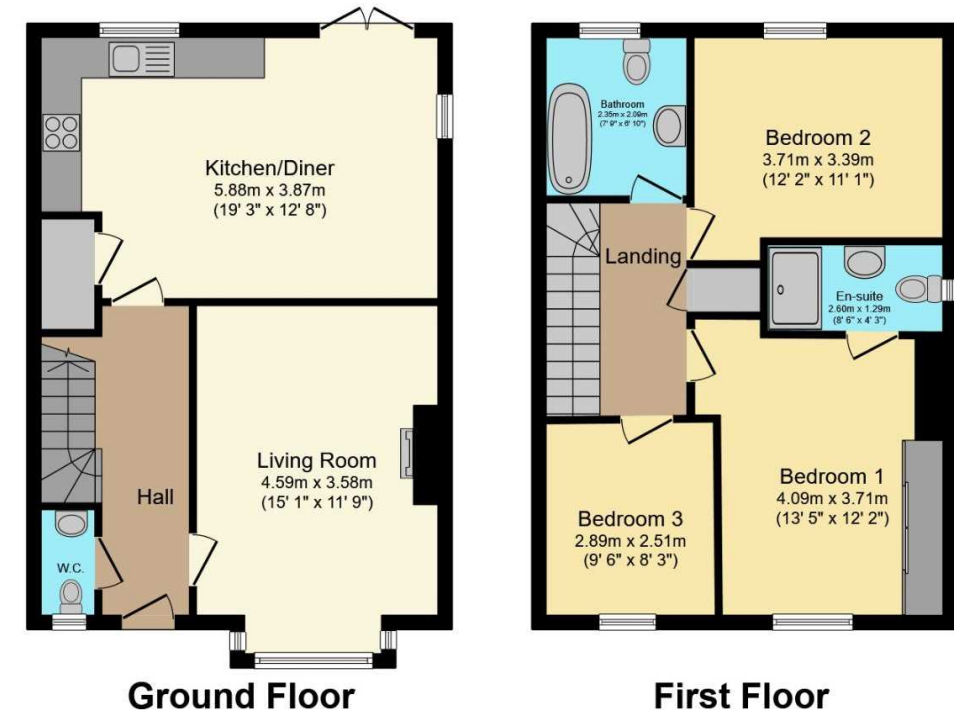
The Reeds Rains branches at 350 Upper Newtownards Road, Ballyhackamore, Belfast, N Ireland BT4 3EX, 18 Main Street, Bangor, Co Down, N Ireland BT20 5AG, Somerset House, 240-242 Ormeau Road, Belfast, Co Antrim, N Ireland BT7 2FZ, 10 High Street, Carrickfergus, Co Antrim, N Ireland BT38 7AF, 8/8A Carnmoney Road, Glengormley, County Antrim, N Ireland BT36 6HN, 14/16 Market Street, Lisburn, County Antrim, N Ireland BT28 1AB and 2 Frances Street, Newtownards, County Down, N Ireland BT23 4JA are operated by Favscos NI Limited which is independently owned and operated under a Licence from Reeds Rains Limited.

All Measurements
All Measurements are Approximate.

Laser Tape Clause
All measurements have been taken using a laser tape measure and therefore, may be subject to a small margin of error.

Floorplan Clause
Measurements are approximate. Not to Scale. For illustrative purposes only.

For full EPC please contact the branch.



Total floor area 101.8 m² (1,096 sq.ft.) approx

This floor plan is for illustrative purposes only. It is not drawn to scale. Any measurements, floor areas (including any total floor area), openings and orientation are approximate. No details are guaranteed, they cannot be relied upon for any purpose and they do not form part of any agreement. No liability is taken for any error, omission or misstatement. A party must rely upon its own inspection(s).
Powered by www.focalagent.com

We may refer you to recommended providers of ancillary services such as Conveyancing, Mortgages, Insurance and Surveying. We may receive a referral fee for recommending their services. You are not under any obligation to use the services of the recommended provider, which may also be an associated company of Reeds Rains.

Other important information which you will need to know about this property can be found at reedsrains.co.uk