



## 108 Portglenone Road, Randalstown, BT41 3EL

£650 Per month



Located on the outskirts of Randalstown, this well presented two bedroom semi-detached house offers modern living accommodation with excellent outdoor space.

Recently renovated to a high standard, this fine home is literally ready for occupation.

Pets/Smoking are not permitted at the property.

Potential tenants will be asked to complete an application form (for which there is no charge) and a guarantor will be required.

The application form can be found here: [harryclarke.co.uk/tenancy-application/](http://harryclarke.co.uk/tenancy-application/).

## Property Features

- Recently renovated semi detached house
- Two formal reception rooms including a living room and dining room
- Modern fitted kitchen
- Three well proportioned first floor bedrooms
- Bathroom fitted with a shower, WHB and W/C
- Oil fired heating system (condensing boiler)
- PVC double glazed external windows
- Large garage
- Ample car parking space to the front
- Large back garden, laid in lawn



## Accommodation

(Dimensions and Areas are approximate)

**Ground Floor 12'7" x 3'6" (3.86 x 1.07)**

PVC Front Door

**Living Room 10'10" x 9'8" (max) (3.32 x 2.95 (max))**

Adam style fireplace surround and tiled hearth.

**Dining Room 11'7" x 9'7" (max) (3.55 x 2.93 (max))**

Built in Hot Press.

**Kitchen 14'2" x 6'9" (4.32 x 2.06)**

Modern fitted kitchen with a range of shaker style eye and low level units. Laminate worksurfaces. Integrated fridge/freezer. Integrated oven & hob, with stainless steel extractor canopy over.

**First Floor**

**Landing**

**Bedroom 1 13'8" x 9'8" (max) (4.17 x 2.96 (max))**

**Bedroom 2 9'6" x 9'2" (2.9 x 2.8)**

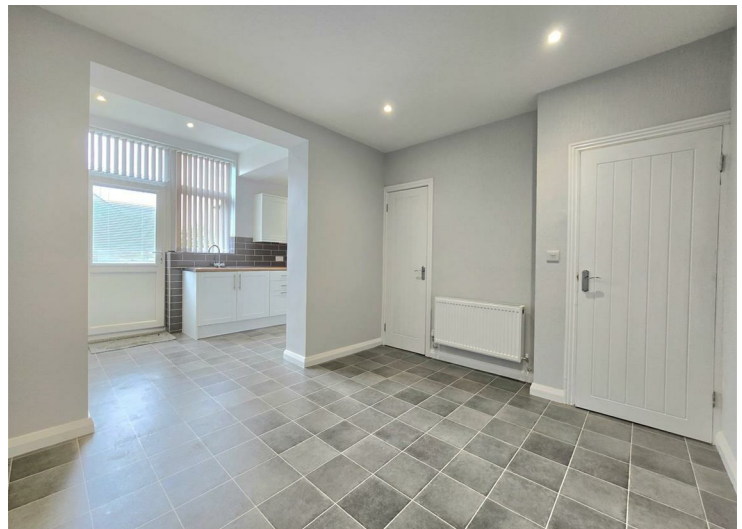
**Bathroom 7'4" x 4'8" (2.24 x 1.43)**

Fitted with a shower (electric), wash hand basin and W/C.

**Outside**

**Garage 18'0" x 18'7" (5.5 x 5.68)**

**Small Store**

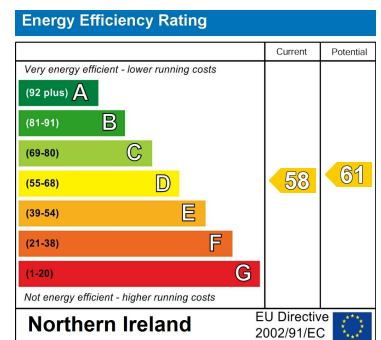




### Area Map



### Energy Efficiency Graph



Harry Clarke & Company is a trading entity of Harry Clarke & Company Limited. Registered in N.I. Company Number NI643802

**Disclaimer-** These particulars do not constitute any part of an offer or contract. None of the statements contained in these particulars are to be relied on as statements or representatives of fact and intending purchasers must satisfy themselves by inspection or otherwise to the correctness of each of the statements contained in these particulars. The vendor does not make or give, neither Harry Clarke & Company, nor any person in it's employment has any authority to make or give any representation or warranty whatever in relation to this property. All dimensions are approximate.

42 Mill Street, Ballymena BT43 5AE || 028 256 48829 || info@harryclarke.co.uk

