

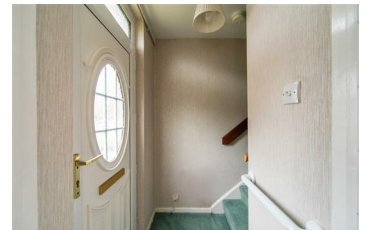


15 Cashel Walk, Newtownabbey, BT37 0EX

£750 Per Month



Well presented, three bedroom, mid terrace property with fully enclosed low maintenance rear garden, conveniently located within the popular Monkstown area of Newtownabbey. The property comprises entrance hall, lounge with focal point fireplace, kitchen with informal dining area, rear hall, three well proportioned first floor bedrooms, and wet-room style shower room with three piece suite. Externally the property enjoys access to communal parking area to rear and low maintenance gardens front and rear. Other attributes include gas fired central heating, PVC double glazing and convenient location. Early viewing highly recommended to avoid disappointment.



INVESTORS IN PEOPLE
We invest in people Gold

PRS Property Redress Scheme

Proudly sponsoring



WE ARE MACMILLAN.
CANCER SUPPORT

Awards

