

51 Main Street
Newcastle
Co. Down
BT33 0AD



t: 028 437 23220
e: info@jameswilson.co.uk
w: jameswilson.co.uk

'Tara'

25 Oldtown Lane

Annalong

BT34 4XF



Detached House with Granny Flat

Welcome to 'Tara', a stunning detached family residence nestled in beautiful surroundings at the foot of the Mourne Mountains. Located just outside the picturesque fishing village of Annalong with Newcastle and Kilkeel only a short drive away, this home presents an excellent opportunity to acquire property which includes stables, stores and a Granny Flat. Internally, the property consists of well-appointed, spacious rooms, perfect for family living.



- **2 Reception Rooms**
- **Kitchen/Dining Area, Utility Room**
- **4 Bedroom**
- **Large Store, Stables, 2 Open Stores**
- **Gravel Driveway**
- **2 Bedroom Granny Flat**
- **PVC Double Glazed Windows**
- **Oil Fired Central Heating**
- **Offers in the Region Of £495,000**

THE PROPERTY COMPRISES:

Entrance Hall:

PVC double glazed door, tiled floor, oak ceiling with recessed lights.



Cloakroom:

WC and WHB, oak ceiling.

Sitting Room:

13' 11" x 13' 3" (4.24m x 4.04m) Feature fireplace (no flue), pine surround with cast iron inset and electric fire, oak floor, oak ceiling, recessed lights.



Kitchen/Dining Area:

25' 4" x 12' 0" (7.72m x 3.65m) (both widest) High and low level units with painted pine doors, granite worksurface and stainless steel sink, integrated gas hob, extractor fan, high level oven, oak ceiling, tiled floor, part wall tiling, French doors to living room.



Living Room:

Brick feature fireplace with multi-fuel burning stove, polished granite hearth, door to rear.



Utility Room:

14' 7" x 8' 11" (4.44m x 2.72m) (both widest)

Low level units with stainless steel sink and drainer, airing cupboard, store room, tiled floor, oak ceiling.

Bedroom 1:

10' 6" x 14' 8" (3.20m x 4.47m) Oak floor, built-in wardrobe, oak ceiling. Ensuite comprising WC, WHB, shower cubicle with thermostatic shower, tiled floor.



Oak Staircase to First Floor:

Spacious landing, oak floor, built-in shelves and display cabinet.



Bedroom 2:

13' 11" x 12' 1" (4.24m x 3.68m) Oak floor. Ensuite comprising WC, WHB, shower cubicle with thermostatic shower, oak floor, part wall tiling, built-in wardrobes.



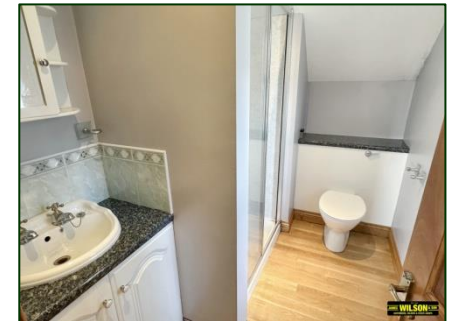
Bedroom 3:

11' 6" x 13' 11" (3.50m x 4.24m) Oak floor.



Bedroom 4:

14' 8" x 14' 9" (4.47m x 4.49m) Oak floor. Ensuite comprising WC, vanity unit with WHB, shower cubicle with thermostatic shower.



Granny Flat

Hall

Sitting Room:

18' 4" x 16' 6" (5.58m x 5.03m) (both widest) Laminate floor, brick feature fireplace with stove, storage cupboard.



Kitchen:

12' 9" x 10' 3" (3.88m x 3.12m) High and low level units with laminate cupboards and worksurfaces, stainless steel sink and drainer, plumbed for washing machine, Rangemaster cooker, stainless steel extractor fan, laminate floor.



First Floor:

Landing open to bedroom 1.

Bedroom 1:

16' 6" x 18' 4" (5.03m x 5.58m)Pine floor.



Bedroom 2:

10' 7" x 10' 11" (3.22m x 3.32m)Pine floor.

Ensuite comprising WC, WHB, quadrant shower cubicle with electric shower.



Rear:

Boiler Room/ Utility Room.

External:

Front - Granite wall with metal gates and gravel driveway, lawn, trees and shrubs, vintage-style lamp posts.

Rear - Paved patio, concrete base for extension.

Yard - two open stores, two stables. Large Store - 35' 1" x 60' 4" (10.7m x 18.4m)



These particulars do not constitute any part of an offer or contract. None of the statements contained in these particulars are to be relied on as statements or representations of fact and any intending purchasers must satisfy himself by inspection or otherwise as to the correctness of the statements in these particulars. The vendor does not make or give, and neither James Wilson & Son, nor any person in their employment, has any authority to make or give any representation or warranty whatever in relation to this property. No appliances or equipment have been tested. Purchasers should satisfy themselves with regard to such items.