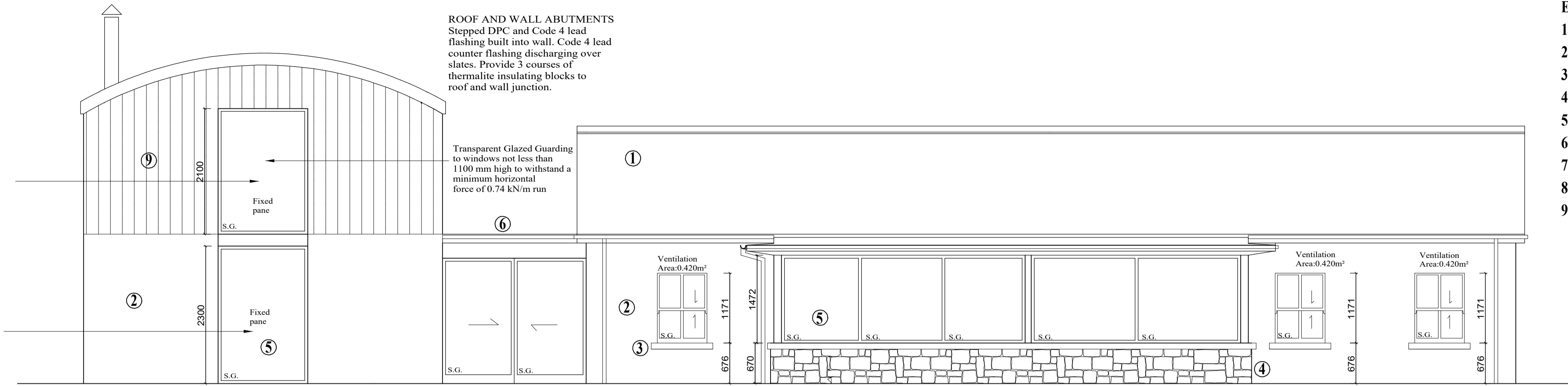


Low level glazing ( glass and frame ) that have a cill height less than 800mm above F.F.L., 600mm above external ground level to be fitted with safety glass, to be capable of withstanding a horizontal force of 0.74 kN.

Low level glazing ( glass and frame ) that have a cill height less than 800mm above F.F.L., 600mm above external ground level to be fitted with safety glass, to be capable of withstanding a horizontal force of 0.74 kN.



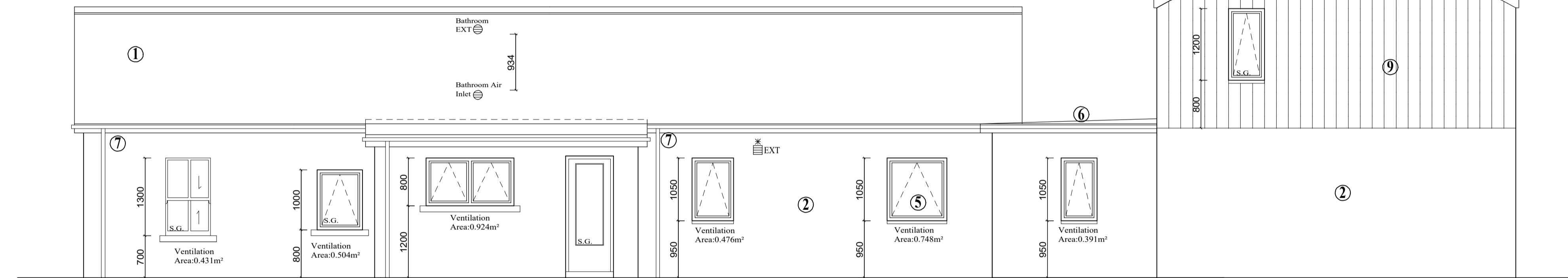
FRONT ELEVATION

Transparent Glazed Guarding to openable windows within 800mm of floor where the difference in height between external ground level and the openable section exceeds 0.6m to withstand a minimum horizontal force of 0.74 kN/m run

ROOF AND WALL ABUTMENTS  
Stepped DPC and Code 4 lead flashing built into wall. Code 4 lead counter flashing discharging over slates. Provide 3 courses of thermalite insulating blocks to roof and wall junction.

**EXTERNAL FINISHES**

- 1) Black slates
- 2) White smooth lime plaster walls
- 3) 100mm face depth sandstone window cills
- 4) Reclaimed stone from original dwelling
- 5) Grey triple glazed UPVC windows
- 6) Grey trocal flat roof covering
- 7) Black 100mm half round gutters and 63mm downpipes
- 8) Green non-drip corrugated iron roof covering
- 9) Grey larch cladding

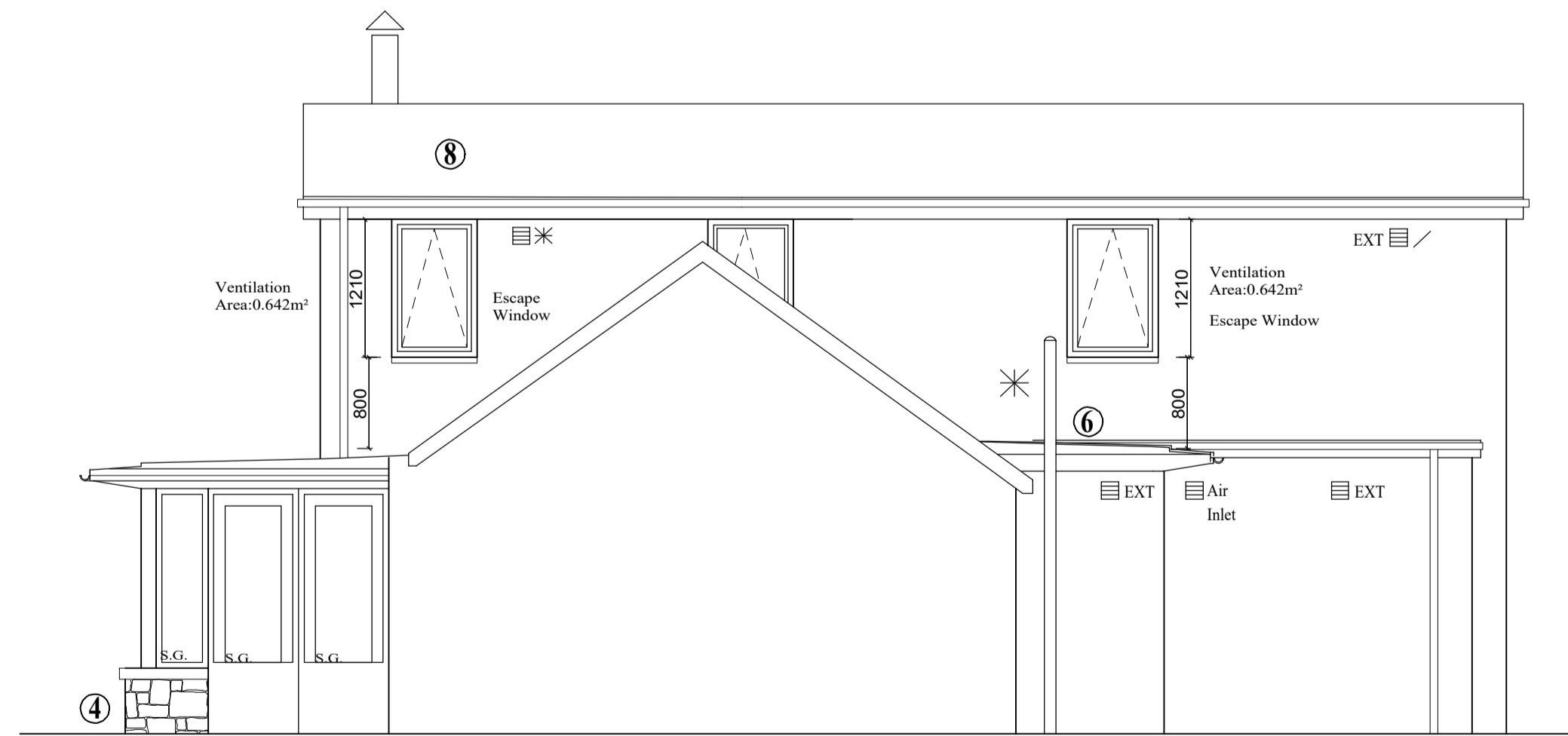


REAR ELEVATION

Low level glazing ( glass and frame ) that have a cill height less than 800mm above F.F.L., 600mm above external ground level to be fitted with safety glass, to be capable of withstanding a horizontal force of 0.36 kN.

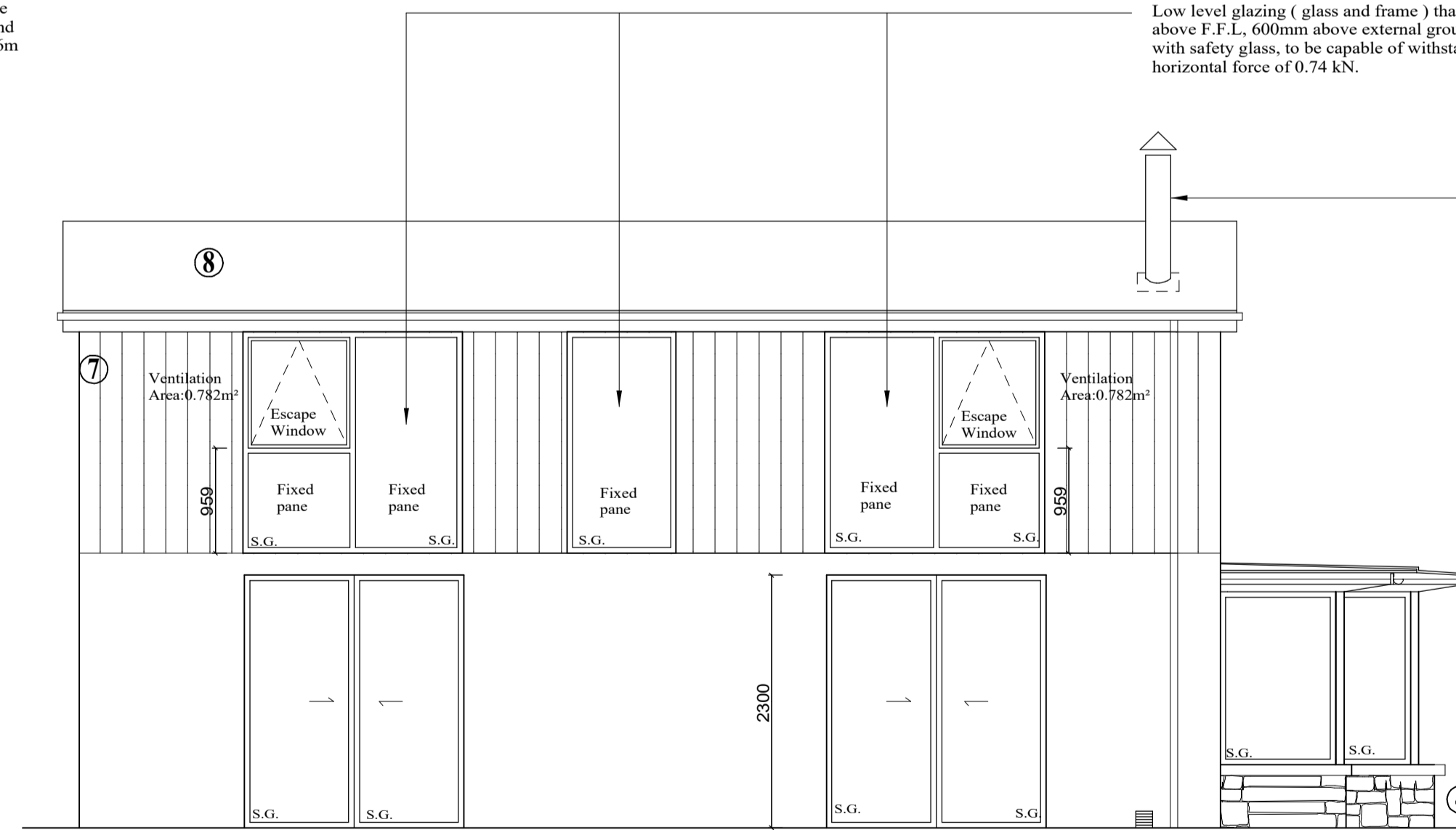
Transparent Glazed Guarding to openable windows within 800mm of floor where the difference in height between external ground level and the openable section exceeds 0.6m to withstand a minimum horizontal force of 0.74 kN/m run

Low level glazing ( glass and frame ) that have a cill height less than 800mm above F.F.L., 600mm above external ground level to be fitted with safety glass, to be capable of withstanding a horizontal force of 0.74 kN.



SIDE ELEVATION

Transparent Glazed Guarding to openable windows within 800mm of floor where the difference in height between external ground level and the openable section exceeds 0.6m to withstand a minimum horizontal force of 0.74 kN/m run



SIDE ELEVATION

Low level glazing ( glass and frame ) that have a cill height less than 800mm above F.F.L., 600mm above external ground level to be fitted with safety glass, to be capable of withstanding a horizontal force of 0.36 kN.

150mm diameter permanently open under floor vent. Vent to provide air under stove

Double skin stainless steel insulated flue installed in accordance to manufactures details and must be certified to BS EN 1856-1:2009.