

17 Shaftesbury Drive, Bangor,
County Down, BT20 3GF

Asking Price: £119,950

 **Reeds Rains**

reedsrains.co.uk

17 Shaftesbury Drive, Bangor, County Down, BT20 3GF

Asking Price: £119,950

EPC Rating: 76 C

Description

This well presented first floor apartment is located in the ever popular Shaftesbury development, close to road access to Belfast and just a few minutes walk to Bangor West Halt. The property offers 2 bedrooms and a spacious lounge which in turn overlooks the gardens. A well appointed shaker kitchen, bathroom with white suite, double glazed windows and gas fired heating complete the impressive specification. Sold with vacant possession we have no hesitation in recommending immediate viewing.

Communal entrance

Lift and stair access to first floor.

Entrance Hall

Laminate wooden floor, intercom, , recessed spotlights. Built in cupboard with gas boiler.

Lounge

21'1" x 12'7" (6.43m x 3.84m)

Twin Velux windows, access to roof space, double glazed door to Juliet balcony. Sliding door to

Kitchen

10'5" x 6'6" (3.18m x 1.98m)

Single drainer stainless steel sink unit with mixer taps, excellent range of high and low level units with laminated work surfaces, built in oven and 4 ring hob, stainless steel chimney extractor fan, plumbed for washing machine, ceramic tiled floor, part tiled walls, recessed spotlights.

Bedroom 1

12'6" x 11'8" (3.8m x 3.56m)

Bedroom 2

11'9" x 8' (3.58m x 2.44m)

Bathroom

White suite comprising: Panelled bath with thermostatically controlled shower, pedestal wash hand basin, dual flush WC, ceramic tiled floor, part tiled walls, recessed spotlights.

Management Company

Charges TBC

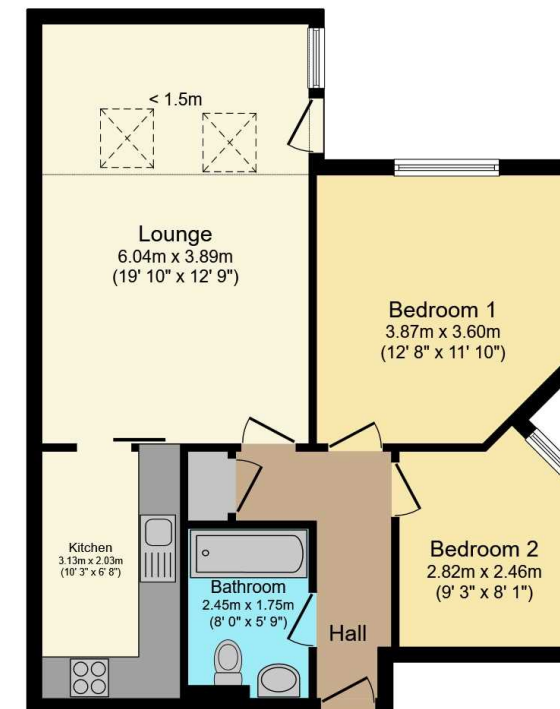
The Reeds Rains branches at 350 Upper Newtownards Road, Ballyhackamore, Belfast, N Ireland BT4 3EX, 18 Main Street, Bangor, Co Down, N Ireland BT20 5AG, Somerset House, 240-242 Ormeau Road, Belfast, Co Antrim, N Ireland BT7 2FZ, 10 High Street, Carrickfergus, Co Antrim, N Ireland BT38 7AF, 8/8A Carnmoney Road, Glengormley, County Antrim, N Ireland BT36 6HN, 14/16 Market Street, Lisburn, County Antrim, N Ireland BT28 1AB and 2 Frances Street, Newtownards, County Down, N Ireland BT23 4JA are operated by Favscos NI Limited which is independently owned and operated under a Licence from Reeds Rains Limited.

All Measurements
All Measurements are Approximate.

Laser Tape Clause
All measurements have been taken using a laser tape measure and therefore, may be subject to a small margin of error.

Floorplan Clause
Measurements are approximate. Not to Scale. For illustrative purposes only.

For full EPC please contact the branch.



Total floor area 54.3 m² (584 sq.ft.) approx
Restricted height 8.3 m² (90 sq.ft.)

This floor plan is for illustrative purposes only. It is not drawn to scale. Any measurements, floor areas (including any total floor area), openings and orientation are approximate. No details are guaranteed, they cannot be relied upon for any purpose and they do not form part of any agreement. No liability is taken for any error, omission or misstatement. A party must rely upon its own inspection(s).
Powered by www.focalagent.com

We may refer you to recommended providers of ancillary services such as Conveyancing, Mortgages, Insurance and Surveying. We may receive a referral fee for recommending their services. You are not under any obligation to use the services of the recommended provider, which may also be an associated company of Reeds Rains.

Other important information which you will need to know about this property can be found at reedsrains.co.uk