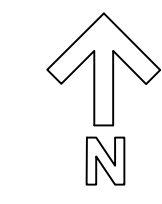


<b>JPC Consulting</b>				
The Rectory 2 Saint Judes Avenue Belfast BT7 2GZ p.02890 644 068 m.07746 087 195 e.jpcconsulting@gmail.com				
PROJECT	Clea Lough Road, Killyleagh			
DWG NAME	Proposed Access & Site Plan			
	DRAWN	DATE	SCALE	DWG NO
		Sept 2019	1:250 @ A1	JPC 001
				REVISION
				C
THIS DRAWING TO BE READ IN CONJUNCTION WITH ALL RELEVANT ARCHITECT'S AND ENGINEER'S DRAWINGS. THIS DRAWING REMAINS THE COPYRIGHT OF JPC CONSULTING.				



- Revision A Proposed access & sightlines updated Dec 2020
- Revision B Proposed access location & scale updated June 2021
- Revision C Proposed access revised & parking added June 2021

