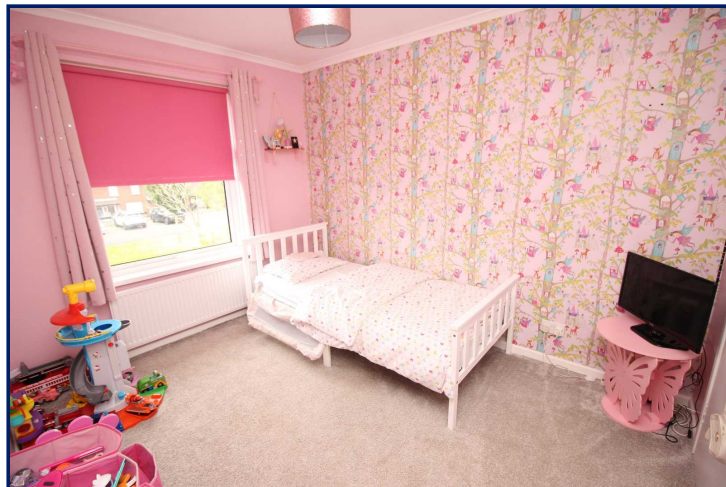


Energy Efficiency Rating		
	Current	Potential
Very energy efficient - lower running costs		
(92+) A		
(81-91) B		
(69-80) C		
(55-68) D	58	72
(39-54) E		
(21-38) F		
(1-20) G		
Not energy efficient - higher running costs		
England, Scotland & Wales	EU Directive 2002/91/EC	



Hillhall Road, Lisburn, County Down, BT27

Asking Price: £119,950
Leasehold

Reeds Rains

reedsrains.co.uk

Hillhall Road, Lisburn, County Down, BT27

Asking Price: £119,950 Leasehold

Council Tax Band:

EPC Rating: D

Charming 3-bed mid-terraced house with a beautiful garden in a prime location. This property boasts a spacious interior, modern kitchen, and stylish living area. Perfect for families seeking a comfortable and convenient home. Don't miss out on this fantastic opportunity!

The Reeds Rains branches at 350 Upper Newtownards Road, Ballyhackamore, Belfast, N Ireland BT4 3EX, 18 Main Street, Bangor, Co Down, N Ireland BT20 5AG, Somerset House, 240-242 Ormeau Road, Belfast, Co Antrim, N Ireland BT7 2FZ, 10 High Street, Carrickfergus, Co Antrim, N Ireland BT38 7AF, 8/8A Carnmoney Road, Glengormley, County Antrim, N Ireland BT36 6HN, 14/16 Market Street, Lisburn, County Antrim, N Ireland BT28 1AB and 2 Frances Street, Newtownards, County Down, N Ireland BT23 4JA are operated by Favscos NI Limited which is independently owned and operated under a Licence from Reeds Rains Limited.

Entrance Hall

Lounge

15'3" x 12'3" (4.65m x 3.73m)

Laminate flooring.

All Measurements

All Measurements are Approximate.

Laser Tape Clause

All measurements have been taken using a laser tape measure and therefore, may be subject to a small margin of error.

Kitchen/ Dining

13'7" x 10'7" (4.14m x 3.23m)

Extensive range of high and low level units, single drainer stainless steel sink unit, ceramic hob and electric oven, plumbed for washing machine, over head extractor fan, laminate flooring.

Floorplan Clause

Measurements are approximate. Not to Scale. For illustrative purposes only.

For full EPC please contact the branch.

Rear Hall

Landing

Bedroom 1

12'5" x 9'7" (3.78m x 2.92m)

Bedroom 2

10'7" x 9'2" (3.23m x 2.8m)

Built-in robes

Bedroom 3

10' x 7' (3.05m x 2.13m)

Bathroom

White suite comprising panelled bath, wash hand basin, low level WC, part tiled walls. Electric shower unit.

Outside

Paved patio and grass area.