

Apartment 6, Ballantine Square,  
Lisburn, County Down, BT27

**Asking Price: £229,950**  
**Leasehold**

 **Reeds Rains**

[reedsrains.co.uk](https://reedsrains.co.uk)

## Apartment 6, Ballantine Square, Lisburn, County Down, BT27

**Asking Price: £229,950 Leasehold**

Council Tax Band:

EPC Rating: TBC

Welcome to this charming upper floor/ penthouse apartment with passenger lift, located in a sought-after residential area.

### Entrance Hall

Tiled flooring.

### Kitchen/ Living / Dining Room

28'6" x 13'11" (8.69m x 4.24m)

Extensive range of contemporary high and low level units, laminate work tops, single drainer stainless steel sink unit, integrated fridge/ freezer, dishwasher and washing machine, gas hob and electric oven, tiled flooring open to lounge/ dining.

### Bedroom 1

13'3" x 11'4" (4.04m x 3.45m)

### En-suite

Separate shower cubicle with controlled shower, wash hand basin, low level WC, chrome towel rail.

### Bedroom 2

11'3" x 10'8" (3.43m x 3.25m)

### Bathroom

White suite comprising panelled bath, wash hand basin, low level WC, tiled flooring, part tiled walls, Chrome towel rail.

### Communal Gardens and Car Parking

To rear and front.

### Passenger Lift

From ground to top floor.

### Management Fees

Approx. £113 per month.

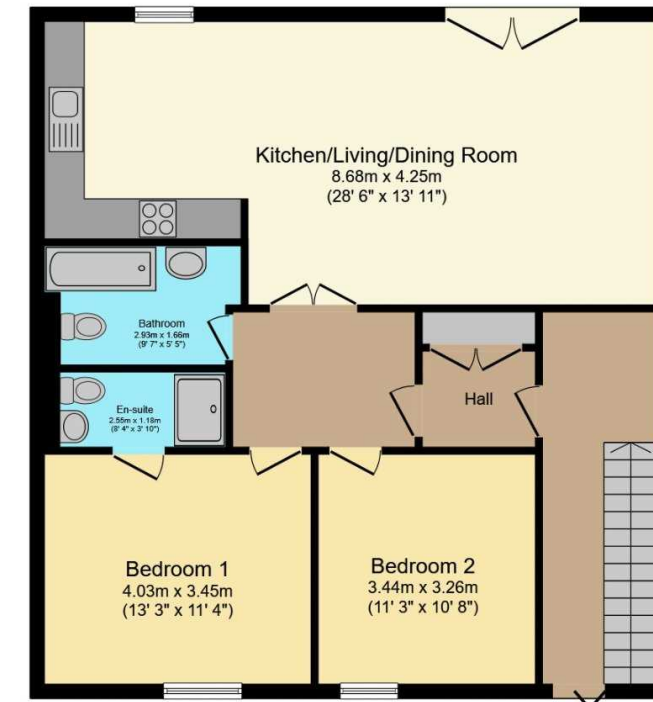
Co Down, N Ireland BT20 5AG, Somerset House, 240-242 Ormeau Road, Belfast, Co Antrim, N Ireland BT7 2FZ, 10 High Street, Carrickfergus, Co Antrim, N Ireland BT38 7AF, 8/8A Carrmoney Road, Glengormley, County Antrim, N Ireland BT36 6HN, 14/16 Market Street, Lisburn, County Antrim, N Ireland BT28 1AB and 2 Frances Street, Newtownards, County Down, N Ireland BT23 4JA are operated by Favscio NI Limited which is independently owned and operated under a Licence from Reeds Rains Limited.

All Measurements  
All Measurements are Approximate.

Laser Tape Clause  
All measurements have been taken using a laser tape measure and therefore, may be subject to a small margin of error.

Floorplan Clause  
Measurements are approximate. Not to Scale. For illustrative purposes only.

For full EPC please contact the branch.



Total floor area 91.2 m<sup>2</sup> (982 sq.ft.) approx

This floor plan is for illustrative purposes only. It is not drawn to scale. Any measurements, floor areas (including any total floor area), openings and orientation are approximate. No details are guaranteed, they cannot be relied upon for any purpose and they do not form part of any agreement. No liability is taken for any error, omission or misstatement. A party must rely upon its own inspection(s).  
Powered by [www.focalagent.com](http://www.focalagent.com)

The Reeds Rains branches at 350 Upper Newtownards Road, Ballyhackamore, Belfast, N Ireland BT4 3EX, 18 Main Street, Bangor,

We may refer you to recommended providers of ancillary services such as Conveyancing, Mortgages, Insurance and Surveying. We may receive a referral fee for recommending their services. You are not under any obligation to use the services of the recommended provider, which may also be an associated company of Reeds Rains.

Other important information which you will need to know about this property can be found at [reedsrains.co.uk](http://reedsrains.co.uk)