

Ashcroft Park, Lisburn, County Down, BT28

Asking Price: £239,950
Leasehold

 **Reeds Rains**

reedsrains.co.uk

Ashcroft Park, Lisburn, County Down, BT28

Asking Price: £239,950 Leasehold

Council Tax Band:

EPC Rating: TBC

Charming extended semi-detached 4-bedroom family home featuring a lovely garden and off-street parking. Spacious and well-maintained, this property offers a perfect blend of comfort and convenience. Located in a sought-after area, this home is ideal for families looking for a peaceful retreat.

Entrance Hall

Cloaks/ WC

Low level WC, wash hand basin.

Lounge

16'4" x 12'5" (4.98m x 3.78m)

Feature fireplace, laminate flooring

Kitchen/ Dining

19'11" x 9'11" (6.07m x 3.02m)

Extensive range of contemporary fitted high and low level units, Belfast sink unit, ceramic hob and electric oven, integrated dishwasher, breakfast bar, tiled flooring.

Conservatory

11'9" x 9'3" (3.58m x 2.82m)

Tiled flooring, French doors.

Landing

Built-in hot press.

Bedroom 1

13'1" x 9'11" (4m x 3.02m)

Laminate flooring, built-in robe

Bedroom 2

13'1" x 11'8" (4m x 3.56m)

Laminate flooring, built-in robe

Bedroom 3

13'6" x 7'10" (4.11m x 2.4m)

Laminate flooring, built-in robe

Bedroom 4

9'3" x 7'11" (2.82m x 2.41m)

Laminate flooring

Office / Study

laminate floorng

Bathroom

Deluxe white suite comprising panelled bath, wash hand basin, low level WC, separate shower cubicle, wall and floor tiling.

Garage

23'6" x 8'2" (7.16m x 2.5m)

Roller door, plumbed for washing machine, oil fired boiler.

Driveway/ Car Parking

To side

Southerly Rear Gardens

Impressive gardens in neat lawns, secluded and private with a Southerly facing aspect.

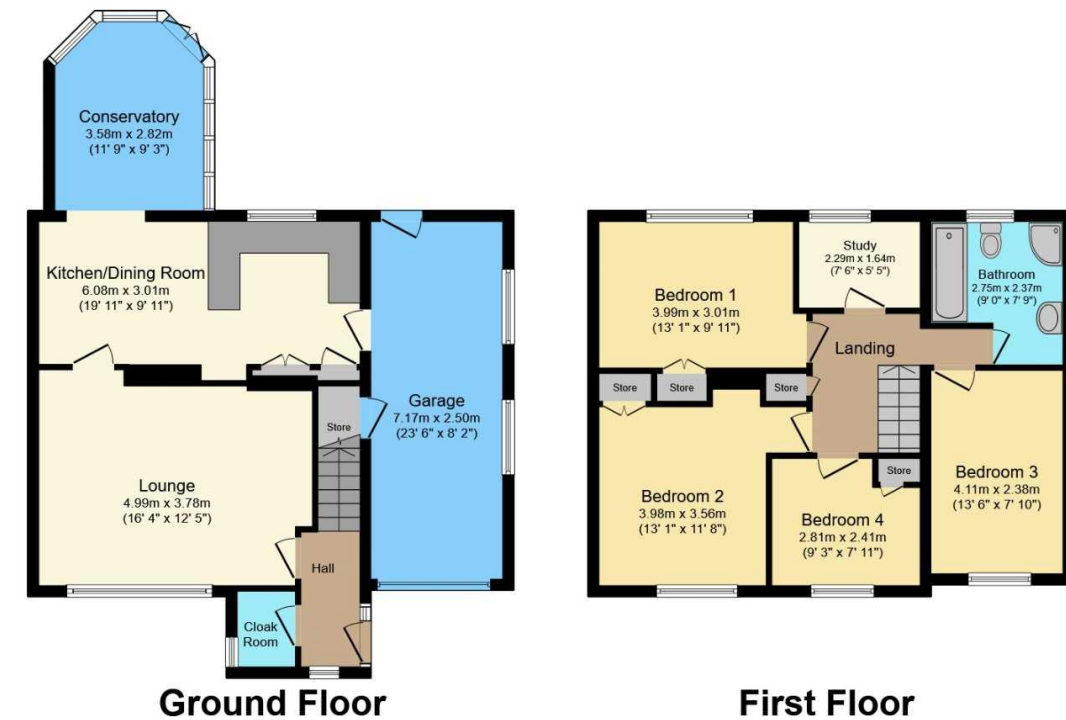
The Reeds Rains branches at 350 Upper Newtownards Road, Ballyhackamore, Belfast, N Ireland BT4 3EX, 18 Main Street, Bangor, Co Down, N Ireland BT20 5AG, Somerset House, 240-242 Ormeau Road, Belfast, Co Antrim, N Ireland BT7 2FZ, 10 High Street, Carrickfergus, Co Antrim, N Ireland BT38 7AF, 8/8A Carnmoney Road, Glengormley, County Antrim, N Ireland BT36 6HN, 14/16 Market Street, Lisburn, County Antrim, N Ireland BT28 1AB and 2 Frances Street, Newtownards, County Down, N Ireland BT23 4JA are operated by Favscos NI Limited which is independently owned and operated under a Licence from Reeds Rains Limited.

All Measurements
All Measurements are Approximate.

Laser Tape Clause
All measurements have been taken using a laser tape measure and therefore, may be subject to a small margin of error.

Floorplan Clause
Measurements are approximate. Not to Scale. For illustrative purposes only.

For full EPC please contact the branch.



Total floor area 133.4 m² (1,436 sq.ft.) approx

This floor plan is for illustrative purposes only. It is not drawn to scale. Any measurements, floor areas (including any total floor area), openings and orientation are approximate. No details are guaranteed, they cannot be relied upon for any purpose and they do not form part of any agreement. No liability is taken for any error, omission or misstatement. A party must rely upon its own inspection(s).
Powered by www.focalagent.com