



JOYCE CLARKE

TAKING YOU HOME

FOR SALE

16 Boconnel Court

Lurgan

BT66 6GA

Bedroom	4
Reception	1
Bathroom	4



Stunning detached family home with garage in a quiet cul de sac overlooking the green

Offers in Excess of: £264,950

Opening Times

Monday to Friday 9:00am - 5.30pm
Saturday 10:00am - 12.00pm
Sunday Closed

Open during lunchtime

Viewing strictly by appointment only

028 3833 1111

www.joyceclarke.team
sales@joyceclarke.team
2 West Street, Portadown, BT62 3PD



JOYCE CLARKE

TAKING YOU HOME

We are delighted to present this four bedroom detached property to the sales market. This home is immaculately presented and comprises of a bright living room with bay window and multi fuel stove, beautiful bespoke kitchen with coordinating peninsula island complete with seating, utility room and downstairs WC. To the first floor there are two double bedrooms, master with en-suite and a family bathroom with free standing bath. Additionally to the second floor we have two further double bedrooms and a shower room. This spacious detached four bedroom home is ideally situated within walking distance of schools and local amenities and Golf Club and is within easy reach of the M1. Within this popular development it is located in a quiet cul de sac position overlooking the green. The superior level of finish can only truly be appreciated upon viewing.



- Detached family home in a sought after development
- Fabulous kitchen with coordinating peninsula island
- Living room with bay window and multi fuel stove
- Downstairs WC and utility room
- Four bedrooms (master bedroom with en suite)
- Family bathroom with freestanding bath
- Fully enclosed garden to rear with patio
- Detached garage



Score	Energy rating	Current	Potential
92+	A		
81-91	B		
69-80	C	73 C	74 C
55-68	D		
39-54	E		
21-38	F		
1-20	G		

ENTRANCE

Composite door with glazed panel insert and window above. Tiled hallway. Double panel radiator.

LIVING ROOM

3.81m x 5.16m (12' 6" x 16' 11")

Bay window. Multi fuel stove with inset brick chamber. Tiled hearth. Wood effect tiled flooring. Double panel radiator. TV point.

KITCHEN DINING

3.81m x 5.05m (12' 6" x 16' 7")

Bespoke range of Ivory high and low level units with granite counter surfaces. One and half stainless sink and drainer with mixer tap. Integrated appliances to include NEFF dishwasher, Hotpoint eye level oven and grill and wine cooler. Space for fridge freezer. Generous peninsula island with seating complimented by granite and wood combination surface incorporating 5 ring gas hob and excellent storage. Tiled floor. French doors to patio.

DOWNSTAIRS WC

0.97m x 2.33m (3' 2" x 7' 8")

Dual flush WC. Pedestal style sink with mixer tap. Single panel radiator. Tiled floor. Part tiled walls. Window.

UTILITY ROOM

1.60m x 3.81m (5' 3" x 12' 6")

High and low level storage units. Stainless steel sink and drainer with mixer tap. Space for washing machine and tumble dryer. Tiled floor. Single panel radiator. Part glazed UPVC door to garage.

FIRST FLOOR

Hotpress.

MASTER BEDROOM

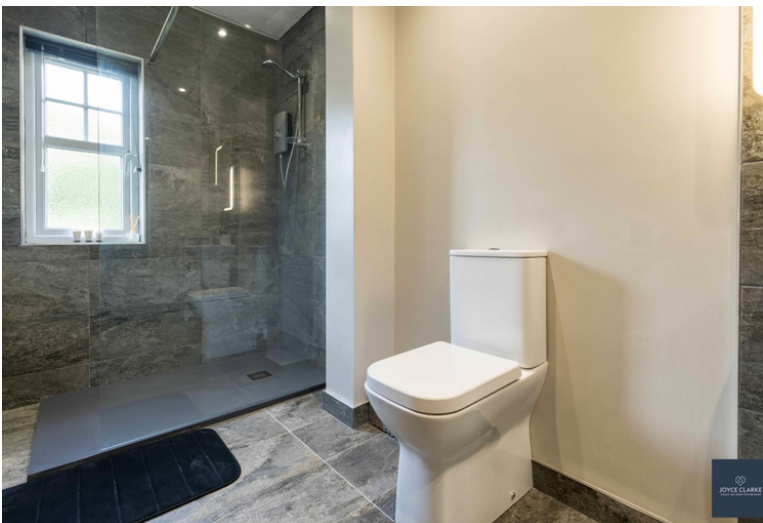
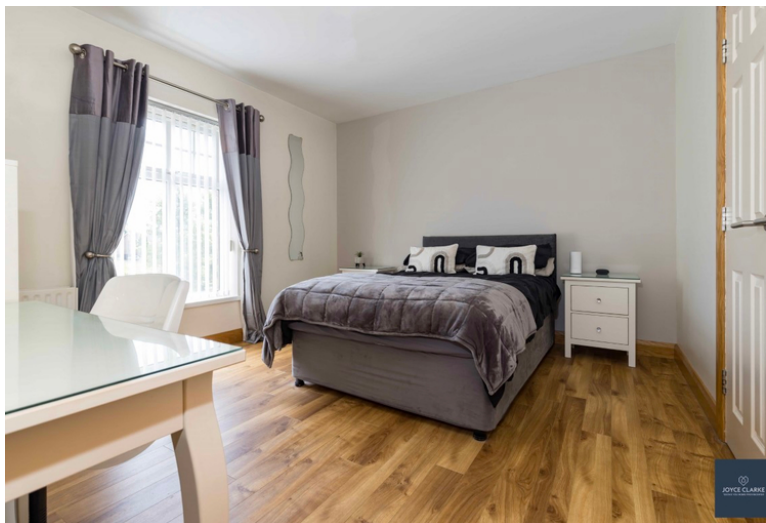
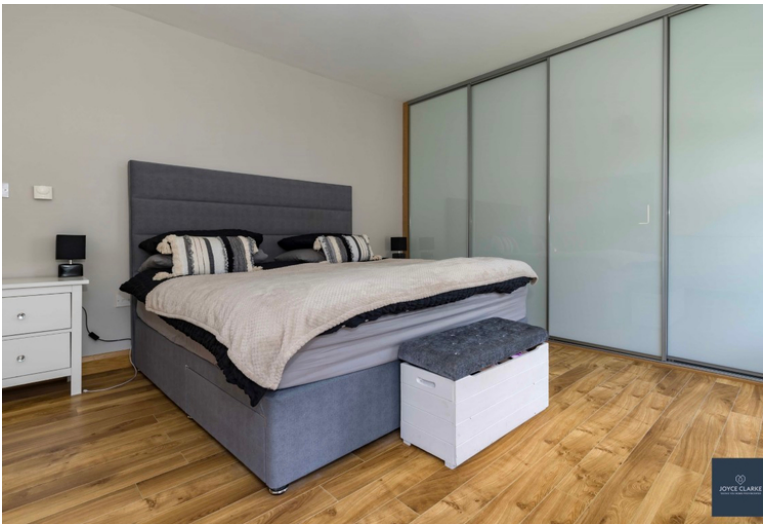
4.42m x 3.80m (14' 6" x 12' 6")

Rear aspect double bedroom. Built in bespoke wardrobes. Laminate flooring. Double panel radiator. Thermostat.

EN SUITE

1.59m x 3.79m (5' 3" x 12' 5")

Rimless walk in shower with electric power shower. Back to wall dual flush WC, floating sink with mixer tap. Graphite heated towel radiator. Tiled floor. Part tiled walls.



BATHROOM

Free standing roll tap bath with centre mixer tap and shower attachment. Mains fed shower. Floating sink with vanity unit. Dual flush WC. Tiled floor and walls. Recessed lighting. Window extractor.

BEDROOM TWO

3.52m x 3.79m (11' 7" x 12' 5")

Front aspect double bedroom. Built in storage closet. Laminate flooring. Double panel radiator.

SECOND FLOOR

Landing with reading area. Single panel radiator. Access to roof space.

BEDROOM THREE

3.37m x 3.92m (11' 1" x 12' 10")

Front aspect double bedroom. Laminate flooring. Single panel radiator.

BEDROOM FOUR

3.19m x 3.92m (10' 6" x 12' 10")

Rear aspect double bedroom. Laminate flooring. Single panel radiator.

SHOWER ROOM

2.41m x 2.74m (7' 11" x 9' 0")

Corner shower cubicle with MIRA sport electric shower. Pedestal sink, Dual WC. Tiled floor, part tiled walls. Single panel radiator. Window.

OUTSIDE

DETACHED GARAGE

3.04m x 5.38m (10' 0" x 17' 8")

Roller door. Pedestrian door. Side window. Power light.

FRONT

Tarmac driveway for multiple cars. Access gate to rear.

REAR

Fully enclosed garden laid in lawn with paved patio. Boiler. Oil tank. Outside tap



We endeavour to make our sales details accurate and reliable, however they should not be relied on as statements or representations of fact and they do not constitute any part of an offer or contract. The seller does not make any representation or give any warranty in relation to the property and we have no authority to do so on behalf of the seller. Any information given by us in these sales details or otherwise is given without responsibility on our part. Services, fittings and equipment referred to in the sales details have not been tested (unless otherwise stated) and no warranty can be given as to their condition. We strongly recommend that all information, which we provide, about the property is verified by yourself or your advisers. Site plans on brochures are not drawn to scale, however we are happy to provide scale drawings from our office. Artisat[™]'s impressions are for illustrative purposes only. All details including materials, finishes etc.