

THE MONTEITH

TOTAL FLOOR AREAS - TYPE A 1,095 ft² approx. / TYPE B 1,095 ft² approx.

Type A
Site: 131

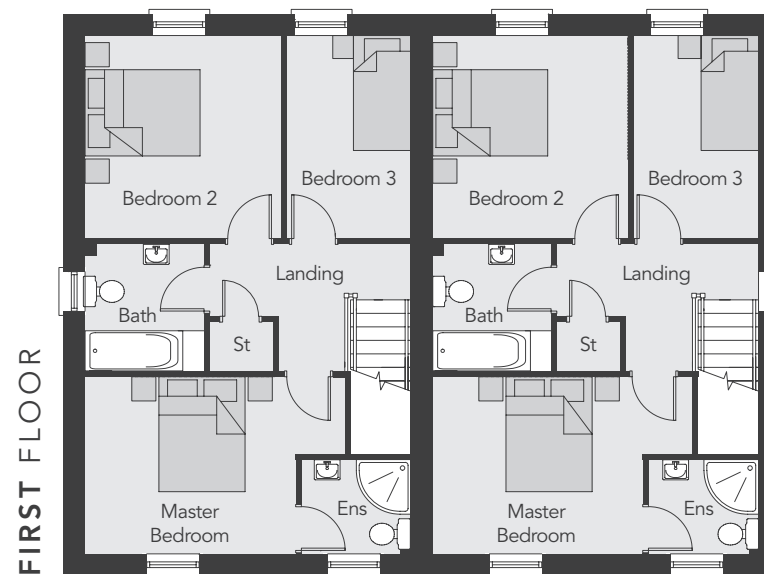
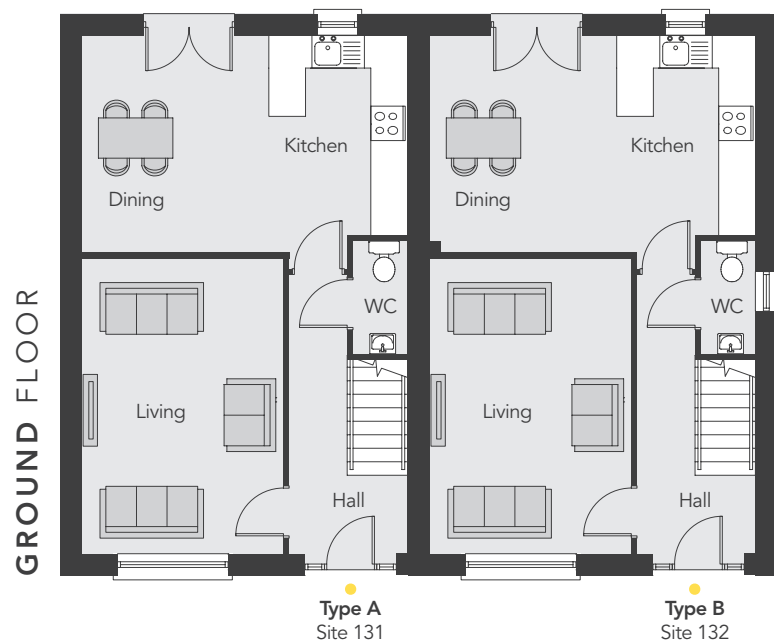
Type B
Site: 132



Computer visual.

THE MONTEITH

TOTAL FLOOR AREAS - TYPE A 1,095 ft² approx. / TYPE B 1,095 ft² approx.



TYPE A

GROUND FLOOR

Entrance Hall	
Living	12'2" x 11'6"
Kitchen/Dining (max)	18'7" x 12'4"
WC	6'5" x 3'1"

FIRST FLOOR

Master Bed (min)	12'0" x 10'1"
Ensuite	6'3" x 5'4"
Bedroom 2	11'7" x 11'1"
Bedroom 3	11'7" x 7'1"
Bathroom	7'2" x 6'9"

TYPE B

GROUND FLOOR

Entrance Hall	
Living	12'2" x 11'6"
Kitchen/Dining (max)	18'7" x 12'4"
WC	6'5" x 3'1"

FIRST FLOOR

Master Bed (min)	12'0" x 10'1"
Ensuite	6'3" x 5'4"
Bedroom 2	11'7" x 11'1"
Bedroom 3	11'7" x 7'1"
Bathroom	7'2" x 6'9"



Colliers New Homes
25 Talbot Street, Belfast BT1 2LD
Telephone 028 9024 4000
www.colliersni.com