



Computer Visual

The Cranston RS

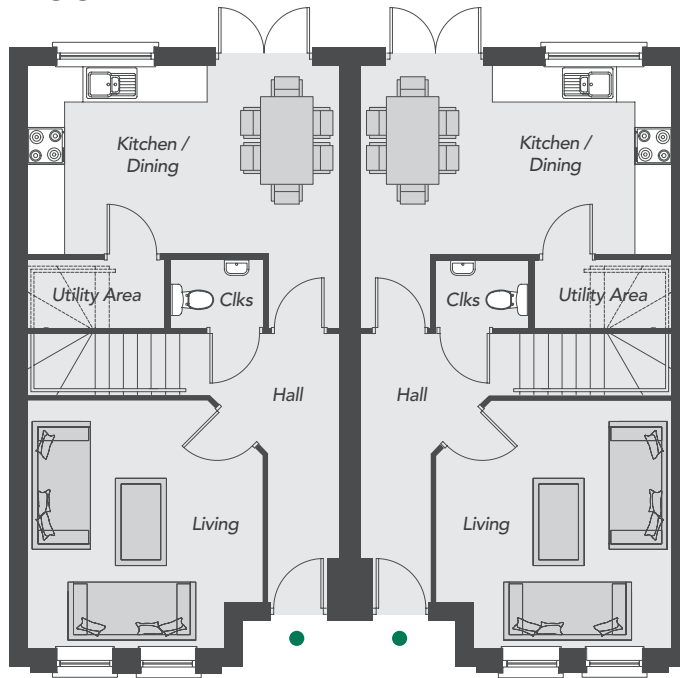
Total Floor Area: 1010 sq ft approx.



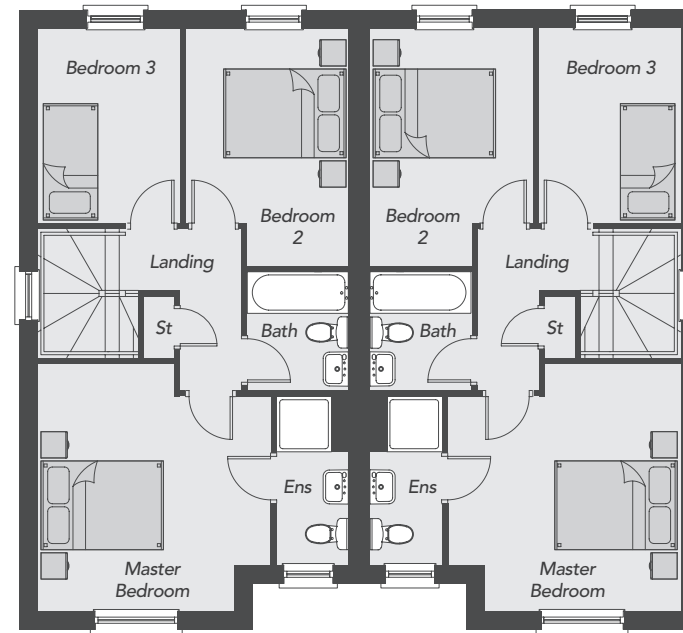
**Drumnagoon
Park**
DRUMNAGOON ROAD
CRAIGAVON

Visit us online at: www.drumnagoonpark.co.uk

GROUND FLOOR



FIRST FLOOR



The Cranston RS

GROUND FLOOR

Entrance Hall	
Living Max	13'3" x 12'6"
Kitchen/Dining Max	16'8" x 14'0"
Utility Area	7'3" x 3'7"
Cloakroom	4'11" x 3'7"

FIRST FLOOR

Master Bedroom Max	13'3" x 12'6"
Ensuite	9'0" x 3'10"
Bedroom 2 Max	12'8" x 8'8"
Bedroom 3	10'5" x 7'7"
Bathroom	6'4" x 5'4"

Total Floor Area
1010 sq ft approx.



All dimensions are approximate and 3D computer generated images are for illustration purposes only, both of which may be subject to change.