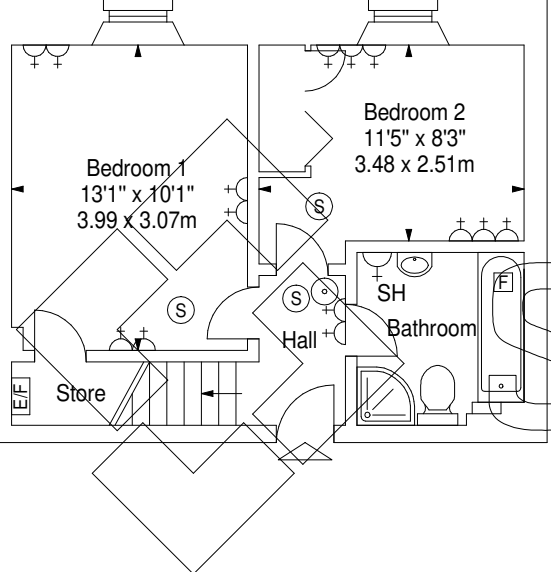
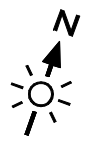


**20 F3 Easter Dalry Rigg,  
Edinburgh, EH11 2TL**

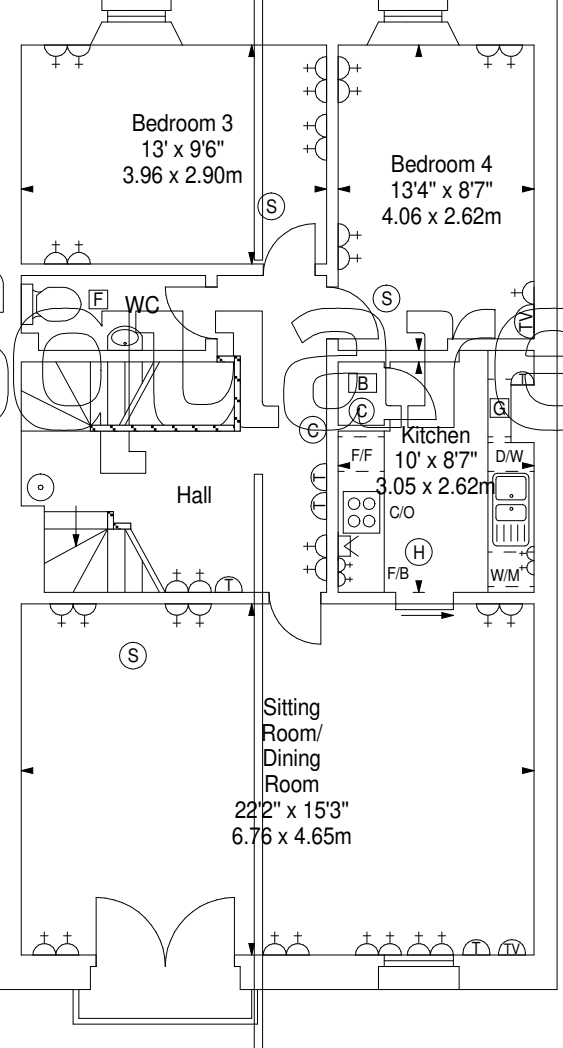


Approx. Gross Internal Area  
1569 Sq Ft - 145.76 Sq M  
For identification only. Not to scale.  
© SquareFoot 2022

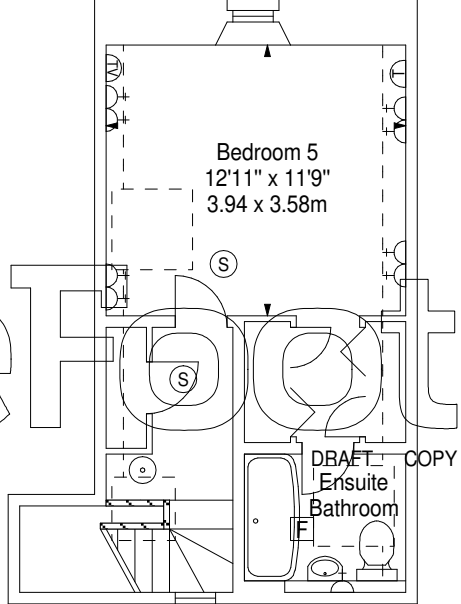
Lengths of : Sink 3'1"  
Hob 1'10"  
Kitchen Worktops : 17'8"  
Number of Sockets : 37  
Number of Cupboards : 10






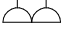



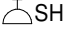



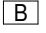

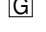

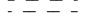






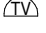
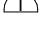
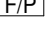
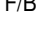
First Floor



Second Floor



Third Floor

- Key :-
- Spur For Low Level Socket - 
  - Low Level Single Socket - 
  - Single Socket - 
  - Double Socket - 
  - Triple Socket - 
  - Fourble Socket - 
  - Cooker Switch + Single Socket - 
  - Shaver Socket - 
  - Smoke Detector - 
  - Carbon Monoxide Detector - 
  - Heat Detector - 
  - Boiler - 
  - Electricity Fuseboard - 
  - Gas Mains Inlet - 
  - Extractor Fan - 
  - Extractor Fan Duct Routes - 
  - Fire Extinguisher - 
  - Dish Washer - 
  - Cooker/ Oven - 
  - Fridge/ Freezer - 
  - Tumble Dryer - 
  - Washing Machine - 
  - Television - 
  - Telephone - 
  - Fire Alarm Panel - 
  - Fire Blanket - 
  - Log Book & Fire Action Notice - 