



Excellent site of circa 0.25 of an acre bordered by mature trees and shrubs with planning permission for one 4 bed detached dwelling of approximately 1600 sq ft. Plans available on request.

- Excellent Site Of Circa 0.25 Of An Acre Bordered By Mature Trees & Shrubs
- Planning Permission For One 4 Bed Detached Dwelling of Approximately 1600 sq ft
- Plans Available On Request

Offers Over  
£89,950

Site @ 8 Dunmore  
Road, Spa,  
BALLYNAHINCH,  
BT24 8PR

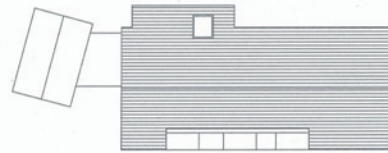
---

Viewing by  
appointment  
through agent  
028 9066 3030

8 Dunmore Road, Architects Plans for Additional Dwelling



LANE ELEVATION



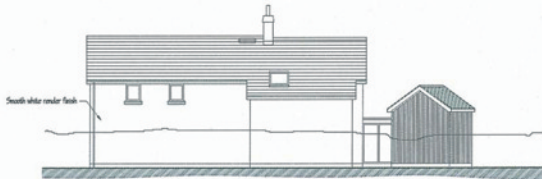
ROOF PLAN



SIDE GARDEN ELEVATION



FIRST FLOOR PLAN



SIDE ELEVATION



GROUND FLOOR PLAN



REAR GARDEN ELEVATION

0 2 4 6 8 10m

NOTEMAN MCKEE ARCHITECTS  
 Proposed Plans and Elevations  
 House at Dunmore Road Spa  
 1377/22A scale 1:300 date Oct 2020



LANE ELEVATION



ROOF PLAN



SIDE GARDEN ELEVATION



FIRST FLOOR PLAN



SIDE ELEVATION



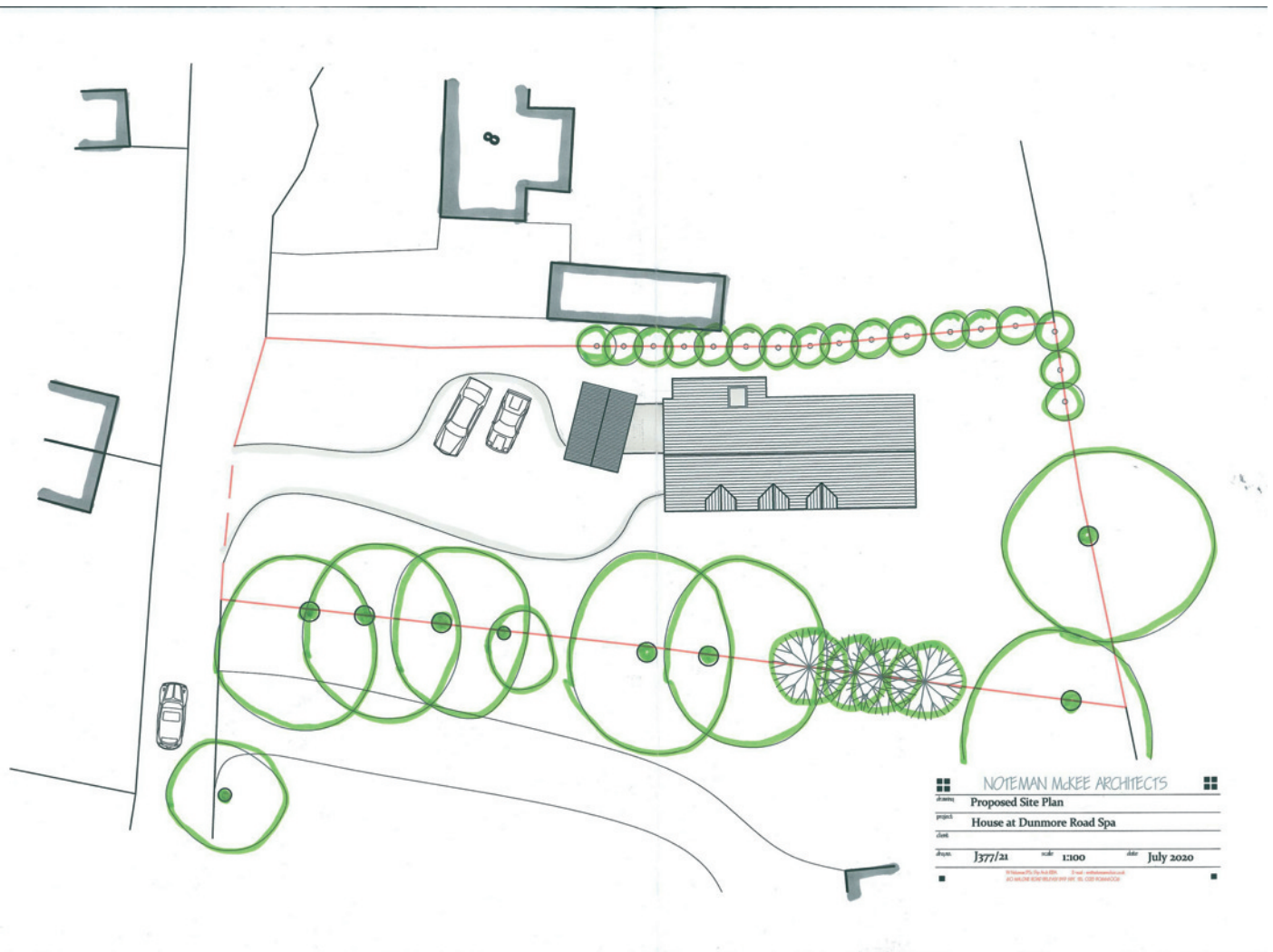
GROUND FLOOR PLAN



REAR GARDEN ELEVATION

0 2 4 6 8 10m

NOTEMAN MCKEE ARCHITECTS  
 Proposed Plans and Elevations  
 House at Dunmore Road Spa  
 Mr T. Corrie  
 1377/22A scale 1:300 date Oct 2020



Location:

Spa Road from Ballynahinch to crossroads with Grove Road on right hand side and Dunmore Road on the left hand side.

Lisburn Road - 028 90 66 3030  
Ballyhackamore - 028 90 65 0000  
Lisburn - 028 92 66 1700  
North Down - 028 90 42 4747  
[www.templetonrobinson.com](http://www.templetonrobinson.com)

These particulars do not constitute any part of an offer or contract. None of the statements contained in these particulars are to be relied on as statements or representations of fact and intending purchasers must satisfy themselves by inspection or otherwise to the correctness of each of the statements contained in these particulars. The Vendor does not make or give, neither Templeton Robinson, nor any person in its employment has any authority to make or give, any representation or warranty whatever in relation to this property. All dimensions are taken to nearest 3 inches.

