

22C WOODROW GARDENS

Saintfield Saintfield BT24
7WG

- Second Floor Apartment
- Beautifully Presented Throughout
- Living / Dining Room
- Fitted Kitchen
- Two Good Sized Bedrooms
- Master Bedroom with Ensuite
- Family Bathroom
- Popular and Convenient Location
- Walking Distance to Town's Amenities
- Secure Designated Parking

Energy Efficiency Rating		
	Current	Potential
Very energy efficient - lower running costs		
(92 plus) A		
(81-91) B		
(69-80) C		
(55-68) D		
(39-54) E		
(21-38) F		
(1-20) G		
Not energy efficient - higher running costs		
	78	79
Northern Ireland	EU Directive 2002/91/EC	

Offers Around £139,950

22c Woodrow Gardens

Saintfield, Saintfield, BT24 7WG



Entrance Hall

Front door into bright entrance hall with access to storage cupboard.

Living/Dining Room

11'4" x 21'4" (3.45m x 6.50m)
Bright and spacious living room with feature fireplace and space for dining with feature arched window and seated area with storage. Wooden laminate flooring.

Kitchen

10'4" x 8'7" (3.15m x 2.62m)
Range of high and low rise

units with stainless steel sink and drainer and tiled splash backs. Electric oven and hob with overhead extractor fan. Recess for fridge/freezer and washing machine. Integrated dishwasher. Tiled floor.

Bedroom One

11'3" x 13'0" (3.43m x 3.96m)
Fitted wardrobes with sliding doors. Juliet balcony. New bleach clean carpets.

En-suite

4'8" x 6'9" (1.42m x 2.06m)
White suite encompassing low

flush W/C, wash hand basin and shower. Tiled walls and floor.

Bedroom 2

9'7" x 12'4" (2.92m x 3.76m)
Fitted wardrobes with sliding doors. Storage cupboard. New bleach clean carpets.

Bathroom

White suite encompassing low flush W/C, wash hand basin and bath with tiled splash backs.

OUTSIDE

Gated designated parking.

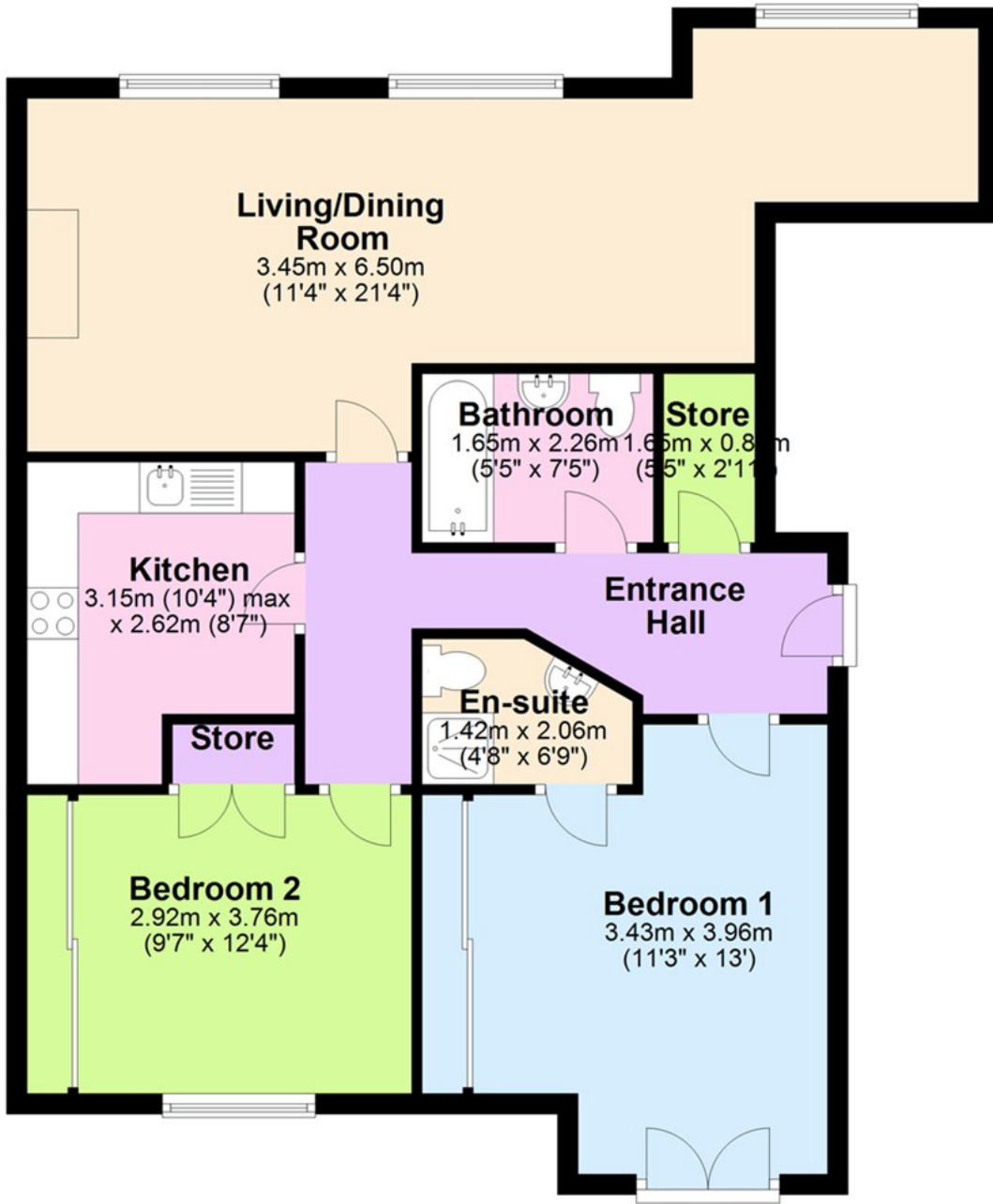


Directions

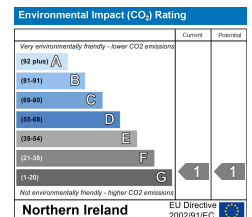
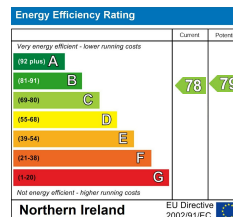


Floor Plan

Ground Floor



These particulars, whilst believed to be accurate are set out as a general outline only for guidance and do not constitute any part of an offer or contract. Intending purchasers should not rely on them as statements of representation of fact, but must satisfy themselves by inspection or otherwise as to their accuracy. No person in this firm's employment has the authority to make or give any representation or warranty in respect of the property.



ULSTERPROPERTYSALES.CO.UK

ANDERSONSTOWN
028 9060 5200

BALLYHACKAMORE
028 9047 1515

BALLYMENA
028 2565 7700

BALLYNAHINCH
028 9756 1155

BANGOR
028 9127 1185

CARRICKFERGUS
028 9336 5986

CAUSEWAY COAST
0800 644 4432

CAVEHILL
028 9072 9270

DOWNPATRICK
028 4461 4101

FORESTSIDE
028 9064 1264

GLENGORMLEY
028 9083 3295

MALONE
028 9066 1929

NEWTOWARDS
028 9181 1444

RENTAL DIVISION
028 9070 1000

