

102A HIGH STREET

Bangor BT20 5BB

- City Centre Ground floor Apartment
- Lounge
- 1 Bedroom
- Well Appointed Kitchen
- White Shower Room
- Gas Heating System
- Double Glazing
- Enclosed Rear Yard

Energy Efficiency Rating		
	Current	Potential
Very energy efficient - lower running costs		
(92 plus) A		
(81-91) B		
(69-80) C		
(55-68) D		
(39-54) E		
(21-38) F		
(1-20) G		
Not energy efficient - higher running costs		
Northern Ireland	69	71
EU Directive 2002/91/EC		

Offers Over £95,000

102A High Street , Bangor, BT20 5BB



COMMUNAL ENTRANCE HALL

Wooden double glazed window.

APARTMENT A

LOUNGE

13'10" into bay x 9'11" max (4.22m into bay x 3.02m max)
Wooden laminate flooring.
Double glazed windows. Ceiling downlights. Double panel radiator.

REAR HALL

Single panel radiator. Wooden laminate flooring.

BEDROOM 1

10'10" max x 7'7" max (3.30m max x 2.31m max)
Double glazed windows.
Double panel radiator.
Cupboard with wall mounted gas boiler.

KITCHEN

13'2" max x 7'5" max (4.01m max x 2.26m max)
High and low level units.
Extractor fan. Integrated 4 ring hob and oven. Plumbed for washing machine. Stainless steel sink unit with mixer taps.

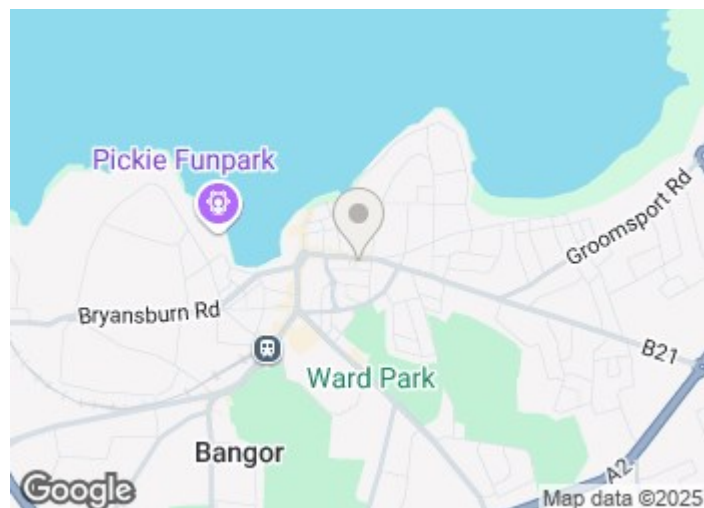
Double panel radiator. Double glazed windows and rear door.

SHOWER ROOM

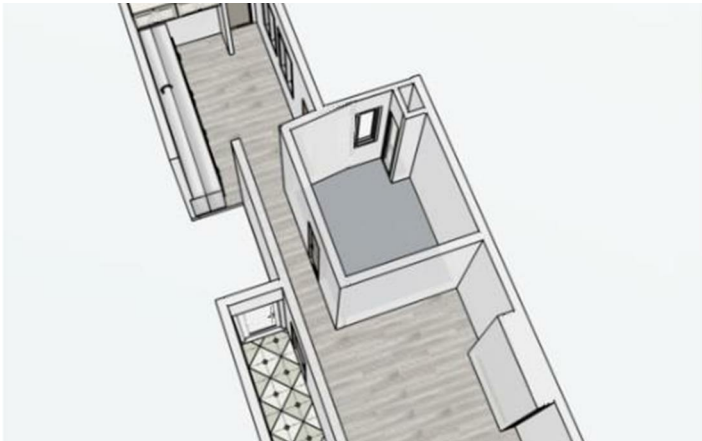
White suite comprising: Low flush W.C. Pedestal wash hand basin with mixer taps. Walk-in tiled shower with screen and shower. Single panel radiator.
Tiled floor. Double glazed window. Extractor fan.

GROUND FLOOR EPC

Certificate Number: 0161-2981-0485-9398-3075 (Current C69/Potential C71)



Directions



Floor Plan

These particulars, whilst believed to be accurate are set out as a general outline only for guidance and do not constitute any part of an offer or contract. Intending purchasers should not rely on them as statements of representation of fact, but must satisfy themselves by inspection or otherwise as to their accuracy. No person in this firms employment has the authority to make or give any representation or warranty in respect of the property.

