

# HMK

PROPERTY

Meadow Crescent  
Lisburn, BT28 3RN

Price £215,000



## *Meadow Crescent, Lisburn*

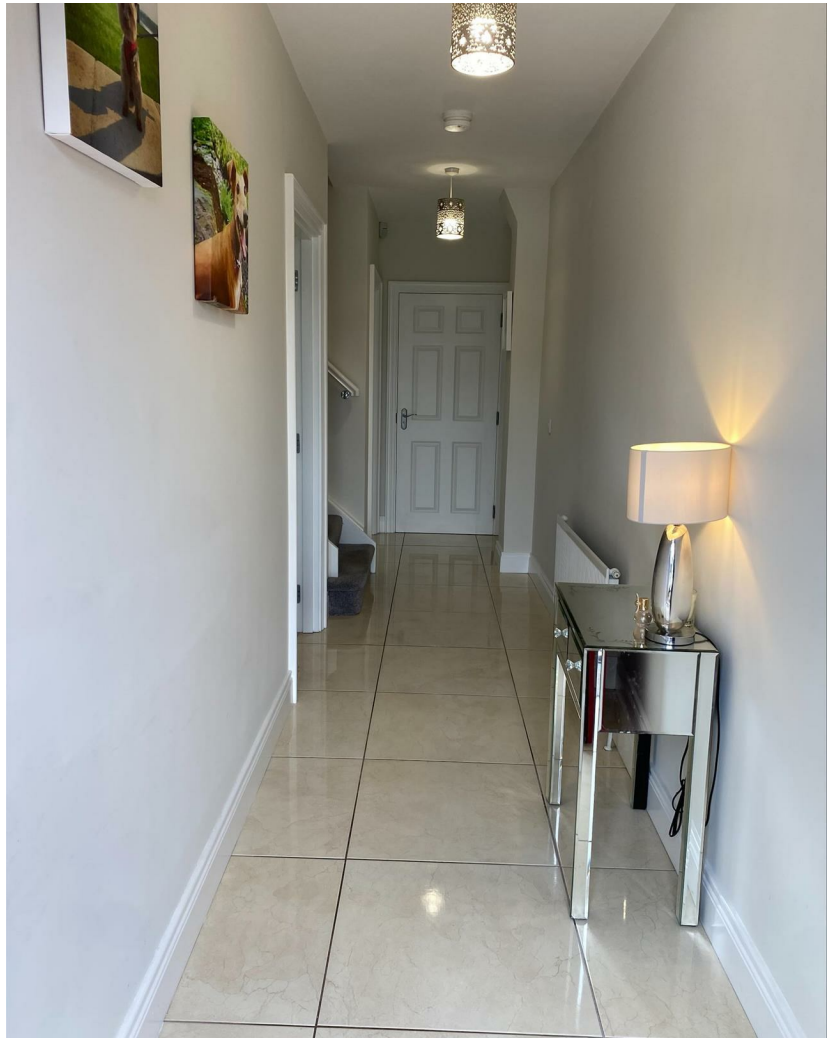
HMK Property is delighted to introduce No.15 Meadow Crescent to the sales market. Located in the popular Magheralave Meadows Development, Lisburn this beautiful 3 bed end townhouse will appeal to a range of buyers. On the ground floor No.15 consists of a cozy front living room with electric fire, and dual aspect uPVC windows. There is a spacious kitchen/diner with ample storage, integrated appliances, tiled floor and partially tiled walls, with direct access to a neat garden and patio area via uPVC double doors. The ground floor benefits from a useful downstairs W/C, housing a Worcester Gas Combi boiler and under stairs storage cupboard. On the first floor there are 3 spacious bedrooms, master with USB plug sockets, skirting and en-suite shower room along with a separate family bathroom. To arrange a viewing of 15 Meadow Crescent, contact HMK Property on 02890397712.



HMK Property 8 Grand Parade, Belfast, BT5 5HH

TEL: 02890397712









## *The facts you need to know...*

- A beautiful end townhouse in popular location
- A cozy living room with electric fire
- Downstairs W/C
- Two additional bedrooms both excellent sizes
- Gas central heating
- A spacious property with ample storage
- Good size kitchen/diner with direct access to rear garden
- Spacious master bedroom with stylish en-suite
- Contemporary family bathroom suite with additional storage
- Off street parking









*The property comprises...*

## **GROUND FLOOR**

### **ENTRANCE HALL**

A warm, welcoming entrance hall with tile flooring and skirting boards

### **LIVING ROOM**

13'8" x 11'7"

A cozy living room with luxurious carpet, skirting boards, electric fire with marble effect fireplace and surround along with dual aspect uPVC sash windows.

### **KITCHEN / DINING AREA**

16'2" x 12'0"

A large kitchen dining area with a stylish shaker style kitchen partially tiled walls, a 5 ring gas hob and oven under, stainless steel sink and drainer, durable laminate worktop and integrated fridge freezer, under stairs storage cupboard, and large PVC Patio doors with direct access to enclosed corner garden and patio area.







*The property comprises...*

#### **DOWNSTAIRS W/C**

A handy downstairs toilet, with pedestal sink, additional storage cupboard also housing a Worcester Gas Combi Boiler.

#### **FIRST FLOOR**

Carpeted landing leading to..

#### **MASTER BEDROOM**

12'1" x 9'10"

A large master bedroom with USB sockets, luxurious carpet, skirting, uPVC window with views overlooking the front of the property and communal green space.

#### **MASTER EN-SUITE**

A stylish modern en-suite with corner shower with drencher head, low flush w/c, pedestal sink, tile floor and partially tiled walls, with additional storage cupboard with shelving







## *The property comprises...*

### **BEDROOM TWO**

10'1" x 7'8"

A good size second bedroom/ guest room with luxurious carpet, skirting boards, and uPVC double glazed windows

### **BEDROOM THREE**

An excellent third bedroom, currently used as a dresser / home office. Carpet with skirting, and uPVC double glazed window.

### **FAMILY BATHROOM**

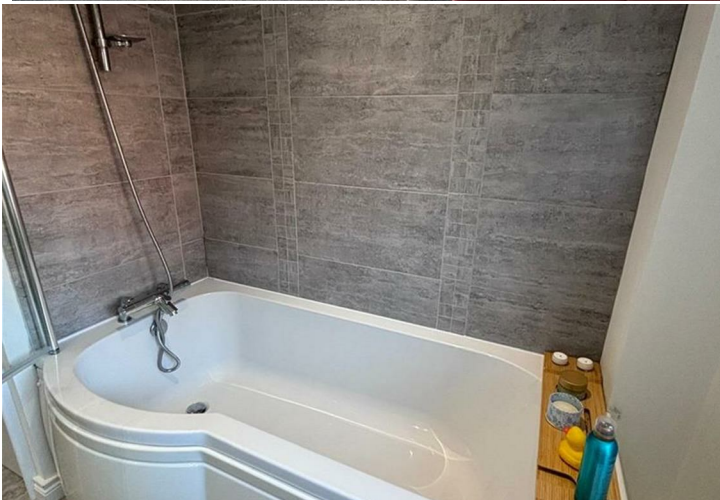
9'1" x 6'11"

A modern family bathroom with tile floor and partially tiled walls with bath and shower over with drencher shower head.

### **OUTSIDE**

To the front of the property there is space for 2 cars, along with on street parking. At the rear of the property there is a tidy enclosed garden laid in lawn with patio area.









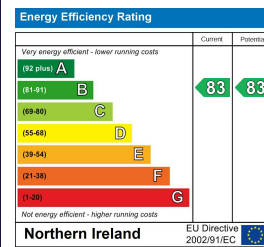




## Additional Information

No.15 Meadow Crescent conveniently located in a quiet residential development, popular with families, first-time buyers, and professionals alike, close to Lisburn City centre, Sprucefield Shopping Centre, and within walking distance from a host of local amenities. Given the quality of the finish throughout the property early viewing is advised. Contact HMK Property on 02890397712

### ENERGY EFFICIENCY RATING



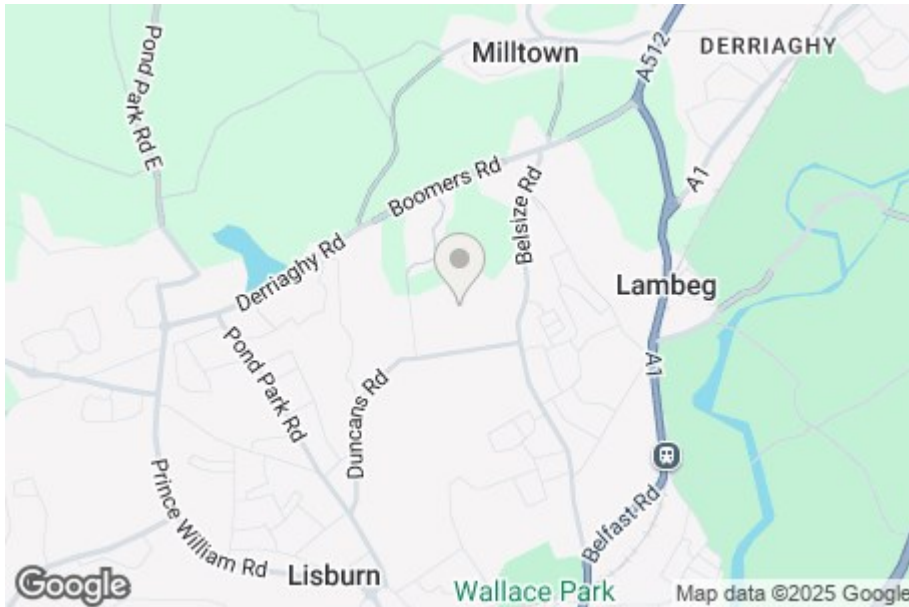
### VIEWING

By appointment with HMK Property



# Location

Turning onto the Magheralave Road from Bommers Road turn into the Magheralave Meadows Development. Follow the round to the end and turn right onto Meadow Crescent. No.15 is the end townhouse on the right hand side of the road.



**HMK Property - Sales - Lettings - Management - Mortgages**

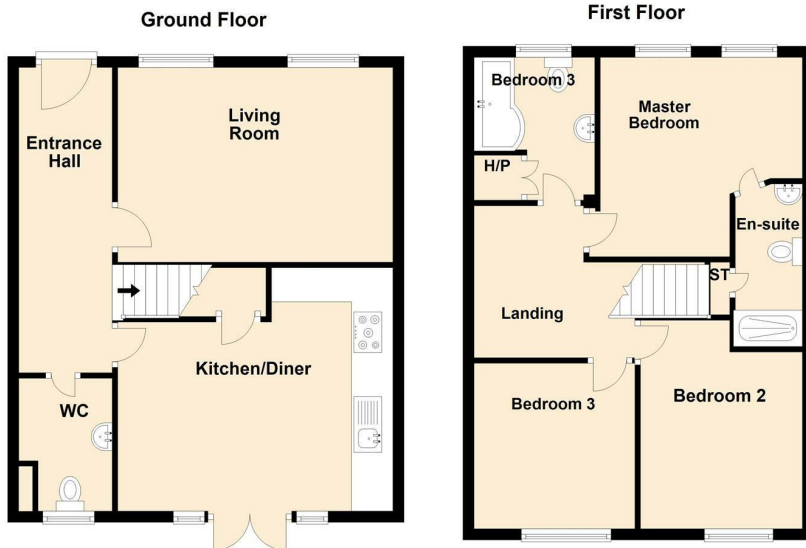
HMK Property  
8 Grand Parade  
Belfast  
BT5 5HH  
T: 02890397712  
E: info@hmkproperty.com

[www.hmkproperty.com](http://www.hmkproperty.com)

## Request a Free property valuation

Whether you're downsizing, need more space or simply a change of scenery. Whatever your reason for moving, HMK Property holds the key...

Contact HMK today for a free property valuation 02890397712



15 Meadow Crescent, Lisburn



## DISCLAIMER

HMK Property have endeavoured to prepare these sales particulars as accurately and reliably as possible for the guidance of intending purchasers or lessees. These particulars are given for general guidance only and do not constitute any part of an offer or contract. The seller and agents do not give any warranty in relation to the property. We would recommend that all information contained in this brochure is verified by yourself or your professional advisors. Services, fittings, and equipment referred to in the sales details have not been tested and no warranty is given to their condition. All measurements contained within this brochure are approximate.