



**Superbly Designed And Presented Two Bedroom Bungalow  
Ideal For Retired Persons Or First Time Buyers  
Convenient To Many Local Amenities**

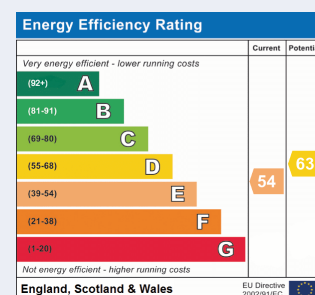


**2a Clanbrassil Drive, Portadown, Co Armagh BT63 5EH**

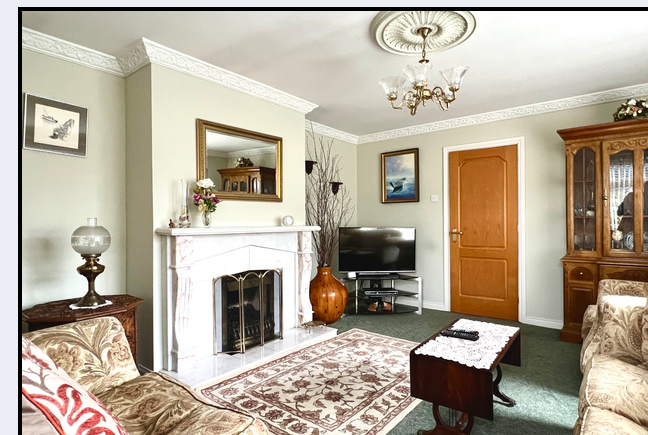
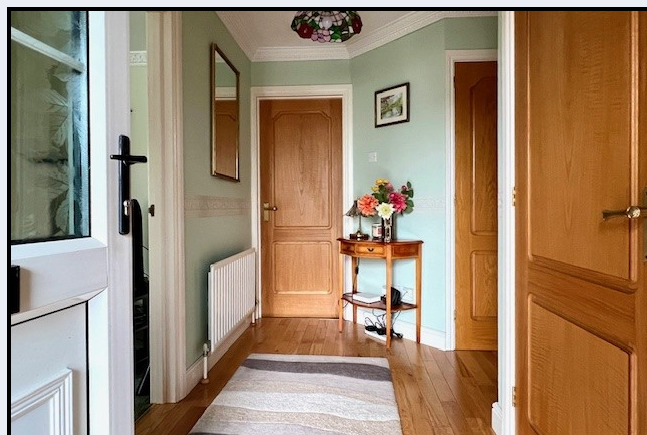
- Entrance hall with walk-in cloakroom
- Lounge with marble fireplace
- Solid oak kitchen with built-in appliances
- Dining area
- Utility room
- Sun room with patio doors
- Two bedrooms (master with en-suite)
- Bathroom with ivory coloured suite
- Pvc double glazed windows
- Oil fired heating
- Tarmac drive & parking area
- Front garden in lawn with shrub beds

**PRICE GUIDE £240,000**

These details do not constitute any part of an offer or contract. None of the statements contained in this sales brochure are to be relied on as statements or representations of fact and any intending purchaser must satisfy themselves by inspection or otherwise as to their correctness. The vendor does not make or give, and neither Alastair Stevenson the Property Spot nor any person in its employment has any authority to make or give any representation or warranty whatsoever in relation to this property. All dimensions are approximate and are taken at widest points







Superbly Designed And Presented Two Bedroom Bungalow

Ideal For Retired Persons Or First Time Buyers

Convenient To Many Local Amenities

#### Entrance Hall

10' 10" x 5' 0" (3.30m x 1.52m) PVC front door, solid oak floor

#### Cloaks Cupboard

8' 0" x 2' 7" (2.44m x 0.79m) Solid oak floor, walk in hot press

#### Lounge

16' 3" x 13' 8" (4.95m x 4.17m) Marble fireplace, real flame gas fire, ceiling corniced

#### Kitchen

19' 4" x 11' 0" (5.89m x 3.35m) Solid oak kitchen with high and low level units, solid composite worktop, display cabinets, built in oven, hob, extractor fan, fridge, freezer, dishwasher, 1½ bowl sink, partially tiled walls, tiled floor, dining area, door to sun room

#### Utility Room

9' 0" x 4' 8" (2.74m x 1.42m) High & low level units, stainless steel sink, plumbed for washing machine, stainless steel sink, partially tiled walls, tiled floor

#### Sun Room

18' 0" x 9' 9" (5.49m x 2.97m) Ornamental fireplace, wood panelled ceiling, tiled floor, patio doors

#### Bedroom 1

13' 8" x 13' 0" (4.17m x 3.96m) Built in unit comprising wardrobes, drawers and high level units, built in wardrobe

#### En-suite

9' 7" x 4' 0" (2.92m x 1.22m) Large walk-in shower, wash hand basin with vanity unit, w.c., panelled walls, tiled floor

#### Bedroom 2

11' 6" x 10' 0" (3.51m x 3.05m)

#### Bathroom

8' 0" x 7' 8" (2.44m x 2.34m) Ivory coloured suite comprising panelled bath with shower, wash hand shower, wash hand basin, w.c., fully tiled walls, tiled floor

#### Outside

Wall at front with railings on top, gates leading to tarmac drive and parking area

Front garden laid in lawn with shrub beds, brick paved patio area

Enclosed rear garden with paved area at rear and lawn at side

Garden shed



THE PROPERTY SPOT®

83 Armagh Road, Portadown BT62 3DN T: 028 3833 9700

www.thepropertyspot.co.uk