

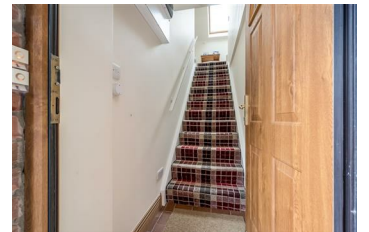


Apartment 1, 16 Lisnataylor Road, Nutts Corner, BT29

~~£750~~ Per Month



Immaculately presented, furnished, one bedroom, first floor apartment, conveniently situated on the tranquil and beautifully landscaped grounds of 16 Lisnataylor Road, Nutts Corner, providing easy access to main commuter networks. The property comprises communal entrance hall with stairwell leading to first floor landing, private entrance hall with twin built in stores and dining/office recess, open plan living / kitchen / dining with modern fitted kitchen, double bedroom, and shower room with white three piece suite. The property further benefits from gated private driveway leading to a designated car parking space, access to communal utility room encompassing automatic washing machine, and access to landscaped gardens surrounding the property. Other attributes include oil fired central heating and PVC double glazing. Early viewing highly recommended to avoid disappointment.



INVESTORS IN PEOPLE
We invest in people Gold

PRS Property Redress Scheme

Proudly sponsoring



WE ARE MACMILLAN
CANCER SUPPORT

Awards

