



3 MOUNT EAGLES GROVE, BELFAST, BT17 0GH



A superior well maintained and presented substantial detached family home that extends to 1609 sq / ft of excellent well appointed living space, that enjoys a mature, private elevated cul de sac position with an open aspect to front. Four good bright double bedrooms, principle bedroom with ensuite shower room. Lounge open to dining area, further extended family room. Fitted kitchen with casual dining area and double patio doors. Separate utility room. Upvc double glazed windows / gas fired central heating system. White bathroom suite with separate shower cubicle. Downstairs cloakroom / w.c. Private rear gardens.

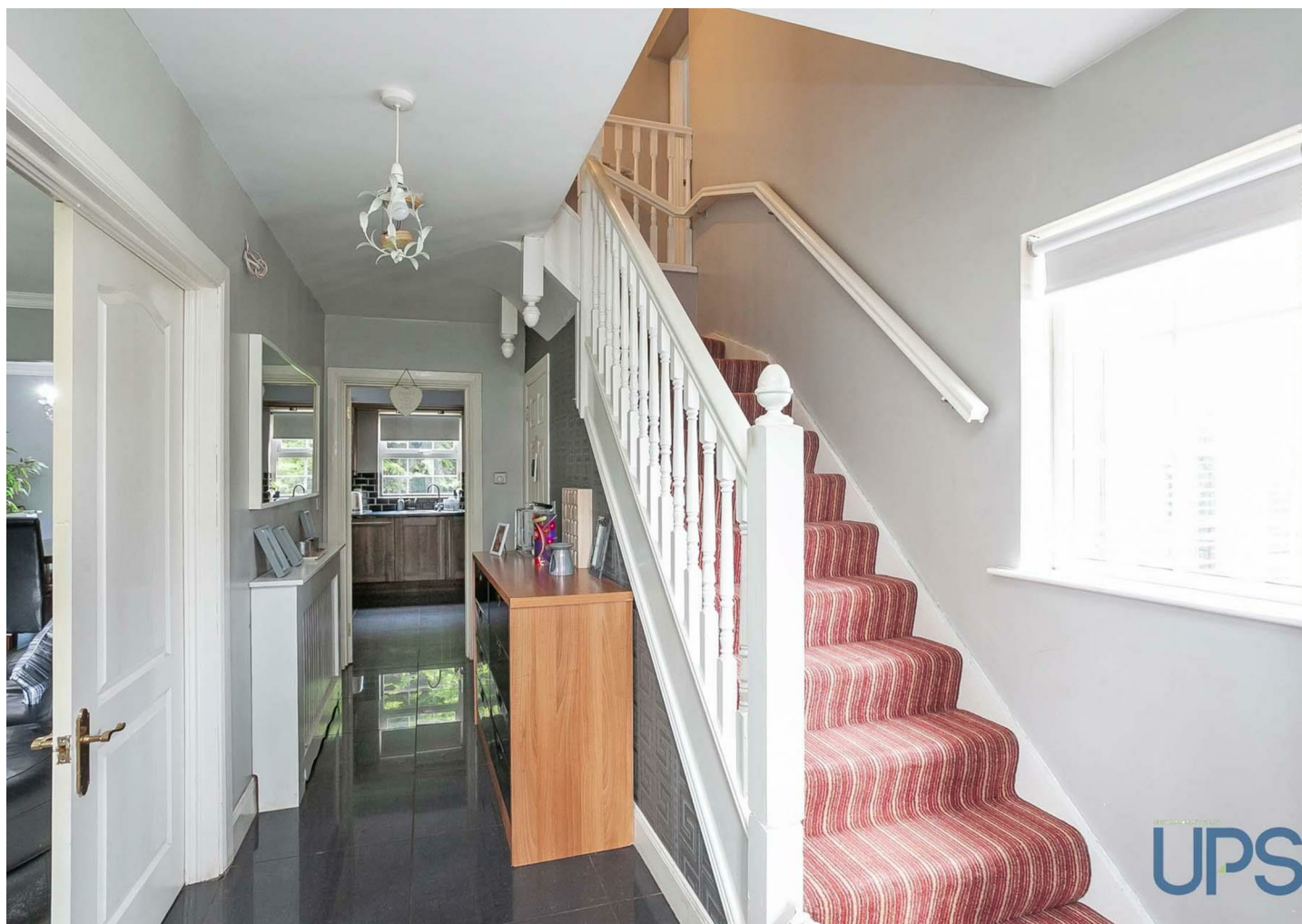
Energy Efficiency Rating		Current	Potential
Very energy efficient - lower running costs			
(92 plus) A			
(81-91) B		79	79
(69-80) C			
(55-68) D			
(39-54) E			
(21-38) F			
(1-20) G			
Not energy efficient - higher running costs			
Northern Ireland EU Directive 2002/91/EC			

OFFERS AROUND £230,000

3 MOUNT EAGLES GROVE, BELFAST, BT17 0GH

Key Features

- Superior well maintained and presented substantial detached family home.
- Principle bedroom with Ensuite shower room.
- Fitted kitchen with casual dining area / patio doors / Separate utility room.
- Gas central heating system.
- Private rear gardens.
- Four good, well appointed, bright double bedrooms.
- Lounge open to dining area, further extended family room.
- Upvc double glazing.
- White bathroom suite with separate shower cubicle.
- Popular residential cul de sac / well worth a visit.





GROUND FLOOR

ENTRANCE HALL

Feature flooring, double doors to:
Downstairs w.c.

LOUNGE

16 x 12
Feature flooring, Archway to;

LUXURY KITCHEN / DINING AREA

20.1 x 11.5
Range of high and low level units,
breakfast bar, work tops, overhead
extractor hood, tiling, feature
flooring, sink unit, downlighters,
Upvc double glazed double patio
doors.
Separate Utility room, plumbed for
washing machine.

FAMILY ROOM

15.8 x 10.6
Feature flooring

FIRST FLOOR

PRINCIPLE BEDROOM 1

15.3 x 10.6

ENSUITE SHOWER ROOM

Feature tiled shower cubicle, low
flush wc, wash hand basin.

BEDROOM 2

12.2 x 12.6

BEDROOM 3

11.9 x 11.5

BEDROOM 4

7.7 x 6.0

WHITE BATHROOM SUITE

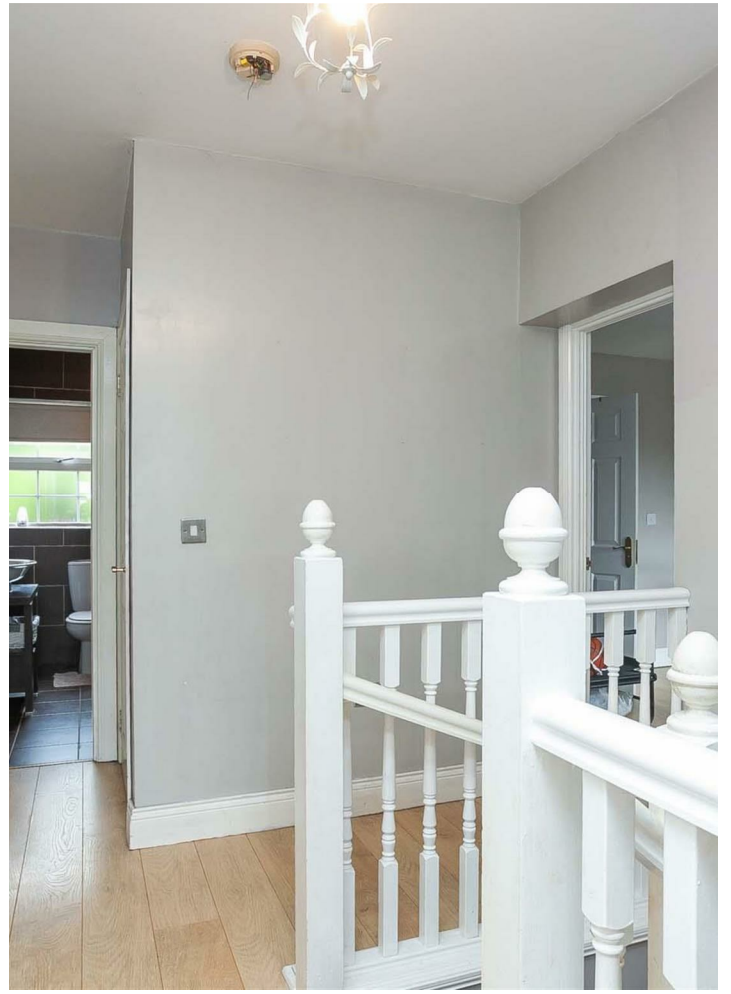
Bath, wash hand basin, low flush w.c,
shower cubicle, tiling and feature
flooring.

OUTSIDE

Private, rear south facing gardens in
lawns, driveway, car parking to front.

3 MOUNT EAGLES GROVE, BELFAST, BT17 0GH









3 MOUNT EAGLES GROVE, BELFAST, BT17 0GH



Questions you may have.

Which mortgage would suit me best?
How much deposit will I need?
What are my monthly repayments going to be?

To answer these and other mortgage related questions contact Andersonstown on .

Your home may be repossessed if you do not keep up repayments on your mortgage.

We DO NOT charge for initial mortgage consultations. We may charge a fee on completion depending on circumstances. Our typical fee is £250, however, please confirm with Mortgage Consultant at time of appointment. 17906709

Please note that we have not tested the services or systems in this property. Purchasers should make/commission their own inspections if they feel it is necessary.

ULSTERPROPERTYSALES.CO.UK

ANDERSONSTOWN
028 9060 5200

BALLYHACKAMORE
028 9047 1515

BALLYMENA
028 2565 7700

BALLYNAHINCH
028 9756 1155

BANGOR
028 9127 1185

CARRICKFERGUS
028 9336 5986

CAUSEWAY COAST
0800 644 4432

CAVEHILL
028 9072 9270

DOWNPATRICK
028 4461 4101

FORESTSIDE
028 9064 1264

GLENGORMLEY
028 9083 3295

MALONE
028 9066 1929

NEWTOWNARDS
028 9181 1444

RENTAL DIVISION
028 9070 1000



Conor Beirne trading under licence as Ulster Property Sales (Andersonstown)
 ©Ulster Property Sales is a Registered Trademark