



Bond
Oxborough
Phillips

Changing Lifestyles

105 Pendeen Crescent

Plymouth

PL6 6RG



Guide Price - £230,000

105 Pendeen Crescent

Plymouth



Welcome to 105 Pendeen Crescent, a rare gem in today's property market, boasting a remarkable history of ownership by its current vendor for approximately six decades. Now, this cherished property is ready to embrace its new chapter, presenting a unique opportunity for prospective buyers. Situated in a sought-after location, this home is offered for sale with no onward chain, providing a seamless transition for its next occupants.

Upon entering, you'll immediately sense the immense potential this property holds. The ground floor features generously proportioned living spaces, offering flexibility for customisation to suit the preferences of the new owner. Whether you envision an open-plan layout or desire to redefine the existing configuration, the possibilities are endless.

Ascending to the upper level, you'll discover three well-appointed bedrooms, providing comfortable accommodation for residents. Adjacent is a family bathroom, conveniently complemented by a separate W.C., ensuring practicality and convenience for daily routines.

Distinguishing itself from other properties in the area, 105 Pendeen Crescent enjoys a tranquil setting, set back from the road, affording peace and quiet amidst a spacious plot. With ample room for expansion, including the potential for a side extension (subject to planning permission), this residence offers scope for further enhancement, allowing buyers to realise their vision for their dream home.

Outside, the property is enveloped by well-maintained, mature gardens both at the front and rear, providing a verdant sanctuary and a sense of privacy. The lush greenery creates a serene backdrop for outdoor enjoyment and relaxation, perfect for entertaining guests or simply unwinding in nature's embrace.

In summary, 105 Pendeen Crescent presents an exciting prospect for those seeking a property brimming with character, history, and potential. We invite you to seize this opportunity and schedule a viewing today to experience the charm and endless possibilities this home has to offer. Don't miss out on the chance to make this your own slice of paradise.

- Large Plot Size
- Popular Location
- Three Bedrooms
- Large Garden
- Huge Potential
- No Onward Chain
- EPC - tbc

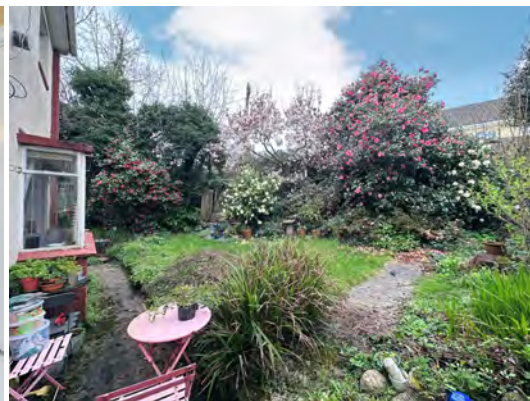


Changing Lifestyles

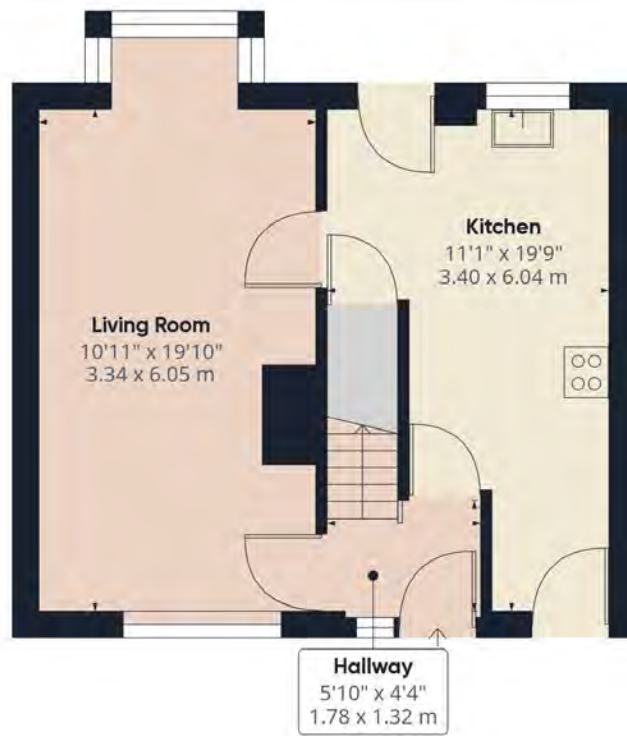
This friendly/active and unspoilt village is centred around its traditional square which benefits from a Post Office/Shop, popular Inn, a Primary School, and even a bus service to Bideford and Okehampton.

The village itself lies amidst lovely countryside in the centre of a triangle roughly bordered by the towns of Holsworthy/Hatherleigh/Okehampton and the A30.

Between them these offer an excellent range of local and national shops, professional services, leisure amenities, and schools. From Okehampton Town, the A30 provides a dual carriageway access to the Cathedral and University City of Exeter with its motorway and intercity rail links.



Please do not hesitate to contact
the team at
Bond Oxborough Phillips
Sales & Lettings on
01752 717 717
for more information or to
arrange an accompanied viewing
on this property.



Floor 0



Floor 1

Have a property to sell or let?

If you are considering selling or letting your home, get in contact with us today on 01822 600700 to speak with one of our expert team who will be able to provide you with a free valuation of your home.

We have the facility to refer purchasers and vendors to conveyancing, mortgage advisors and Surveyors. It is your decision if you choose to deal with any of these companies however should you choose to use them we would receive a referral fee from them for recommending you. We will receive a referral fee between £50 - £300 depending on the company & individual circumstances. We have carefully selected these associates for the quality of their work and customer service levels.

Consumer Protection Regulations: We have not tested any apparatus, equipment, fixtures and fittings or services and so cannot verify that they are in working order or fit for the purpose. References to the Tenure of a Property are based on information supplied by the seller. We have not had sight of the Title Documents. A buyer is advised to obtain verification from their solicitor or surveyor. Floorplans shown are for guidance only and should not be relied upon. Items shown in photographs are NOT included unless specifically mentioned within these details. They may however be able by separate negotiation. You are advised to check the availability of this property before travelling any distance to view. Particulars are produced in good faith to the best of our knowledge and are set out as a general guide only.