



  
Raymond  
Potterton

2 Cois Glaisin Court Johnstown Navan Co. Meath C15 TFF1

€349,950

BER A3







Raymond Potterton & Co. proudly present this stunning home to the market. This property has been expertly finished throughout both internally and externally.




# 2 Cois Glaisin Court Johnstown Navan Co. Meath

## C15 TFF1

 1076.00 sq ft

 3 Bedrooms

 3 Bathrooms

### INTRODUCTION

This property is nicely situated near the entrance of the development and features bright & spacious living accommodation with dual aspect windows.

This ready to go home features a stunning maintenance free garden with a covered in decking area and garden shed.

The property would make an ideal home for first time buyers, trader uppers and investors alike. Cois Glaisin is excellently located in a great residential area within walking distance to Old Johnstown Village, Supervalu Johnstown, and Primary & Secondary Schools.

Transport links to Dublin are second to none been stones throw to the M3 Motorway with 25 min drive times to the M50 and the Nx Bus on your doorstep with a 24-hour service to the city centre.

This property is sure to be popular giving its stunning finishes and sheer quality on offer so early viewing is advised.

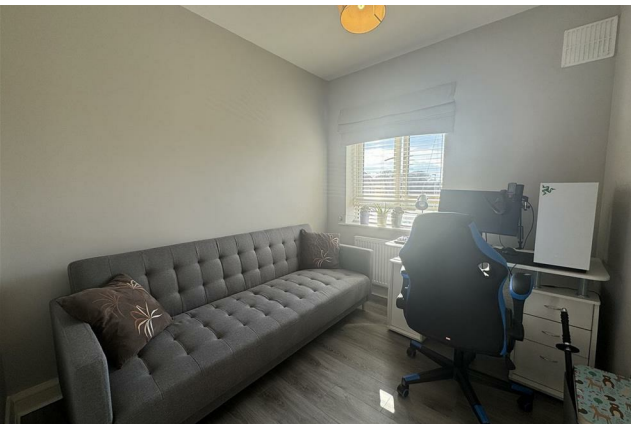
Accommodation includes Entrance Hall, Lounge, Kitchen / Dining Room, Guest W.C, 3 Bedrooms (Master Bedroom Ensuite) and Family Bathroom.

### FEATURES

- Showhouse condition
- A Rated Home
- Gas fired central heating
- Upgraded throughout
- Large maintenance free garden with a covered decking area.
- Cobble driveway
- 25 Minutes to M50







### **FIXTURES & FITTINGS**

All flooring, blinds, & light fittings and kitchen appliances are included in the sale.



## ACCOMODATION

### Entrance Hall

With wooden flooring.

### Lounge

19'2" x 12'2"

With wooden flooring.

### Kitchen/Dining

19'3" x 12'3"

With tiled flooring, built in wall to floor units, oven, hob and extractor fan.

### Guest W.C

5'2" x 4'7"

With tiled flooring, w.c and w.h.b.

### Landing

With carpet flooring.

### Bedroom 1

11'5" x 11'9"

With wooden flooring and built in wardrobes.

### Ensuite

6'6" x 6'6"

With tiled flooring, w.c, w.h.b and shower.

### Bedroom 2

11'7" x 10'1"

With wooden flooring and built in wardrobe.

### Bedroom 3

11'7" x 10'1"

With wooden flooring and built in wardrobes.

### Bathroom

6'10" x 5'10"

With tiled flooring, w.c, w.h.b and bath with shower.

## DIRECTIONS

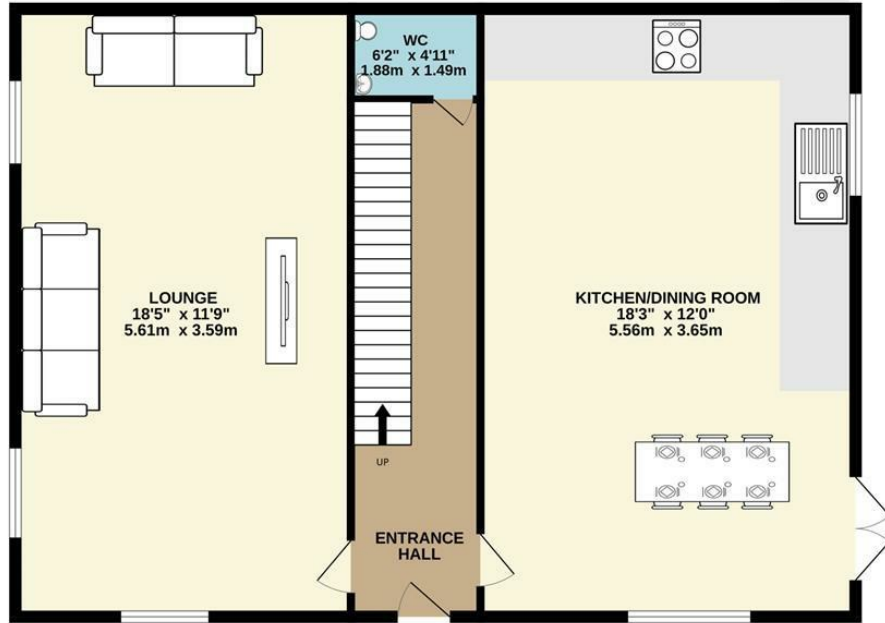
From Dublin take the M3 Motorway to Navan and exit at Junction 8 (Navan South). Continue to the roundabout and take the 2nd exit off. Travel to traffic lights and turn left (Metges Road). Continue straight and take the 2nd turn right into Cois Glaisin.

Eircode: C15 TFF1

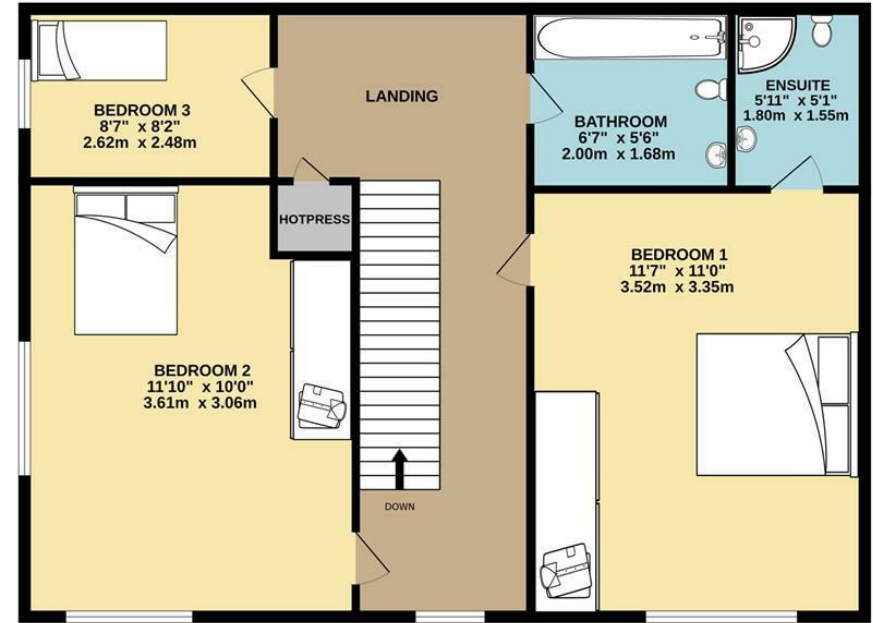


# FLOOR PLAN

GROUND FLOOR



1ST FLOOR



TOTAL FLOOR AREA : 1076sq.ft. (100.0 sq.m.) approx.

Whilst every attempt has been made to ensure the accuracy of the floorplan contained here, measurements of doors, windows, rooms and any other items are approximate and no responsibility is taken for any error, omission or mis-statement. This plan is for illustrative purposes only and should be used as such by any prospective purchaser. The services, systems and appliances shown have not been tested and no guarantee as to their operability or efficiency can be given.  
Made with Metropix ©2024

