

independent homes



we love the harbour area

28 portland street
larne

tel 028 28276060

www.independenthomes.eu



£59,950



Energy Efficiency Rating	
Current	Potential
Very energy efficient - lower running costs	
(92-100) A	
(81-91) B	
(69-80) C	
(55-68) D	
(39-54) E	
(21-38) F	
(1-20) G	
Not energy efficient - higher running costs	
53	69

Environmental Impact (CO ₂) Rating	
Current	Potential
Very environmentally friendly - lower CO ₂ emissions	
(92-100) A	
(81-91) B	
(69-80) C	
(55-68) D	
(39-54) E	
(21-38) F	
(1-20) G	
Not environmentally friendly - higher CO ₂ emissions	
41	56





An absolutely terrific home, so handy to schools, shopping, Larne harbour, leisure facilities, beach, promenade.... The list is endless.

Lets go inside...

ENTRANCE HALL

LOUNGE /DINING

Laminate flooring through to dining area.

18'1" x 12'5" (5.50m x 3.79m)

KITCHEN

Integrated oven and hob. Partial tiling .

10'0" x 7'5" (3.06m x 2.27)

BEDROOM

Bright and fresh.

10'4" x 9'7" (3.15m x 2.93m)

BEDROOM

10'1" x 9'9" (3.07m x 2.97m)

BATHROOM

White suite. Over bath shower.

7'1" x 6'7" (2.17m x 2.00m)

Partial tiling

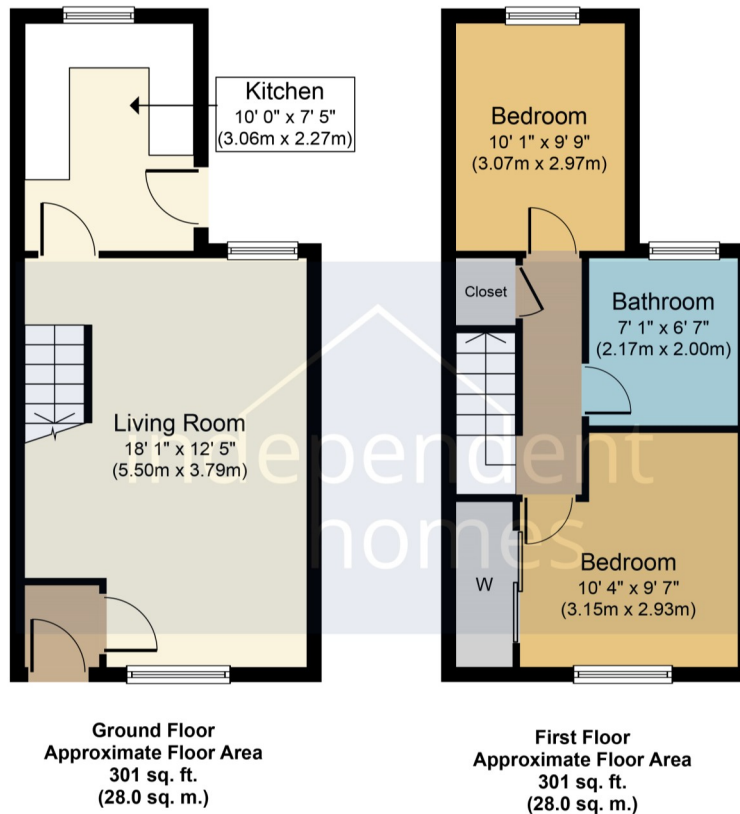
Oil Heating

Double Glazing

This is a terrific property, well maintained and cared for. It could be a lovely home or excellent investment property. So handy to Larne Main Street, shopping and school.

Easy access to main transport route to Belfast, and of course Larne Harbour.

independent homes



Whilst every attempt has been made to ensure the accuracy of the floor plan contained here, measurements of doors, windows, rooms and any other items are approximate and no responsibility is taken for any error, omission, or mis-statement. This plan is for illustrative purposes only and should be used as such by any prospective purchaser or tenant. The services, systems and appliances shown have not been tested and no guarantee as to their operability or efficiency can be given.
Copyright V360 Ltd 2018 | www.houseviz.com

independent
homes

Keeping it simple

all your property, mortgage and financial solutions under one roof!

- Estate Agents
- Discounted Legal Package
- Property Management
- Rentals
- Mortgages
- Life Cover/Protection Insurance
- Referral Service for Pensions/Investments