

---

# THE HARWICKE

---

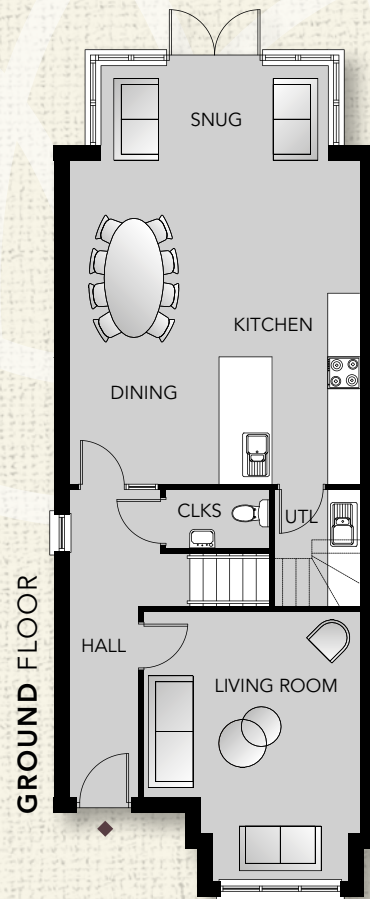


4 BEDROOM DETACHED HOME



SITE 5 // CIRCA. 1,990 SQ. FT. APPROX.

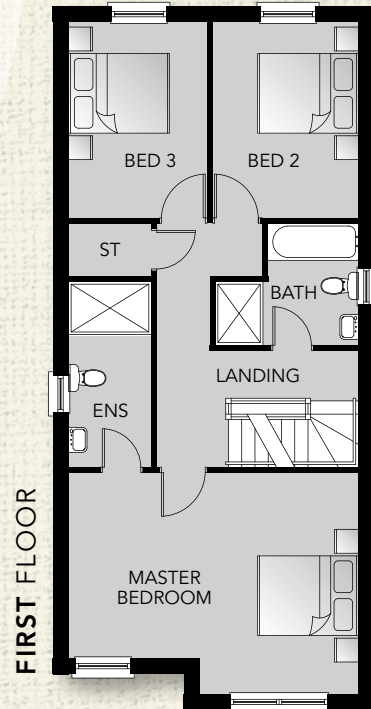
# THE HARWICKE



GROUND FLOOR

## GROUND FLOOR

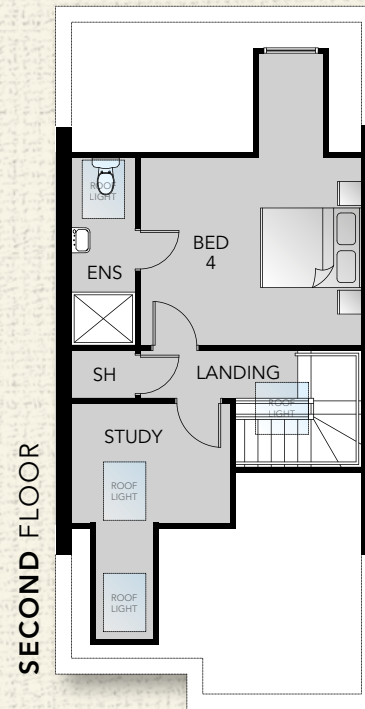
Entrance Hall	
Living <i>max</i>	16'7" x 13'4"
Kitchen/Dining	20'3" x 17'11"
Snug	14'0" x 5'10"
Utility Room	7'2" x 5'2"
WC	6'4" x 3'7"



FIRST FLOOR

## FIRST FLOOR

Master Bed <i>max</i>	17'11" x 13'8"
Ensuite	11'5" x 5'1"
Bedroom 2	12'1" x 9'0"
Bedroom 3	12'1" x 8'6"
Bathroom	8'10" x 7'6"



SECOND FLOOR

## SECOND FLOOR

Bedroom 4	13'7" x 11'3"
Ensuite	11'7" x 3'11"
Study <i>min</i>	9'10" x 7'4"



THE HARWICKE  
SITE 5

THE DANESCROFT  
SITE 6



4 BEDROOM DETACHED HOME // SITE 5 // CIRCA. 1,990 SQ. FT. APPROX.

Computer Visual





SELLING AGENT



Unit 6, Orpen Shopping Centre,  
Upper Lisburn Road, Belfast

**028 9030 8855**

[www.douganproperty.com](http://www.douganproperty.com)

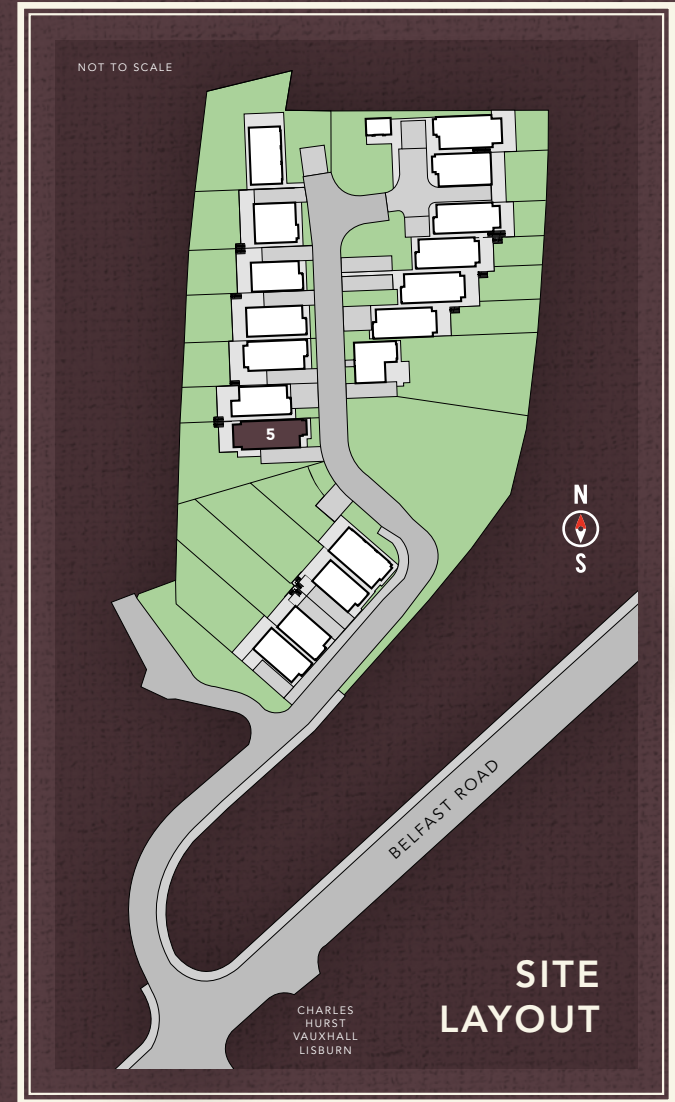


**glenoak**  
DEVELOPMENTS



@GlenoakDevelopments

[www.glenoakdevelopments.com](http://www.glenoakdevelopments.com)



In compliance with Consumer Protection from Unfair Trading and Business Protection from Misleading Marketing Regulations, please note that any visual or pictorial representations as featured in this brochure such as 3D computer generated images are purely intended as a guide for illustrative, concept purposes only and often may be subject to change. Any floor plans and site layouts used are not to scale and all dimensions are approximate and subject to change. Also note the brochure does not feature exact location or presence of specific or detailed items such as street lighting, sub stations or full finishes etc. All specific details to your chosen plot or immediate boundaries etc. should be checked with the agent, developer, or your legal advisor prior to purchase.

Copyright notice: All rights reserved. The contents of this brochure may not be reproduced, copied, redistributed, or otherwise made available in whole or part without the prior written consent from the developer.