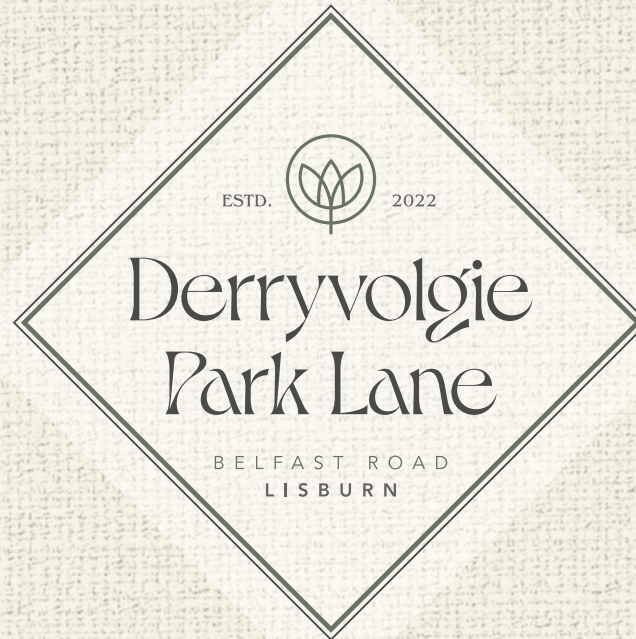

THE BERRYMEAD

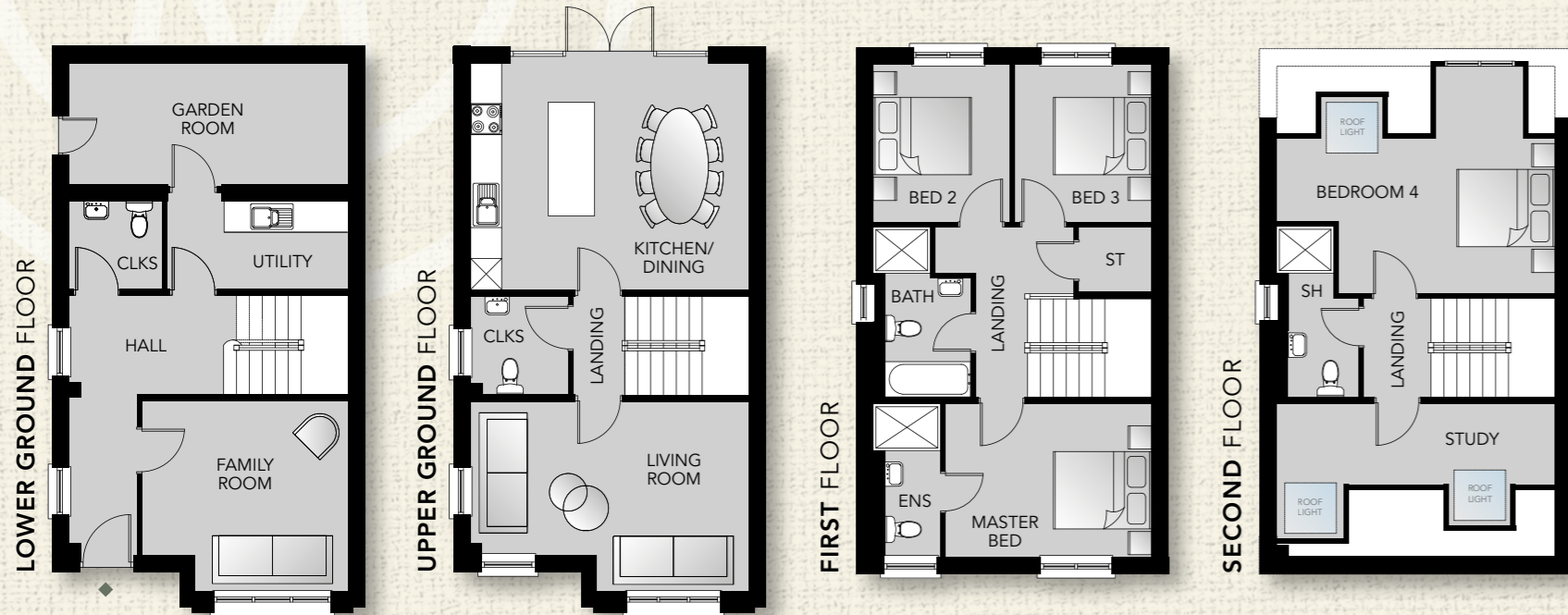


4 BEDROOM DETACHED HOME



SITE 3 // CIRCA. 2,000 SQ. FT. APPROX.

THE BERRYMEAD



LOWER GROUND FLOOR

Entrance Hall	
Family Room <i>max</i>	13'0" x 12'1"
Utility Room	11'5" x 5'6"
Cloakroom	5'10" x 5'6"
Garden Room	17'8" x 7'8"

UPPER GROUND FLOOR

Living <i>inc. bay</i>	17'8" x 12'1"
Kitchen/Dining	17'8" x 14'2"
Cloakroom	6'2" x 6'1"

FIRST FLOOR

Master Bed	13'0" x 9'9"
Ensuite	9'9" x 4'3"
Bedroom 2	9'10" x 8'8"
Bedroom 3	9'10" x 8'8"
Bathroom <i>max</i>	10'9" x 6'2"

SECOND FLOOR

Bedroom 4 <i>max</i>	17'8" x 11'9"
Study <i>min</i>	17'8" x 5'2"
Shower Room <i>max</i>	10'9" x 5'2"



THE BENTHAM
SITE 2

THE BERRYMEAD
SITE 3

4 BEDROOM DETACHED HOME // SITE 3 // CIRCA. 2,000 SQ FT APPROX.





SELLING AGENT



14-16 Market Street,
Lisburn BT28 1AB

028 9267 5321
www.reedsrains.co.uk

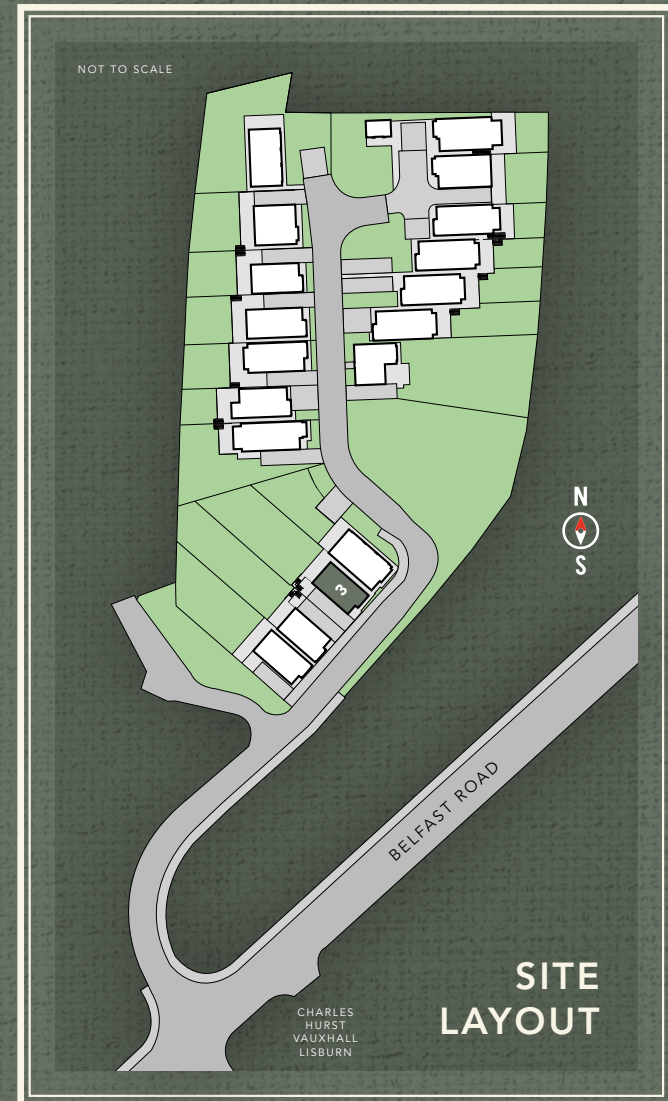


glenoak
DEVELOPMENTS



@GlenoakDevelopments

www.glenoakdevelopments.com



In compliance with Consumer Protection from Unfair Trading and Business Protection from Misleading Marketing Regulations, please note that any visual or pictorial representations as featured in this brochure such as 3D computer generated images are purely intended as a guide for illustrative, concept purposes only and often may be subject to change. Any floor plans and site layouts used are not to scale and all dimensions are approximate and subject to change. Also note the brochure does not feature exact location or presence of specific or detailed items such as street lighting, sub stations or full finishes etc. All specific details to your chosen plot or immediate boundaries etc. should be checked with the agent, developer, or your legal advisor prior to purchase.

Copyright notice: All rights reserved. The contents of this brochure may not be reproduced, copied, redistributed, or otherwise made available in whole or part without the prior written consent from the developer.