

648 Crumlin Road , Belfast, BT14 7GN

Offers Over £145,000

Handsome Extended Red Brick Semi Detached Villa With Private Gardens.

Holding a prime position within this ever popular and sought after location this handsome extended red brick semi detached villa will have immediate appeal. The spacious interior comprises 3 bedrooms, through lounge into bay, extended fitted kitchen with excellent range of units and fully tiled bathroom suite with bath and separate shower cubicle. The dwelling further offers oil fired central heating, uPvc double glazed windows and doors and has been maintained to a high standard over the years.

While requiring improvements and modernisation this is a superb blank canvas for the family buyer, to put their own stamp, on this much loved family home - Early Viewing is recommended.

Energy Efficiency Rating		Current	Potential
Very energy efficient - lower running costs			
(92 plus)	A		
(81-91)	B		
(69-80)	C		
(55-68)	D		68
(39-54)	E		40
(21-38)	F		
(1-20)	G		
Not energy efficient - higher running costs			
Northern Ireland		EU Directive 2002/91/EC	

648 Crumlin Road

, Belfast, BT14 7GN



- Handsome Extended Red Brick Semi Detached Villa
- Fully Tiled Bathroom Suite
- Private Mature Gardens
- 3 Bedrooms, Through Lounge Into Bay
- Upvc Double Glazed Windows & Doors
- Requires Refurbishment
- Extended Fitted Kitchen
- Oil Fired Central Heating
- Superb Potential

Entrance Hall

Upvc front door, panelled radiator, understairs cloaks.

Through Lounge

27'5" x 9'10" into bay (8.38 x 3.01 into bay)
Panelled radiators x 5.

Extended Fitted Kitchen

15'9" x 6'11" (4.81 x 2.12)
Bowl and a half drainer stainless steel sink unit, excellent range of high and low level units, formica worktops, cooker space, fridge freezer space, plumbed for washing machine, partly tiled walls, ceramic tiled flooring,

double panelled radiator, recessed spotlights, Upvc door to rear.

First Floor

Feature picture window. Access to roofspace.

Bathroom

White suite comprising panelled bath with telephone handset shower, electric power shower, separate shower cubicle with electric shower, vanity unit, low flush wc, panelled radiator, tiled walls, ceramic tiled floor.

Bedroom

11'1" x 8'8" (3.38 x 2.66)
Built-in storage, panelled radiator.

Bedroom

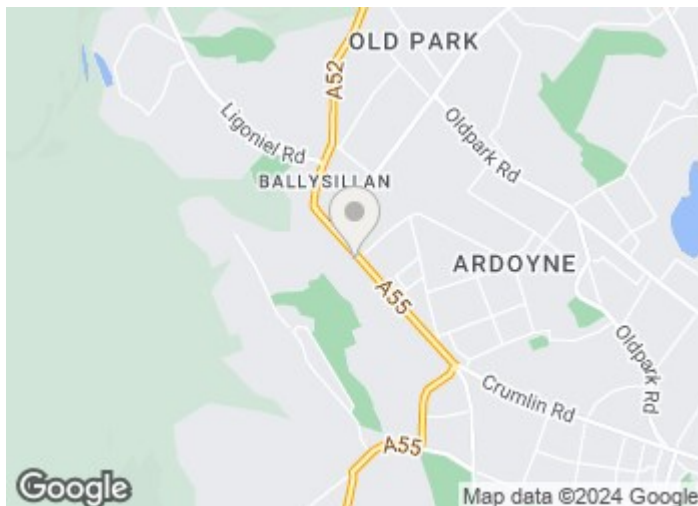
12'5" x 9'10" (3.80 x 3.00)
Built-in storage, double panelled radiator.

Bedroom

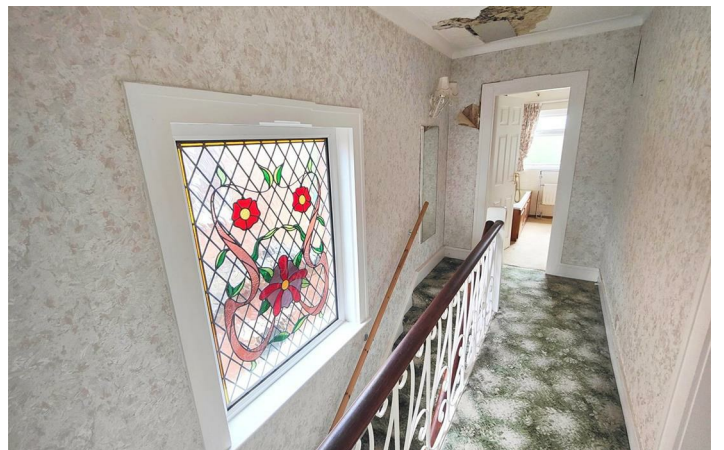
7'3" x 5'4" (2.21 x 1.65)
Panelled radiator.

Outside

Paved driveway via ornate entrance gates, mature lawn, external lighting. Private enclosed rear in patio and mature lawn, shrubs & hedging, outbuilding storage.

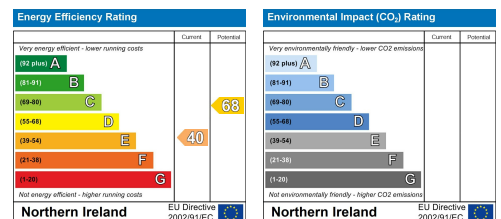


Directions



Floor Plan

These particulars, whilst believed to be accurate are set out as a general outline only for guidance and do not constitute any part of an offer or contract. Intending purchasers should not rely on them as statements of representation of fact, but must satisfy themselves by inspection or otherwise as to their accuracy. No person in this firm's employment has the authority to make or give any representation or warranty in respect of the property.



ULSTERPROPERTYSALES.CO.UK

ANDERSONSTOWN
028 9060 5200

BALLYNAHINCH
028 9756 1155

CAUSEWAY COAST
0800 644 4432

FORESTSIDE
028 9064 1264

NEWTOWNARDS
028 9181 1444

BALLYHACKAMORE
028 9047 1515

BANGOR
028 9127 1185

CAVEHILL
028 9072 9270

GLENGORMLEY
028 9083 3295

RENTAL DIVISION
028 9070 1000

BALLYMENA
028 2565 7700

CARRICKFERGUS
028 9336 5986

DOWNPATRICK
028 4461 4101

MALONE
028 9066 1929



John McLarnon trading under licence as Ulster Property Sales (Cavehill)
©Ulster Property Sales is a Registered Trademark