

Tim Martin
— .co.uk



**4 Barnett Cottages
Comber
BT23 6DX**

**Offers Around
£179,950**

www.timmartin.co.uk
Telephone 028 91 878956

SUMMARY

Ideally located in the heart of Lisbane village, just yards from shops, post office, The Poacher's Pocket Delicatessen, Pub and Restaurant, this well presented town house is perfect for the first time buyer, young couple or family.

Boasting bright and spacious accommodation throughout, the property comprises of a beautifully appointed lounge with open fire, modern fitted kitchen with integrated appliances, utility room, three excellent sized bedrooms, one with an ensuite WC and the principle bedroom with an ensuite shower room and a family bathroom, fitted with a modern white suite.

Private, designated parking is situated to the rear of the property and there is a compact garden to the front of the property with an enclosed patio to the rear. The property is further enhanced by oil fired central heating, uPVC double glazing, fascia and soffit.

Set approximately equal distance between Comber and Killinchy, the property affords a convenient commute to Downpatrick, Newtownards and Belfast, whilst a range of local primary and secondary schools are easily accessible by a regular bus network from Lisbane village.

FEATURES

- Modern And Well Presented Townhouse In The Heart Of Lisbane Village
- Spacious Lounge With Open Fire
- Modern Fitted Kitchen With Integrated Appliances
- Utility Room
- Three Bedrooms (One With Ensuite WC And One With Ensuite Shower Room)
- Principle Bathroom With Modern White Suite
- Oil Fired Central Heating And uPVC Double Glazing, Fascia And Soffit
- Walking Distance To Filling Station, Post Office, Poachers Pocket Pub And Restaurant And Public Transport
- Convenient Commuting Distance To Downpatrick, Newtownards And Belfast

Entrance Hall

Upvc entrance door; tiled floor

Lounge

18'7 x 15'5 (max measurements) (5.66m x 4.70m (max measurements))

Beautiful sandstone fireplace with slate hearth; open fire; TV aerial connection point; telephone connection point; open through to:-

Kitchen

16'8 x 11'4 (5.08m x 3.45m)

Extensive range of modern wood laminate high and low level cupboards and drawers incorporating 1½ twin stainless steel sink unit with mixer taps; integrated 'Hotpoint' electric double oven with 'Hotpoint' 4 ring ceramic hob; extractor fan over; 'Kenwood' fridge/freezer; 'Beko' dishwasher; formica worktops; tiled splashback; tiled floor; recessed spotlights.

Utility Room

9'9 x 5'0 (2.97m x 1.52m)

Good range of wood laminate high and low level cupboards incorporating; single drain stainless steel sink unit with mixer taps; space and plumbing for washing machine and tumble dryer; formica worktops; tiled floor; glazed Upvc door to rear.

Bedroom 1

13'11 x 9'8 (4.24m x 2.95m)

Wood laminate floor

Ensuite WC

6'7 x 2'10 (2.01m x 0.86m)

Modern white suite comprising duel flush WC and pedestal wash hand basin with mono mixer taps; tiled floor.

First Floor / Landing

Access to roofspace; hot press with insulated copper cyclinder.

Principal Bedroom

22'1 x 17'9 (max measurements) (6.73m x 5.41m (max measurements))

Ensuite Shower Room

9'4 x 6'8 (max measuements) (2.84m x 2.03m (max measuements))

Modern white suite comprising separate shower cubicle with 'Mira Sport' electric shower unit and wall mounted wash hand basin; fitted sliding shower doors; duel flush WC; wall mounted wash hand basin with mono mixer taps and vanity unit under; part tiled walls; towel radiator; tiled floor recessed spotlights.

Bedroom 3

15'8 x 9'8 (4.78m x 2.95m)

Bathroom

7'9 x 6'8 (2.36m x 2.03m)

Modern white suite comprising panelled bath with mono mixer taps; semi pedestal wash hand basin; duel flush WC; part tiled walls; tiled floor; recessed spotlights

Outside

Front gardens laid out in lawn; fully enclosed rear garden laid out in paving stones; access to rear parking area (2 designated parking spaces); outside light and water tap; PVC oil storage tank; enclosed oil fired boiler.

Capital / Rateable Value

£150,000. Rates Payable = £1306.80 per annum (approx)

Tenure

Freehold.

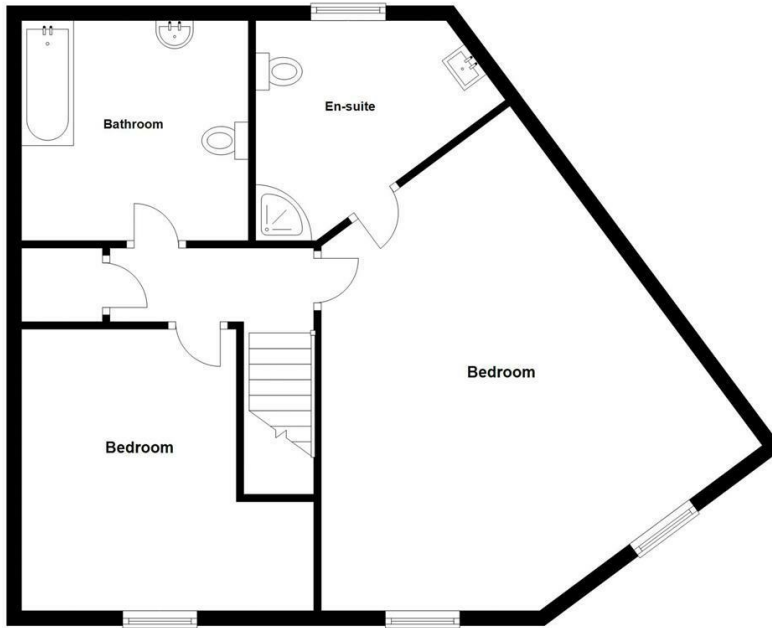






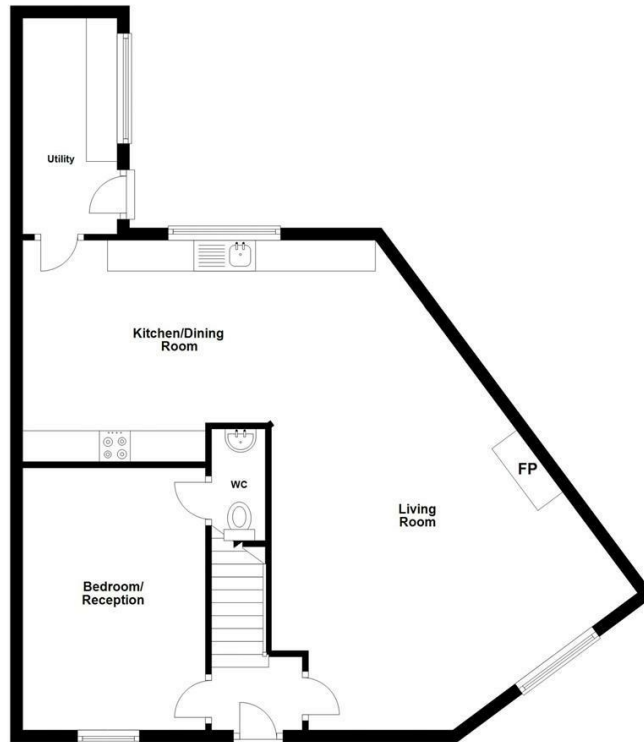
First Floor

Approx. 63.6 sq. metres (684.6 sq. feet)



Ground Floor

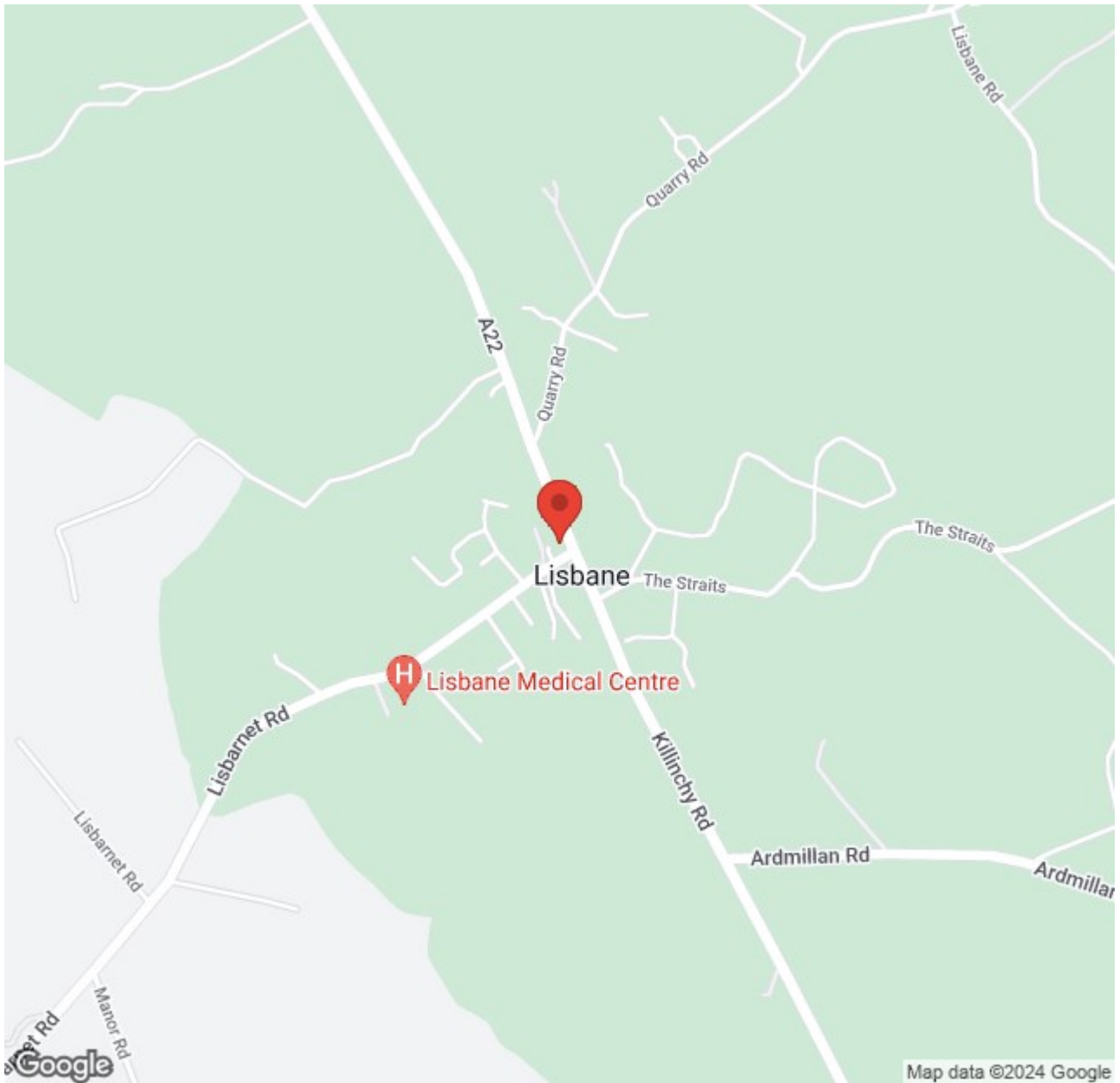
Approx. 69.3 sq. metres (745.9 sq. feet)



Total area: approx. 132.9 sq. metres (1430.5 sq. feet)

Photography and Floor Plans by houseflyni.co.uk
Plan produced using PlanUp.

4 Barnett Cottages, Lisbane



Energy Efficiency Rating		Current	Potential
Very energy efficient - lower running costs			
(92 plus) A			
(81-91) B			
(69-80) C			
(55-68) D			
(39-54) E			
(21-38) F			
(1-20) G			
Not energy efficient - higher running costs			
		68	71

Comber
 27 Castle Street, Comber, BT23 5DY
 T 028 91 8789596

Saintfield
 1B Main Street, Saintfield, BT24 7AA
 T 028 97 568300

Tim Martin & Company for themselves and for the vendors of this property have endeavoured to prepare these sales details as accurate and reliable as possible for the guidance of intending purchasers or lessees. These particulars are given for general guidance only and do not constitute any part of an offer or contract. The seller and us as agents, do not make any representation or give any warranty in relation to the property. We would recommend that all information contained in this brochure about the property be verified by yourself or professional advisors. Services, fittings and equipment referred to in the sales details have not been tested (unless otherwise stated) and no warranty will be given as to their condition. All measurements contained within this brochure are approximate. Please contact us prior to viewing the property. If there is any point of particular importance to you we would be pleased to provide additional information or make further enquiries. We will also confirm that the property remains available. This is particularly important if you are contemplating travelling some distance to view the property.