



Bond
Oxborough
Phillips

Changing Lifestyles

23 Lockeridge Road

Bere Alston

PL20 7AW



O.I.E.O - £220,000



Changing Lifestyles

01822 600700

23 Lockeridge Road, PL20 7AW.

A spacious two bedroom detached bungalow, in the heart of Bere Alston, with large garden and parking...



- Generous Plot Size
- Popular Village Location
- Short Walk to Village Pub & Shop
- Two Bedrooms
- Off-Road Parking
- Garage
- Large Garden
- Green house
- Conservatory
- EPC - D

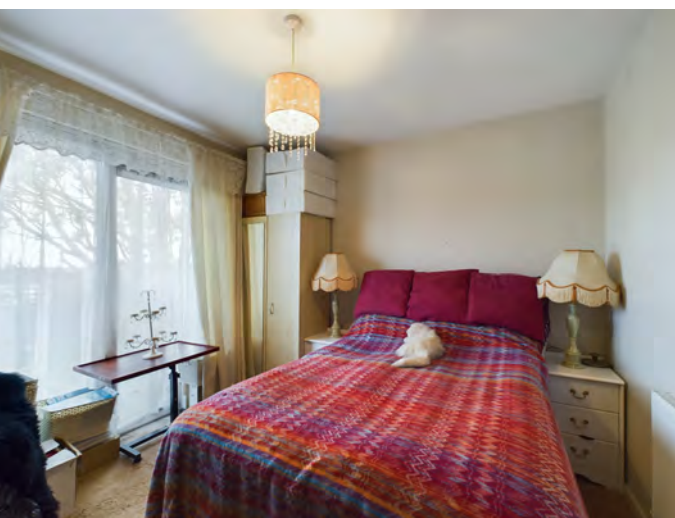


Charming 2-bedroom bungalow nestled in the picturesque village of Bere Alston, offering a cozy retreat with a characterful fireplace and a sprawling garden, perfect for those seeking a peaceful and idyllic setting. This delightful property exudes potential, awaiting the touch of a discerning buyer to bring it to its full glory through moderation.

As you step into the home, you are greeted by the warmth of a fireplace, creating a focal point in the living space, providing both comfort and a rustic ambiance. The property features two well-proportioned bedrooms, providing ample space for relaxation and personalization.

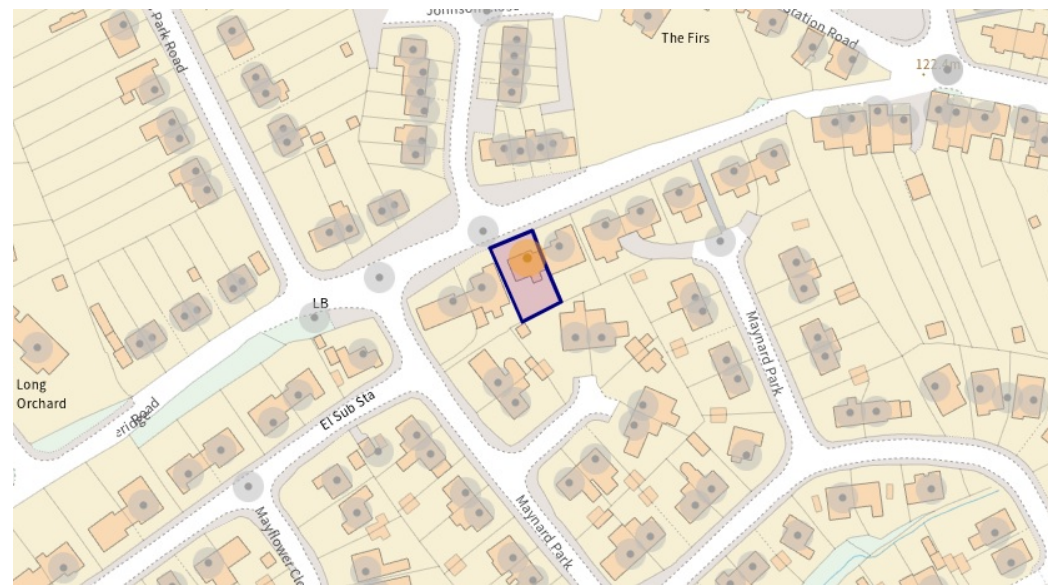
The generous garden surrounding the bungalow presents an opportunity for green thumbs and outdoor enthusiasts to cultivate a haven of natural beauty. Whether it's creating flower beds, a vegetable patch, or simply a tranquil space for outdoor gatherings, the possibilities are endless.

While the property is in need of moderation, this presents an exciting prospect for those with a vision for renovation and a desire to add their personal touch to every corner. With the right improvements, this bungalow has the potential to become a charming home.



Changing Lifestyles

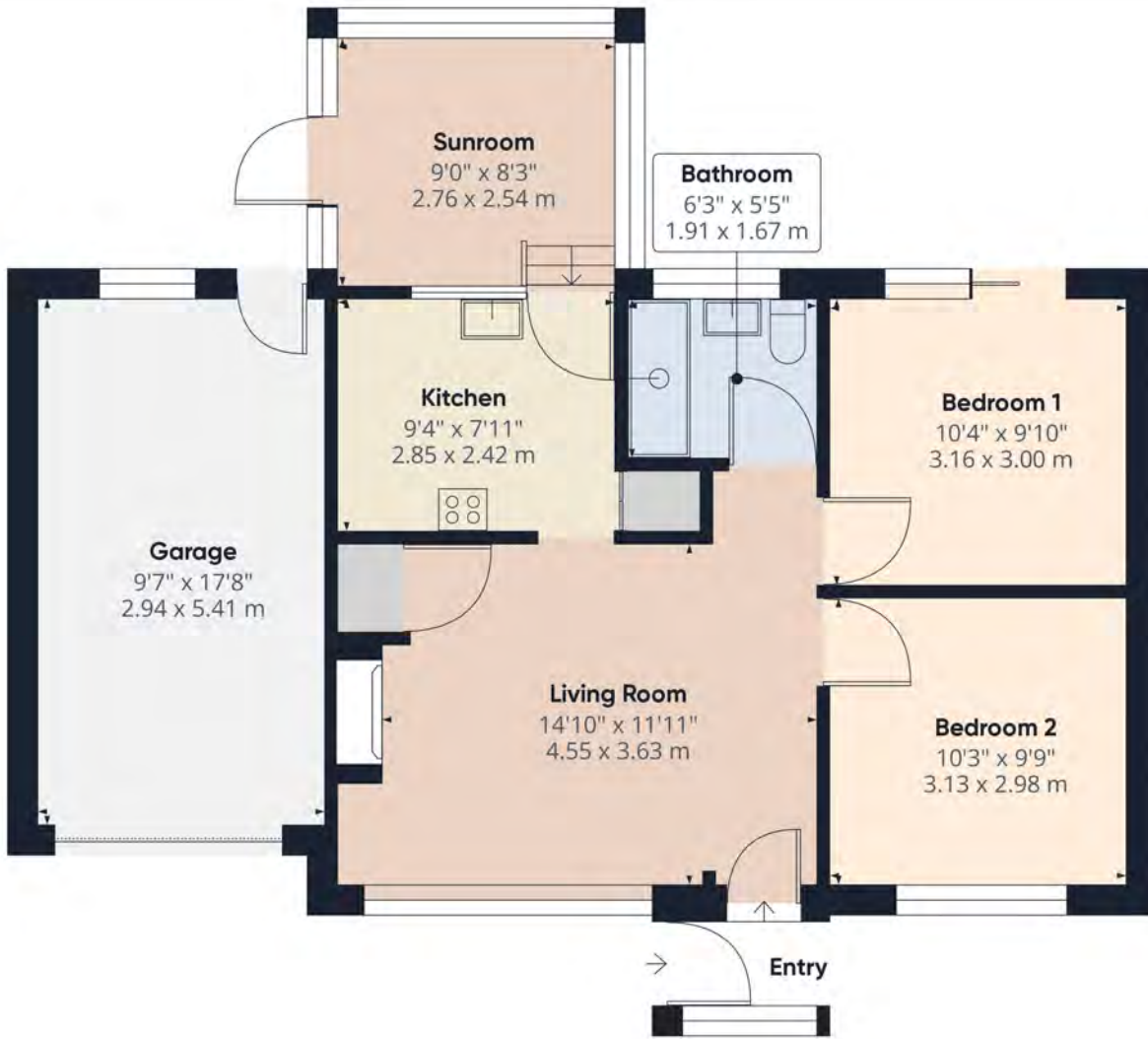
Located in the heart of Bere Alston, residents can enjoy the benefits of a close-knit community, scenic surroundings, and convenient access to local amenities. Embrace the opportunity to transform this property into your dream home, combining the charm of a traditional bungalow with modern comforts. Don't miss the chance to make this property your own and create lasting memories in a truly special setting.



Please do not hesitate to contact the team at Bond Oxborough Phillips Sales & Lettings on **01822 600700** for more information or to arrange an accompanied viewing on this property.

Scan here for our Virtual Tour:





Approximate total area⁽¹⁾
770.24 ft²
71.56 m²

(1) Excluding balconies and terraces

While every attempt has been made to ensure accuracy, all measurements are approximate, not to scale. This floor plan is for illustrative purposes only.

GIRAFFE 360

Have a property to sell or let?

If you are considering selling or letting your home, get in contact with us today on 01822 600700 to speak with one of our expert team who will be able to provide you with a free valuation of your home.

We have the facility to refer purchasers and vendors to conveyancing, mortgage advisors and Surveyors. It is your decision if you choose to deal with any of these companies however should you choose to use them we would receive a referral fee from them for recommending you. We will receive a referral fee between £50 - £300 depending on the company & individual circumstances. We have carefully selected these associates for the quality of their work and customer service levels.

Consumer Protection Regulations: We have not tested any apparatus, equipment, fixtures and fittings or services and so cannot verify that they are in working order or fit for the purpose. References to the Tenure of a Property are based on information supplied by the seller. We have not had sight of the Title Documents. A buyer is advised to obtain verification from their solicitor or surveyor. Floorplans shown are for guidance only and should not be relied upon. Items shown in photographs are NOT included unless specifically mentioned within these details. They may however be able by separate negotiation. You are advised to check the availability of this property before travelling any distance to view. Particulars are produced in good faith to the best of our knowledge and are set out as a general guide only.