



**Well Presented 3 Bedroom Terraced House
Conveniently Located Close To Town Centre,
Local Schools, Shops And Amenities
Ideal For First Time Buyers Or Investors**

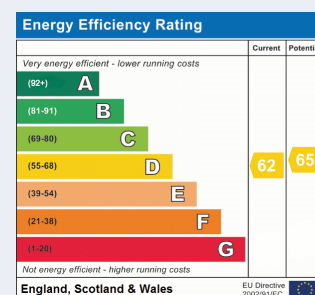


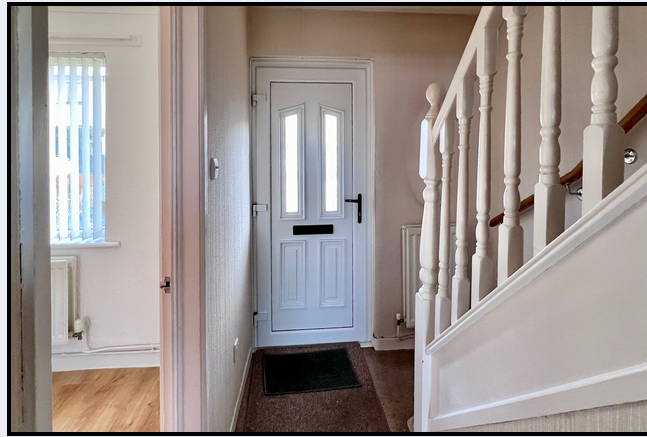
29 Woodside Hill, Portadown, Co Armagh BT62 1EP

- Entrance hall
- Lounge with laminate floor
- Oak kitchen with built-in oven & hob
- Open plan dining area
- 3 Bedrooms
- Bathroom and separate w.c.
- Oil central heating (with energy efficient condensing boiler)
- PVC double glazed windows
- Front garden
- Enclosed rear garden

PRICE GUIDE £95,000

These details do not constitute any part of an offer or contract. None of the statements contained in this sales brochure are to be relied on as statements or representations of fact and any intending purchaser must satisfy themselves by inspection or otherwise as to their correctness. The vendor does not make or give, and neither Alastair Stevenson the Property Spot nor any person in its employment has any authority to make or give any representation or warranty whatsoever in relation to this property. All dimensions are approximate and are taken at widest points





Well Presented 3 Bedroom Terraced House
Conveniently Located Close To Town Centre, Local Schools, Shops And Amenities
Ideal For First Time Buyers Or Investors

Entrance hall
11' 7" x 5' 10" (3.53m x 1.78m) Glazed PVC front door, under-stairs cloaks/storage cupboard

Lounge
17' 2" x 10' 3" (5.23m x 3.12m) Mahogany fireplace with tiled inset and hearth, laminate floor, corniced ceiling

Rear hall
5' 3" x 3' 11" (1.60m x 1.19m) Tiled floor, ½ glazed PVC door to rear

Kitchen / Dining
17' 1" x 7' 3" (5.21m x 2.21m) Solid oak kitchen comprising high and low level units with 1½ bowl sink, plumbed for washing machine, built-in oven & hob, integrated extractor fan, partially tiled walls, tiled floor, open plan dining area

Landing
8' 9" x 2' 9" (2.67m x 0.84m)

Bathroom
6' 3" x 5' 6" (1.91m x 1.68m) (at widest) White suite comprising panelled bath & wash hand basin, fully tiled walls, tiled floor

W.C.
4' 8" x 2' 8" (1.42m x 0.81m) White suite comprising w.c., tiled floor

Bedroom 1
13' 3" x 9' 0" (4.04m x 2.74m) Built-in wardrobe, laminate floor

Bedroom 2
11' 5" x 7' 5" (3.48m x 2.26m) Built-in wardrobe

Bedroom 3
10' 3" x 7' 11" (3.12m x 2.41m)

Outside
Front garden with timber fencing
Enclosed rear garden with timber boundary fencing
Access from rear

