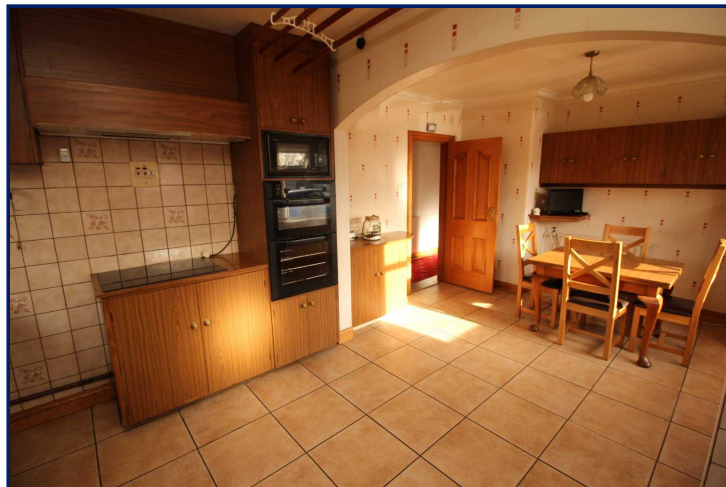
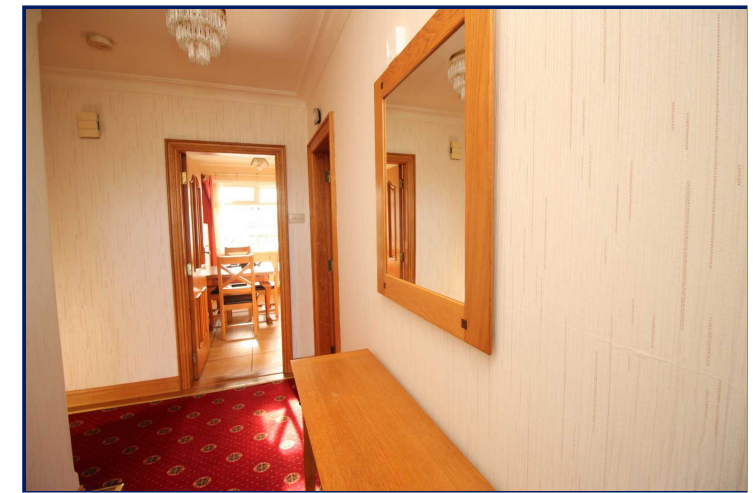


Energy Efficiency Rating		
	Current	Potential
Very energy efficient - lower running costs		
(92+) <b>A</b>		
(81-91) <b>B</b>		
(69-80) <b>C</b>		
(55-68) <b>D</b>		
(39-54) <b>E</b>	48	56
(21-38) <b>F</b>		
(1-20) <b>G</b>		
Not energy efficient - higher running costs		
England, Scotland & Wales	EU Directive 2002/91/EC	



Blaris Road, Lisburn, County Down, BT27

**Asking Price: £235,000**

**Freehold**

**Reeds Rains**

reedsrains.co.uk

Blaris Road, Lisburn, County Down, BT27

Asking Price: £235,000 Freehold

Council Tax Band:

EPC Rating: E

A delightful and well presented detached bungalow pleasantly situated just off the Blaris Road, convenient to Sprucefield shopping and Lisburn City Centre via road. An appealing semi-rural location yet, only a few minutes drive to local shops and amenities.

#### Entrance Hall

Pvc front door, part double glazed.

#### Lounge

14'5" x 12'8" (4.4m x 3.86m)

Feature fireplace with open fire, marble and granite inset and hearth.

#### Kitchen/ Dining

19'5" x 11'9" (5.92m x 3.58m)

Range of fitted high and low level units, laminate work tops, double drainer stainless steel sink unit, ceramic oven and electric ovens, open to casual dining area.

#### Bedroom 1

14'2" x 11'1" (4.32m x 3.38m)

Built-in robes

#### Bedroom 2

10'4" x 10'9" (3.15m x 3.28m)

Built-in robes

#### Bedroom 3

12' x 10'6" (3.66m x 3.2m)

Built-in robes

#### Bedroom 4

11'7" x 10'9" (3.53m x 3.28m)

#### Bathroom

White suite comprising panelled bath, wash hand basin, low level WC, electric shower unit, wall and floor tiling., built-in hot press.

#### Loft Room

Stairs from inner hallway to floored loft space with storage and velux window.

#### Driveway to side

Part shared.

#### Large Front Gardens

Extensive level site with beautiful lawns, variety of mature trees, views towards surrounding countryside.

#### Epc

The Reeds Rains branches at 350 Upper Newtownards Road, Ballyhackamore, Belfast, N Ireland BT4 3EX, 18 Main Street, Bangor, Co Down, N Ireland BT20 5AG, Somerset House, 240-242 Ormeau Road, Belfast, Co Antrim, N Ireland BT7 2FZ, 10 High Street, Carrickfergus, Co Antrim, N Ireland BT38 7AF, 8/8A Carrmoney Road, Glengormley, County Antrim, N Ireland BT36 6HN, 14/16 Market Street, Lisburn, County Antrim, N Ireland BT28 1AB and 2 Frances Street, Newtownards, County Down, N Ireland BT23 4JA are operated by Favscos NI Limited which is independently owned and operated under a Licence from Reeds Rains Limited.

All Measurements  
All Measurements are Approximate.

Laser Tape Clause  
All measurements have been taken using a laser tape measure and therefore, may be subject to a small margin of error.

Floorplan Clause  
Measurements are approximate. Not to Scale. For illustrative purposes only.

For full EPC please contact the branch.

