

Part Ground Floor, House of Vic-Ryn, 1 Rathdown Road, Lissue Industrial Estate, Lisburn, BT28 2RB

To Let

Existing Ground Floor Retail Accommodation Available Totalling Approximately 9,740 sq ft With Ample On-site Parking

Suitable For a Variety of Uses



Lambert
Smith
Hampton

Location

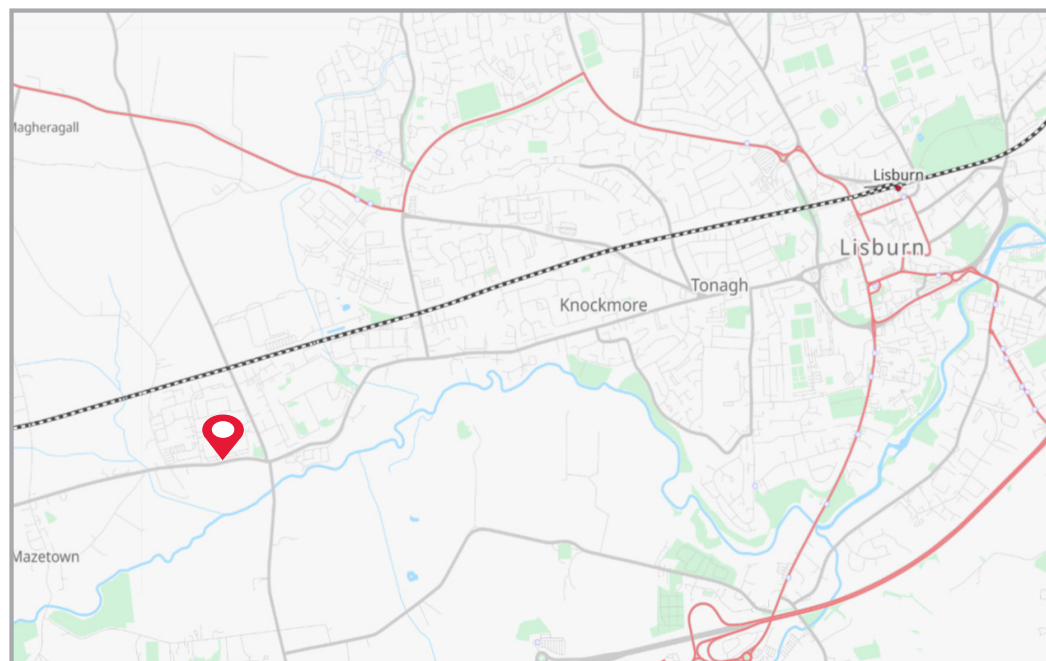
The City of Lisburn benefits from excellent levels of accessibility given its location on two Junctions (6 and 7) of the M1 Motorway and the Sprucefield interchange off the A1 Newry/Dublin dual carriageway. The location also benefits from its proximity to Belfast International and City Airports and the Ports of Larne, Belfast and Warrenpoint.

The subject property is located off the highly successful Lissue Industrial Estate, on the Moira Road just outside Lisburn, approximately 2 miles from Lisburn City Centre and 3 miles from the M1 Motorway. The Moira Road is a major arterial route into Lisburn from the M1/Moira motorway intersection. Retail occupiers within the vicinity include Stephen Moore Carpets, Lidl, House Proud, Beggs & Partners and Cafe Vic-Ryn.

Description

The property comprises a ground floor retail unit within the House of Vic-Ryn complex and is finished to a high specification throughout. Internally the unit benefits from a mixture of carpeted and wooden flooring, suspended ceiling, LED spot lighting, air conditioning, internal sound system, plastered and painted walls and also benefits from glazed frontage as well as both pedestrian and roller shutter door access.

The property is suitable for a variety of uses and benefits from ample on-site car parking. For further information regarding alternative uses, please contact the agent.



Schedule of Accommodation

Unit	Sq Ft	Sq M
Part Ground Floor	9,740	904.86
Total	9,740	904.86

Lease Details

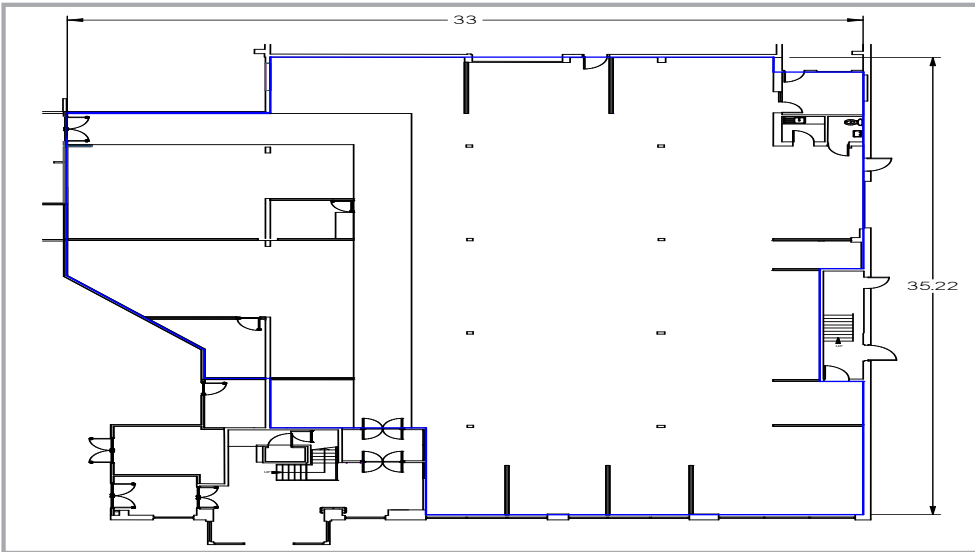
Term -	By negotiation.
Rent -	Price on application.
Repairs -	The tenant will pay a fair proportion of the repairs by way of service charge to be included within the quoted rents.
Insurance -	The tenant will reimburse the landlord with a fair proportion of the cost of insuring the premises.



For Indicative Purposes Only

Internal Images





Rates

We have been advised by Land and Property Services of the following:

Net Annual Value 23/24: £57,100.00

Rate Pounding 23/24: £0.5261

Rates Payable 23/24: estimated £30,042.93 per annum

Energy Performance Certificate

TBC

Value Added Tax

We have been advised that the subject property is registered for VAT, therefore VAT will be charged in addition to the prices quoted.

Viewing Details / Further Information

For further information or to arrange a viewing, please contact:

**Lambert
Smith
Hampton**

Kyle Abernethy
028 9032 7954
kabernethy@lsh.ie

Tom Donnan
028 9032 7954
tdonnan@lsh.ie

Lambert Smith Hampton
The Kelvin
17-25 College Square East
Belfast
BT1 6DH

subject to Contract and Exclusive of VAT © Lambert Smith Hampton February 2024

Disclaimer: Lambert Smith Hampton Group Limited and its subsidiaries and their joint agents if any ("LSH") for themselves and for the seller or landlord of the property whose agents they are give notice that: (i) These particulars are given and any statement about the property is made without responsibility on the part of LSH or the seller or landlord and do not constitute the whole or any part of an offer or contract. (ii) Any description, dimension, distance or area given or any reference made to condition, working order or availability of services or facilities, fixtures or fittings, any guarantee or warranty or statutory or any other permission, approval or reference to suitability for use or occupation, photograph, plan, drawing, aspect or financial or investment information or tenancy and title details or any other information set out in these particulars or otherwise provided shall not be relied on as statements or representations of fact or at all and any prospective buyer or tenant must satisfy themselves by inspection or otherwise as to the accuracy of all information or suitability of the property. (iii) No employee of LSH has any authority to make or give any representation or warranty arising from these particulars or otherwise or enter into any contract whatsoever in relation to the property in respect of any prospective purchase or letting including in respect of any re-sale potential or value or at all. (iv) Price or rent may be subject to VAT and any prospective buyer or tenant must satisfy themselves concerning the correct VAT position. (v) Except in respect of death or personal injury caused by the negligence of LSH or its employees or agents, LSH will not be liable, whether in negligence or otherwise howsoever, for any loss arising from the use of these particulars or any information provided in respect of the property save to the extent that any statement or information has been made or given fraudulently by LSH. (vi) In the case of new development or refurbishment prospective buyers or tenants should not rely on any artists' impressions or architects' drawings or specification or scope of works or amenities, infrastructure or services or information concerning views, character or appearance and timing concerning availability or occupation and prospective buyers or tenants must take legal advice to ensure that any expectations they may have are provided for direct with the seller or landlord and LSH shall have no liability whatsoever concerning any variation or discrepancy in connection with such matters.