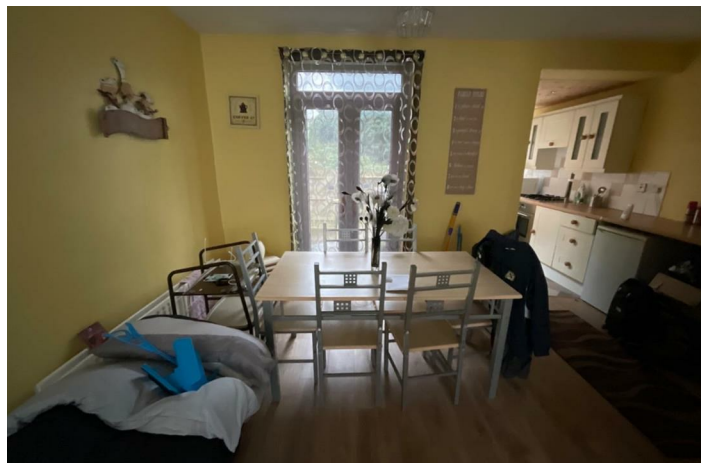
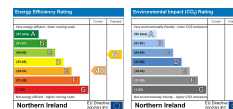




7 Hesketh Road  
Belfast, BT14 7JU

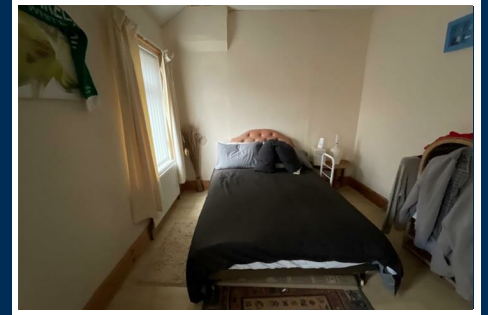
Offers in the region of  
**£89,950**



# 7 Hesketh Road

, Belfast, BT14 7JU

Offers in the region of £89,950



INVESTMENT OPPORTUNITY! A well proportioned end terrace property in a highly regarded residential location which can be purchased with a long-term tenant in situ paying £675PCM.

Internally the dwelling comprises of an entrance hallway, open plan reception with dining area, modern fitted kitchen, classic white bathroom suite and two double bedrooms. Outside there are enclosed yards to the front and rear.

The property further benefits from oil fired central heating and uPVC double glazing.

Hesketh Road is conveniently located close to many leading shops and amenities and shares excellent transport links with Belfast City Centre.

Contact Rea Estates NOW for further details or to arrange an appointment to view.

## Ground Floor

### Entrance Hallway

PVC front door with glass inset, tiled flooring, panelled radiator, enclosed electricity meter, stairs leading to first floor

### Living Room 21'10" (6.66m)

Bay window, double patio doors leading to rear yard, wood laminate flooring, 2 double panelled radiators, ample dining space

### Kitchen 17'6" x 4'11", (5.34m x 1.51,)

Fitted kitchen with high and low level units, tiled splash backs and contrasting worktops, stainless steel sink and drainer with mixer taps, integrated oven and hob with extractor hood, recessed lighting, vinyl flooring

## First Floor

### Landing

Access to roof space

### Bathroom

Classic white bathroom suite including low flush WC, pedestal wash hand basin and free standing electric shower, tiled flooring and walls, heated towel rail

### Front Bedroom 9'8" x 14'9" (2.97m x 4.52m)

Enclosed storage cupboard, wood laminate flooring, 2 panelled radiators

### Rear Bedroom 9'3" x 8'5" (2.84m x 2.59m)

Wood laminate flooring, panelled radiator

## Outside

### Front

Brick privacy wall with metal entrance gate, paved yard

### Rear

Enclosed yard with access to rear entry



  
**Rea Estates**  
Sales | Lettings

## Road Map



## Hybrid Map



## Terrain Map



## Floor Plan

### VIEWING STRICTLY BY APPOINTMENT WITH OUR OFFICE

These particulars, whilst believed to be accurate are set out as a general outline only for guidance and do not constitute any part of an offer or contract. Intending purchasers should not rely on them as statements of representation of fact, but must satisfy themselves by inspection or otherwise as to their accuracy. No person in this firm's employment has the authority to make or give any representation or warranty in respect of the property.