

To Let

First Floor, 3 Upper Main Street,
Letterkenny, Co Donegal, F92 X9FW



€5,200 per annum / €100 per week.
First Floor Unit 51.26 Sq M / 552 Sq Ft approximately.

Property Highlights

- A prime town centre location.
- Suitable for a variety of uses.
- First floor premises.
- Adjacent to Bank of Ireland.
- Opposite Market Square.
- Lease term negotiable.

Contact

Kiara Rainey
Rainey Estate Agents
45 Port Road
Letterkenny
Co Donegal
T: 074 9122211
E: property@raineyproperty.ie



[daft.ie](https://www.daft.ie) / [myhome.ie](https://www.myhome.ie) / [propertytypal.com](https://www.propertytypal.com)

Location

The premises enjoys a prime location in the heart of Letterkenny's main commercial thoroughfare. Local occupiers include Boots The Chemist, Market Square Shopping Centre, County Seat, Watson Menswear, Bank of Ireland etc. etc.

Description

The premises occupies a high profile position on Main Street with a high volume of passing pedestrian and vehicular traffic.

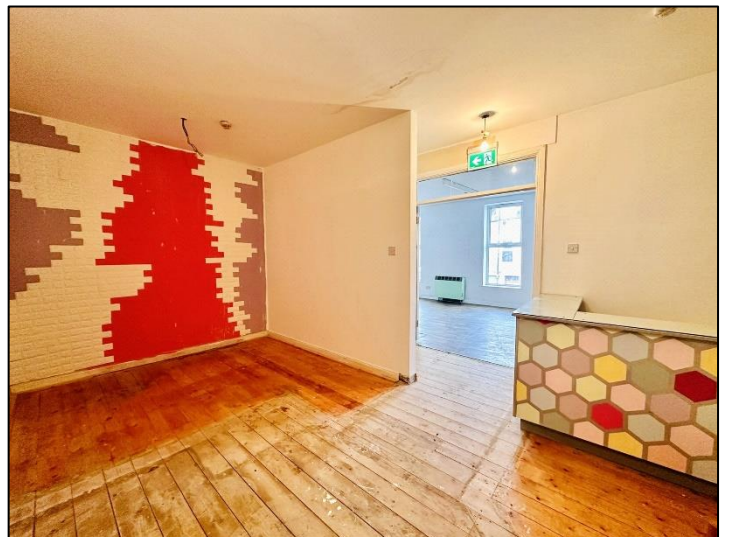
The first floor accommodation extends to 51.26 sq m / 552 sq ft approximately, suitable for a variety of uses such as office, hair / beauty salon, physiotherapy clinic etc. The premises is laid out with accommodation comprising an open plan room facing onto Main Street, Reception / Office / Waiting Room, WC and WHB and kitchenette.

BER D2. BER No. 800730012

Lease Term Available: Negotiable.

Directions: As Main Street is approached from the Port Road / High Road direction along the one way traffic system the premises is on the left immediately before the Bank of Ireland and directly opposite Market Square the focal point of the town centre.

Latitude: 54.949763, Longitude: -7.737257 (copy into Google Maps for location / streetview).



CONDITIONS TO BE NOTED: A full copy of our general brochure conditions can be requested from our office. We recommend that you familiarise yourself with these general conditions. While care has been taken to ensure that information contained in our publications is correct at the time of publication, changes in circumstances after the time of publication may affect on the accuracy of this.

Ordnance Survey Ireland Licence No. CYAL 50293602. PSRA Registration No. 004598.