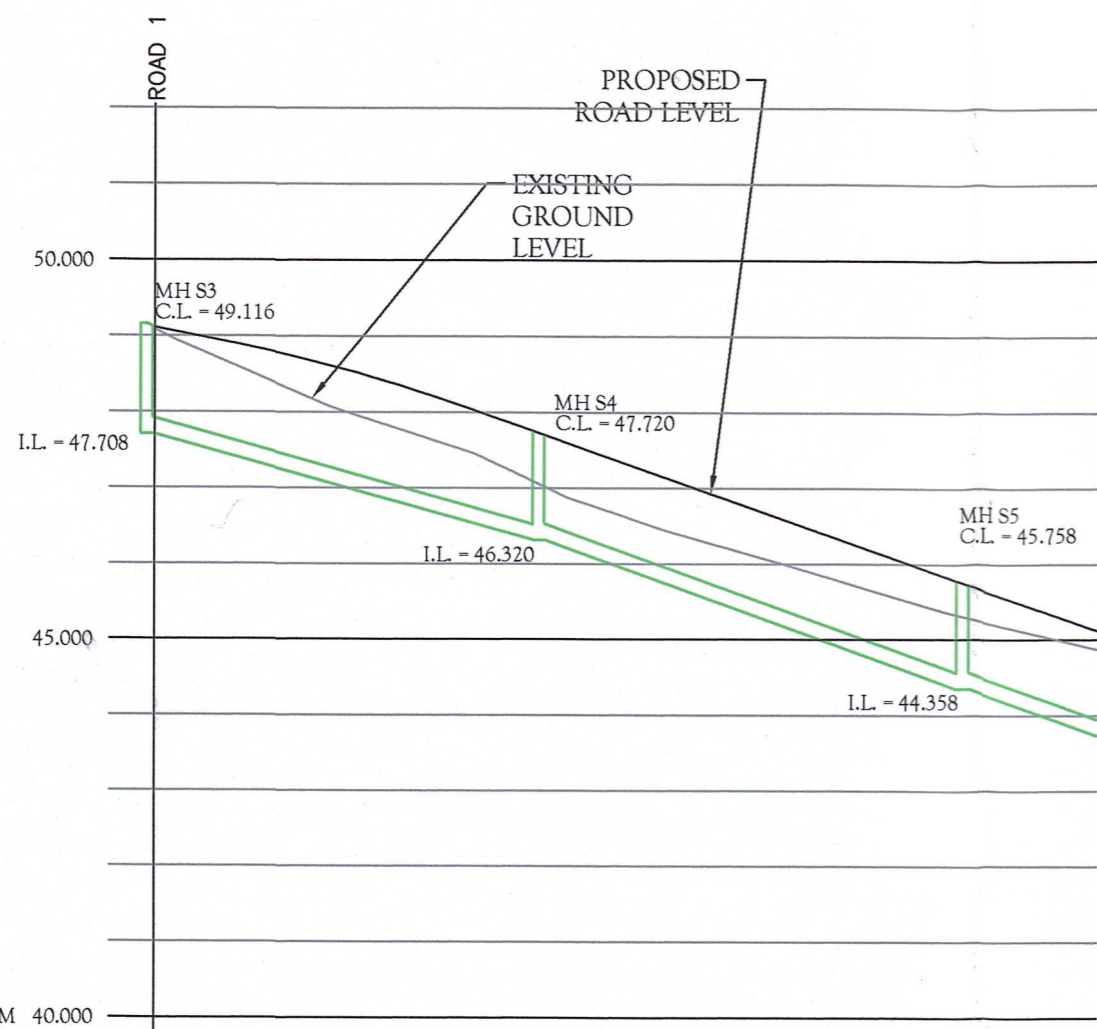


| CHAINAGE | 0.000 | 10.000 | 13.699 | 20.000 | 20.076 | 25.000 | 30.000 | 30.065 | 35.000 | 35.799 | 40.000 | 45.108 | 50.000 | 54.825 | 60.000 | 66.811 | 70.000 | 76.811 | 80.000 | 85.000 | 90.000 | 95.000 | 100.000 | 101.811 | 104.724 |
|-----------------------|---------------------|--------|--------------------|--------|--------|--------|---------------------|--------|--------|--------|--------------------|--------|--------|--------|---------------------|--------|--------|--------|--------|--------|--------|--------|---------|---------|---------|
| EXISTING GROUND LEVEL | 55.573 | 55.121 | | 54.495 | | | 54.050 | | | 51.998 | | | 50.859 | | 49.730 | | 49.329 | | 49.095 | | 49.086 | | 49.186 | 48.907 | 48.820 |
| ALIGNMENT LEVEL | 55.573 | 55.076 | | 54.578 | 54.545 | 54.311 | 53.994 | 53.627 | 53.563 | 53.227 | | 52.427 | | 51.627 | | 50.827 | | 50.282 | 50.037 | 49.694 | 49.401 | 49.158 | 48.965 | 48.907 | 48.820 |
| VERTICAL ALIGNMENT | G=-4.975% 1:20.1 | | L=15.123 KF=5.0 | | | | G=-8.000% 1:12.5 | | | | KF=5.0 L=25.000 | | | | G=-3.000% 1:33.3 | | | | | | | | | | |
| HORIZONTAL ALIGNMENT | | | R=25.000 | | | | R=25.000 | | | | R=7.500 | | | | | | | | | | | | | | |

NOTES:

- DRAINAGE DESIGNS SUBJECT TO CHANGE UNTIL ARTICLE 161 APPROVAL IS GRANTED BY NI WATER.
- GRANULAR BED AND SURROUND TO ALL PIPES WITH COVER GREATER THAN 1.2M UNDER ROAD AND 0.9M UNDER OTHER AREAS
- CONCRETE BED AND SURROUND TO PIPES WITH COVER LESS THAN 1.2M UNDER ROADS AND 0.9M UNDER OTHER AREAS
- ALL WORK IS TO BE CARRIED OUT TO SEWERS FOR ADOPTION NORTHERN IRELAND EDITION 1
- LADDERS ARE REQUIRED IN MANHOLES WHERE THE DEPTH FROM COVER LEVEL EXCEEDS 2.5M.
- ALL MANHOLE COVERS AND FRAMES TO BS EN 124 D400, 675 x 675 mm CLEAR OPENING, DOUBLE TRIANGULAR, BOLTED.
- ALL EXISTING INVERT LEVELS TO BE CONFIRMED BY THE DEVELOPER ON SITE PRIOR TO COMMENCEMENT.



| CHAINAGE | 0.000 | 5.376 | 10.000 | 15.000 | 20.000 | 20.376 | 30.000 | 40.000 | 50.000 | 60.000 | 62.594 |
|-----------------------|---------------------|--------|--------------------|--------|--------|--------|---------------------|--------|--------|--------|--------|
| EXISTING GROUND LEVEL | 49.092 | | 48.208 | | 47.530 | | 46.706 | 46.091 | 45.503 | 44.999 | 44.873 |
| ALIGNMENT LEVEL | 49.116 | 48.901 | 48.695 | 48.424 | 48.103 | 48.076 | 47.403 | 46.703 | 46.003 | 45.303 | 45.121 |
| VERTICAL ALIGNMENT | G=-4.000% 1:25.0 | | L=15.000 KF=5.0 | | | | G=-7.000% 1:14.3 | | | | |
| HORIZONTAL ALIGNMENT | | | | | | | | | | | |

| MANHOLE DIAMETERS | |
|--|--|
| NOMINAL DIA. OF LARGEST PIPE IN MANHOLE (mm) | MIN. NOMINAL INTERNAL DIA. OF MANHOLE (mm) |
| LESS THAN 375 | 1200 |
| 375 - 450 | 1350 |
| 500 - 700 | 1500 |
| 750 - 900 | 1800 |
| GREATER THAN 900 | PIPE DIA. + 900 |

LA01/2019/0993

Planning Office RECEIVED
20 OCT 2020

Causeway Coast and Glens Borough Council
Drawing Number **068**

| SECTIONS REVISED | BY | DATE | MD | RGS |
|---------------------|-----|----------|----|------|
| DRAINAGE ADDED | B | 10.01.20 | MD | RGS |
| TITLE BLOCK REVISED | A | 15.08.19 | MD | RGS |
| AMENDMENTS | REV | DATE | BY | APPR |

Planning Act 2011
Causeway Coast and Glens Borough Council
GRANTED
Subject to Conditions (if any) as set out on
LA01/2019/0993
Decision form No. **23/6/21**
Date **23/6/21**

SHEEHY CONSULTING
Consulting Civil & Structural Engineers, Project Managers
Environmental Engineers, CDM Co-ordinators & Traffic Engineers
186 BALLYMAGUIRE ROAD, STEWARTSTOWN,
Co TYRONE BT71 5NN
t: 028 86735951
e: info@sheehyconsulting.co.uk

| | |
|--------------|--|
| STATUS: | PLANNING |
| CLIENT: | MCALISTER BUILDERS |
| ARCHITECT: | VISION DESIGN ARCHITECTS |
| PROJECT: | PROP. RESIDENTIAL DEVELOPMENT, MILL COTTAGE DRIVE, STRANOCUM |
| TITLE: | ROAD LONG SECTIONS |
| SCALE: | 1:500 / 1:100 @ A2 |
| DATE: | JUNE 2019 |
| DRAWN BY: | MD |
| CHECKED BY: | MC |
| APPROVED BY: | RGS |
| PROJECT No.: | 19-1056 |
| DRAWING No.: | C-04 |
| REV. No.: | C |