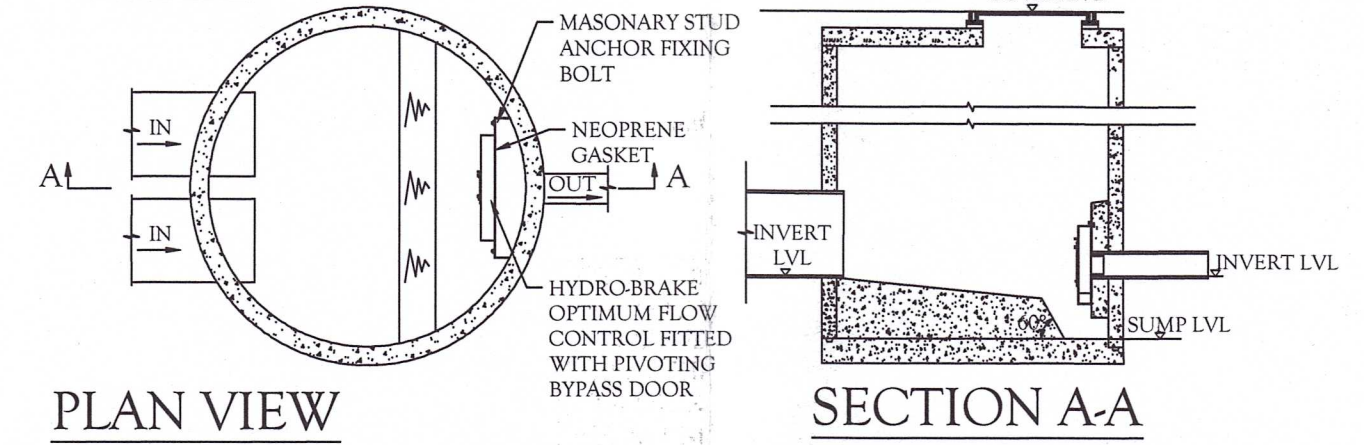


DISCHARGE INTO UNDESIGNATED WATERCOURSE VIA HEADWALL AS PER S6 CONSENT (REF: IN1-19-10102).

HYDROBRAKE MH DETAIL

SCALE 1:50

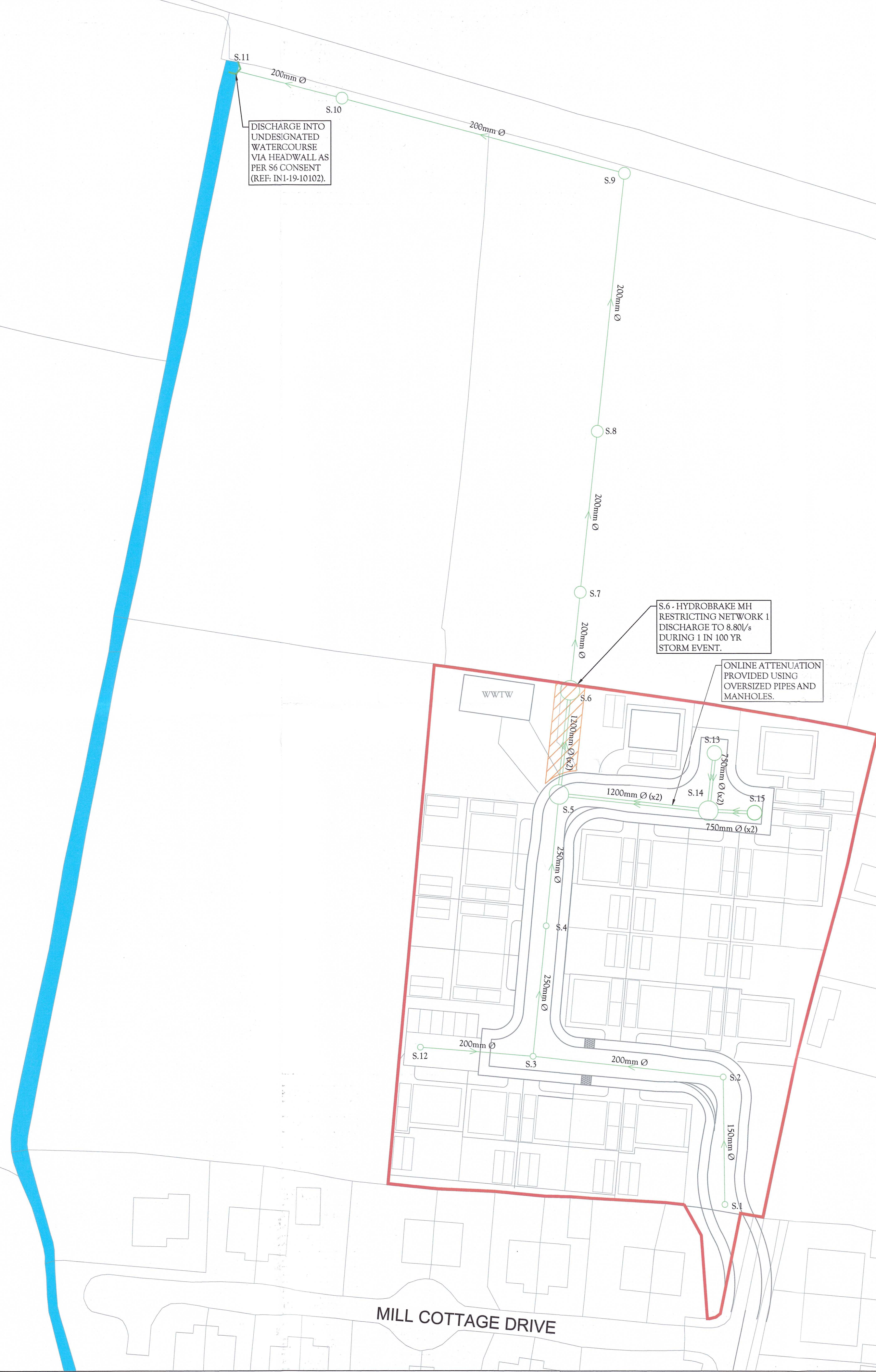


- LEGEND:**
- PROPOSED STORM SEWER
 - PROPOSED STORM MANHOLE
 - PROPOSED HEADWALL
 - SITE BOUNDARY
 - UNDESIGNATED WATER COURSE
 - 6m NIW WAYLEAVE

- NOTES:**
1. DRAINAGE DESIGNS SUBJECT TO CHANGE UNTIL ARTICLE 161 APPROVAL IS GRANTED BY NI WATER.
 2. CLASS E BEDDING TO ALL PIPES WITH COVER GREATER THAN 1.2M UNDER ROAD AND 0.9M UNDER OTHER AREAS
 3. CONCRETE BED AND SURROUND TO PIPES WITH COVER LESS THAN 1.2M UNDER ROADS AND 0.9M UNDER OTHER AREAS
 4. ALL WORK IS TO BE CARRIED OUT TO SEWERS FOR ADOPTION NORTHERN IRELAND EDITION 1
 5. LADDERS ARE REQUIRED IN MANHOLES WHERE THE DEPTH FROM COVER LEVEL EXCEEDS 2.5M.
 6. ALL EXISTING INVERT LEVELS TO BE CONFIRMED BY THE DEVELOPER ON SITE.

ATTENUATION STORAGE VOLUMES:

PIPE VOLUMES	= 122.650m ³
MANHOLE VOLUMES	= 186.688m ³
TOTAL STORAGE (1in100yr)	= 309.338m³



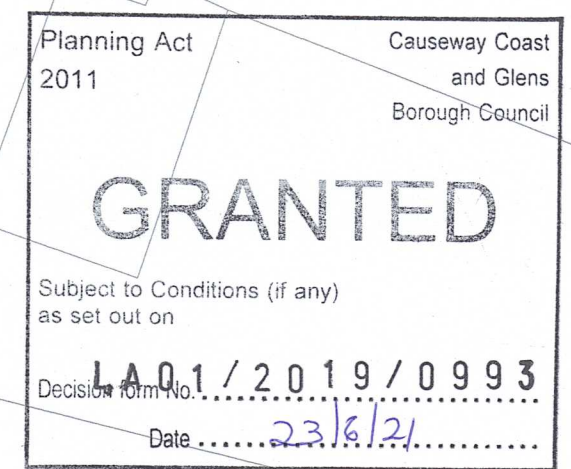
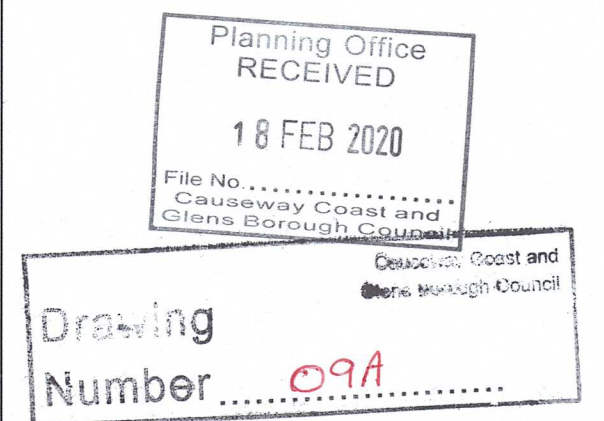
S.6 - HYDROBRAKE MH RESTRICTING NETWORK 1 DISCHARGE TO 8.80/s DURING 1 IN 100 YR STORM EVENT.

ONLINE ATTENUATION PROVIDED USING OVERSIZED PIPES AND MANHOLES.

MAIN STREET

MILL COTTAGE DRIVE

LA01/2019/0993



AMENDMENTS	REV	DATE	BY	APPR
UPDATED TO 1 IN 100YR STORAGE	C	13.02.20	MG	RGS
WWTW ADDED	B	09.01.20	MG	RGS
UPDATED DISCHARGE POINT	A	29.08.19	MG	RGS

SHEEHY CONSULTING
 Consulting Civil & Structural Engineers, Project Managers
 Environmental Engineers, CDM Co-ordinators & Traffic Engineers
 186 BALLYMAGUIRE ROAD, STEWARTSTOWN,
 Co TYRONE BT71 5NN
 t: 028 86735951
 e: info@sheehyconsulting.co.uk

STATUS: **PLANNING**

CLIENT: **MICALISTER BUILDERS**

ARCHITECT: **VISION DESIGN ARCHITECTS**

PROJECT: **PROP. RESIDENTIAL DEVELOPMENT, MILL COTTAGE DRIVE, STRANOCUM**

TITLE: **CONCEPTUAL DRAINAGE LAYOUT**

OVERSIZED MANHOLE DIAMETERS

S.5	4000
S.6	4000
S.13	3000
S.14	4000
S.15	3000

MANHOLE DIAMETERS (unless noted otherwise)

NOMINAL DIA. OF LARGEST PIPE IN MANHOLE (mm)	MIN. NOMINAL INTERNAL DIA. OF MANHOLE (mm)
LESS THAN 375	1200
375 - 450	1350
500 - 700	1500
750 - 900	1800
GREATER THAN 900	PIPE DIA. + 900

HYDROBRAKE DETAILS

MH NO.	HYDROBRAKE MODEL NO.	DESIGN HEAD (m)	DESIGN FLOW (l/s)
S.6	SHE-0134-8800-1200-8800	1.2	8.80

SCALE: 1:500 @ A1	DATE: JUNE 2019
DRAWN BY: SM	CHECKED BY: MC
PROJECT No: 19-1056	DRAWING No: C-02
	REV No: C