



Lisney

COMMERCIAL REAL ESTATE

BELFAST CITY
HALL

SUBJECT
PROPERTY

UPPER ARTHUR
STREET

MAY STREET

FOR SALE

City Centre Refurbishment/Redevelopment Opportunity - c. 22,283 Sq. Ft. (NIA)

VICTORIA HALL, 12 MAY STREET, BELFAST, BT1 4NL

OUTLINE FOR INDICATIVE PURPOSES ONLY

Lisney

COMMERCIAL REAL ESTATE

FEATURES

Refurbishment / Redevelopment opportunity

Modern six storey City Centre building - circa 22,283 sq ft (NIA)

Currently in office use but could be repurposed (STP)

Prominent corner position at the junction of May Street and Upper Arthur Street

Close to retail and office cores with easy access to public transport nodes and car parking

[CLICK FOR DRONE FOOTAGE](#)



LOCATION

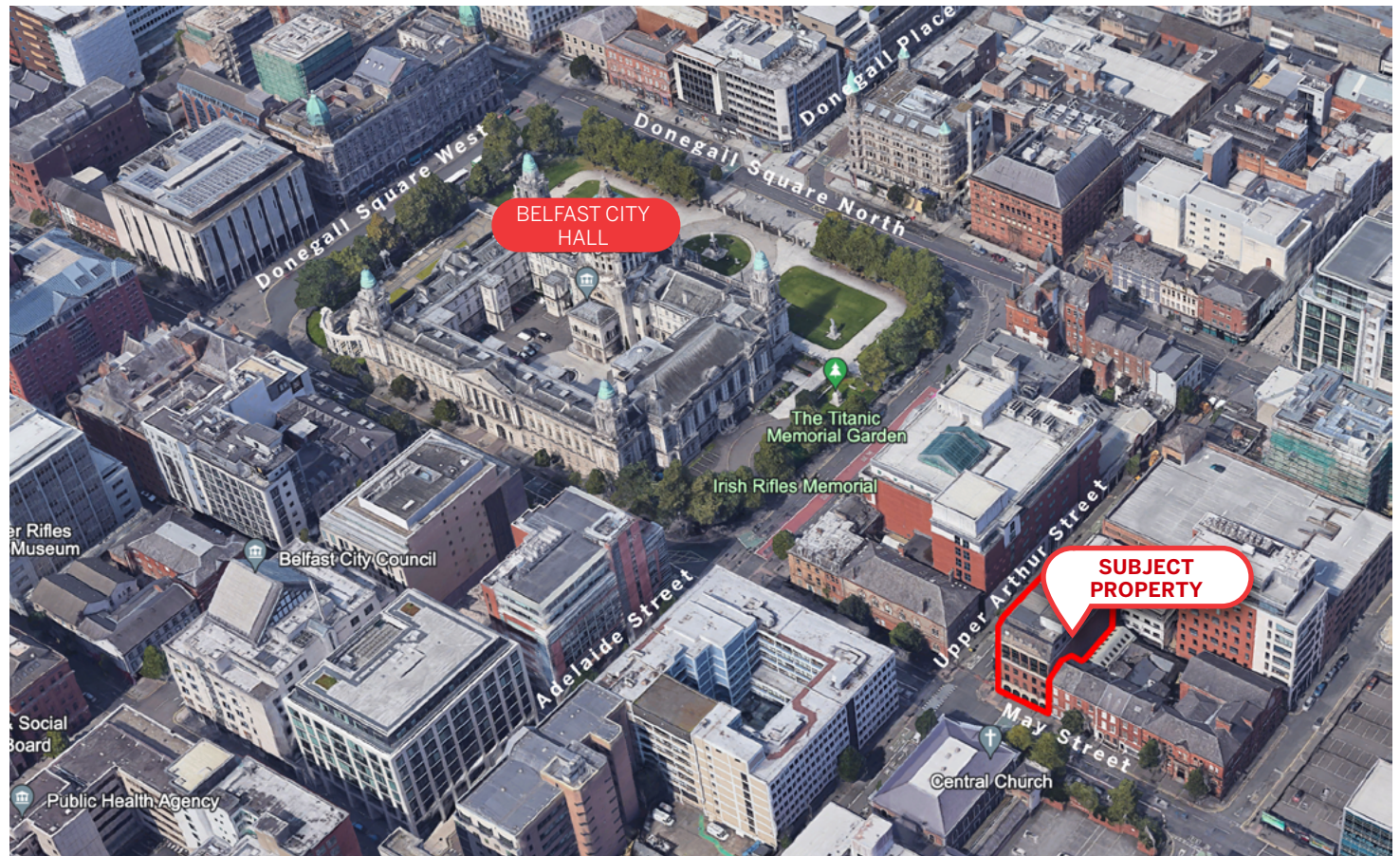
Belfast is the capital city of Northern Ireland and as such provides a wide range of facilities and amenities and is served by strong roads rail, air and sea infrastructure.

Victoria Hall is situated c. 100m east of the City Hall within the recognised commercial core close to retail, office and religious buildings.

The building is located at the junction of May Street and Upper Arthur Street on a prominent corner site. The building is just c. 100 metres from an NCP multistorey car park on Montgomery Street along with a number of nearby surface car parks within walking distance.

Well known occupiers in the area include Bank of Ireland, Ulster Bank, Northern Ireland Housing Executive, Ten Square Hotel, Victoria Square Shopping Centre and a number of public bodies including Belfast City Council.

Victoria Hall occupies a strong position and is shown for identification purposes outlined in red in the photograph below.



DESCRIPTION

Victoria Hall occupies a plot of 0.11 acres (0.045 Ha) and comprises a vacant, modern, office building arranged over ground and 5 upper floors. We are advised the building has a floor area of c. 22,283 sq ft (NIA) served by 2 passenger lifts.

The external facades are a mix of red brickwork and render, arched windows at ground floor and upper floors under a mansard roof. We understand the building was constructed circa 1991.

The building has natural light on three elevations and the core is ideally centrally located.

Internally the building provides a mix of open plan and cellularised space installed by the previous occupier to include an extensive range of private offices, meeting rooms and ancillary accommodation.

Whilst refurbishment for single/multi office occupancy is one option, we consider that there may be scope to consider alternative uses, such as residential by way of refurbishment/redevelopment, subject to planning.

ACCOMMODATION

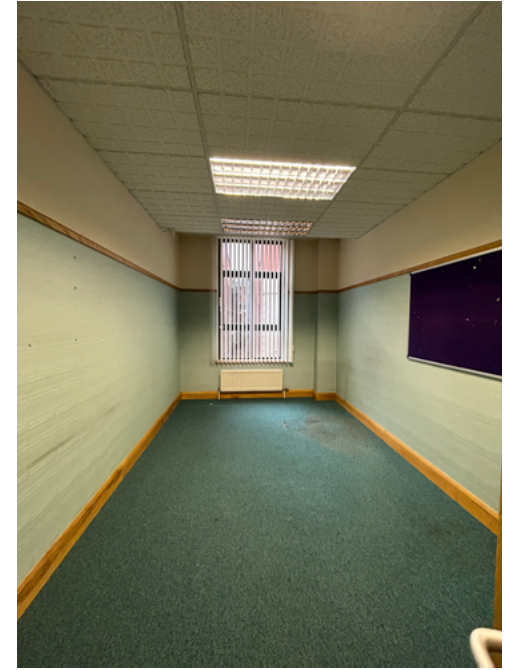
We estimate the building to have the following approximate floor areas.

Floor	Sq M	Sq Ft
Ground Floor	357	3,842
First Floor	340	3,663
Second Floor	347	3,734
Third Floor	348	3,746
Fourth Floor	339	3,646
Fifth Floor	339	3,652
Sixth Floor	Plant Room	Plant Room
Total	2,070	22,283 (NIA)



VIEW OF WEST ELEVATION, FACING ONTO UPPER ARTHUR STREET





LOCATION



TITLE

We understand the property is held on a freehold title, subject to a fee farm grant.

SALE PRICE

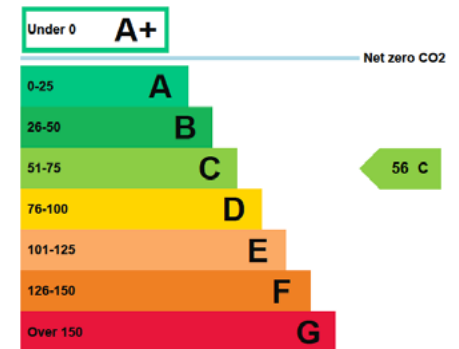
Offers invited in the region of £2,750,000.

VAT

All prices, outgoings and rentals are exclusive of, but may be liable to VAT.

EPC

The property has an energy rating of C56. A full certificate can be made available upon request.



CUSTOMER DUE DILIGENCE

As a business carrying out estate agency work we are required to verify the identity of both the vendor and the purchaser as outlined in the following: The Money Laundering, Terrorist Financing and Transfer of Funds (Information on the Payer) Regulations 2017 - <https://www.legislation.gov.uk/ukxi/2017/692/contents>. Any information and documentation provided by you will be held for a period of five years from when you cease to have a contractual relationship with Lisney. The information will be held in accordance with General Data Protection Regulation (GDPR) on our client file and will not be passed on to any other party, unless we are required to do so by law and regulation.

Lisney

COMMERCIAL REAL ESTATE

For further information:

Lynn Taylor: 028 9050 1556 / 07813 020 181

ltaylor@lisney-belfast.com

David McNellis: 028 9050 1551 / 07887 911 077

dmcnellis@lisney-belfast.com

Viewing Strictly by appointment with the sole selling agent Lisney.

The Directors of Lisney for themselves and for the vendors or lessors of this property whose agents they are give notice that (i) the particulars are set out as a general outline only for the guidance of intended purchasers or lessors, and do not constitute part of, an offer or contract; (ii) all descriptions, references to condition and necessary permissions for use and occupation, and other details are given without responsibility and any intending purchasers or tenants should not rely on them as statements or representations of fact but must satisfy themselves by inspection or otherwise as to the correctness of each of them; (iii) no person in the employment of the Directors of Lisney has any authority to make or give any representation or warranty whatever in relation to the property.

Lisney Commercial Real Estate

3rd Floor, Montgomery House,

29-33 Montgomery St., Belfast, BT1 4NX

Tel: 028 90 501 501

Email: property@lisney-belfast.com

[lisney.com](https://www.lisney.com)   

