

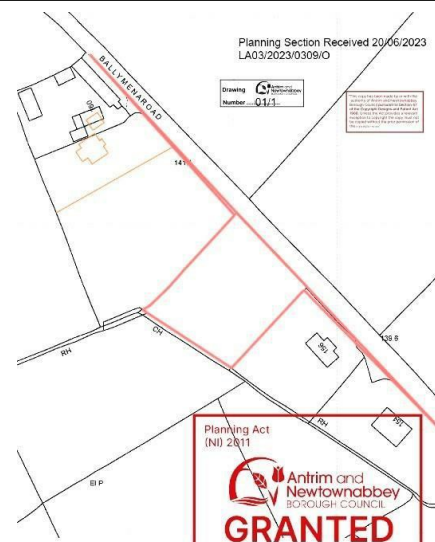


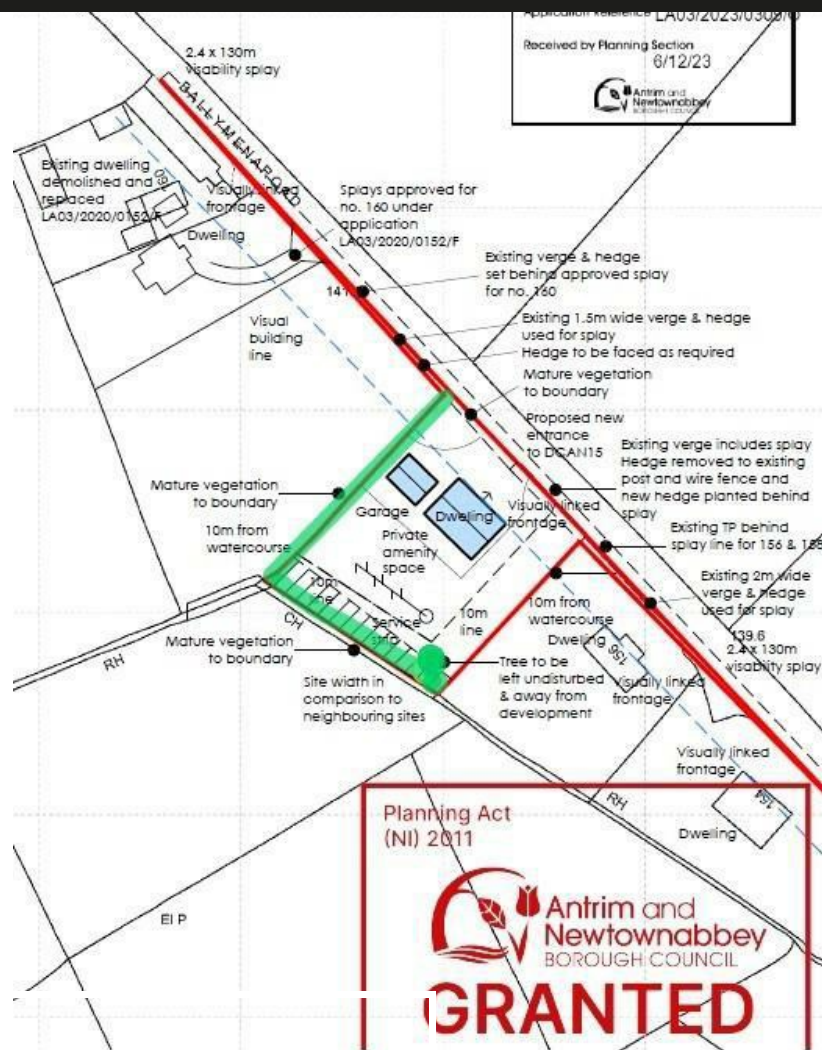
## Building Site 90m NW of 156 Ballymena Road, Doagh, Ballyclare, BT20 0TN

- c.0.5 Acre Building Site
- Single Dwelling And Garage
- Close Proximity To Surrounding Towns / Villages
- Outline Planning Permission
- Rural Views And Setting
- Plans And Maps Available On Request

Offers Over £84,950

EPC Rating





**COLIN  
GRAHAM  
RESIDENTIAL**  
**...WE SELL HOUSES**

## PROPERTY DESCRIPTION

### PLEASE NOTE:

Whilst every care has been taken to prepare these sales particulars, they are for guidance purposes only. All measurements are approximate and are for general guidance purposes only and whilst every care has been taken to ensure their accuracy, they should not be relied upon and potential buyers are advised to recheck the measurements and site boundaries.

[REDACTED]

[REDACTED]



**Opportunity to purchase a c.0.50 acre building site benefiting from outline planning permission (LA03/2023/0309/O), for a single dwelling and garage, enjoying rural views, located off Ballymena Road, Doagh, in close proximity to main commuter networks, Belfast International Airport, Antrim Area Hospital and surrounding towns/villages.**

**Copy of planning permission and maps are available upon request.**

**For further information or to arrange a viewing please contact Colin Graham Residential.**

**Early interest highly recommended to avoid disappointment.**



Energy Efficiency Rating		
	Current	Potential
Very energy efficient - lower running costs		
(92 plus) <b>A</b>		
(81-91) <b>B</b>		
(69-80) <b>C</b>		
(55-68) <b>D</b>		
(39-54) <b>E</b>		
(21-38) <b>F</b>		
(1-20) <b>G</b>		
Not energy efficient - higher running costs		
<b>Northern Ireland</b>	EU Directive 2002/91/EC	

Agents Note: Whilst every care has been taken to prepare these sales particulars, they are for guidance purposes only. All measurements are approximate and for general guidance purposes only and whilst every care has been taken to ensure their accuracy, they should not be relied upon and potential buyers are advised to recheck the measurements

**INVESTORS IN PEOPLE**  
We invest in people Gold

**PRS** Property Redress Scheme

Proudly sponsoring



Awards



**WE ARE MACMILLAN.**  
CANCER SUPPORT