



Bond
Oxborough
Phillips

Changing Lifestyles

8 Trerammet Crescent

Tintagel

PL34 0BN



BRITISH
PROPERTY
AWARDS

2023

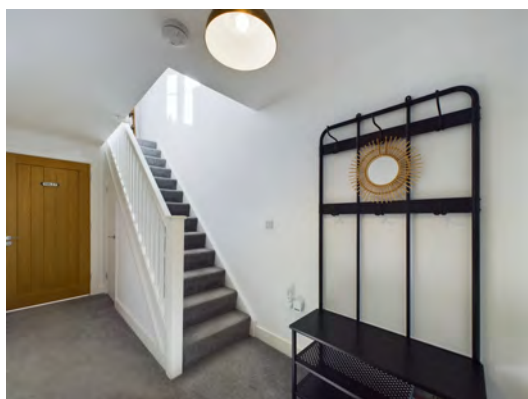


GOLD WINNER

ESTATE AGENT
IN WADEBRIDGE
& ROCK



Guide Price - £300,000



Changing Lifestyles

01208 814055

8 Trerammet Crescent, Tintagel, PL34 0BN



Bond Oxborough Phillips are delighted to introduce our latest instruction, a fantastic opportunity for...

- Impressive Semi-Detached Modern Home
- Family Bathroom & Downstairs W/C
- Stunning Views Of The Countryside
- Open Plan Living Space
- Practical Location
- Private Rear Decking
- Off-Road Parking
- EPC - C



Bond Oxborough Phillips are delighted to introduce our latest instruction, a fantastic opportunity for first time buyers, families or anyone who wants to reside in this ever popular historic village. Nestled in the charming village of Tintagel, this modern two-bedroom property epitomizes contemporary living with its immaculate finish throughout.

The ground floor welcomes you with a spacious open-plan kitchen/living area, creating an inviting and sociable space. The convenience of a well-appointed W/C adds to the functionality of the lower level. The highlight of the ground floor is the seamless transition to the back double doors that open onto a delightful decking area. This outdoor space, bathed in sunlight, serves as a private sun trap and offers stunning views of the surrounding countryside. Whether enjoying a morning coffee or entertaining guests, this area provides an idyllic setting for relaxation.



Ascend to the upper level, where two generously sized double bedrooms await. Each room is thoughtfully designed to maximize space and natural light, creating serene retreats for rest and rejuvenation. Complementing the bedrooms is a contemporary family bathroom, featuring modern fixtures and a tasteful design.

The property further enhances its appeal with the inclusion of parking, a valuable asset in this sought-after development. This residence not only promises a stylish and comfortable lifestyle but also provides a unique opportunity to be part of a thriving community in the popular village of Tintagel. The property has been used as a successful holiday let but would also make a fantastic family home.

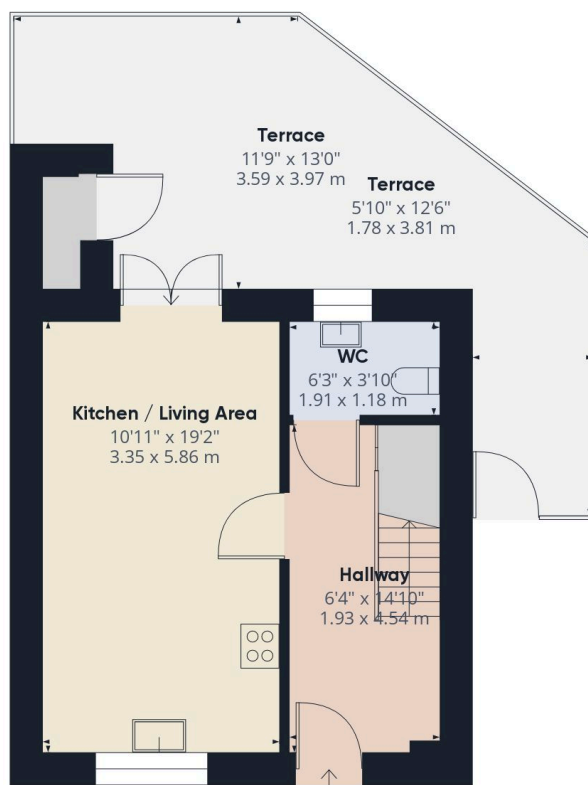
Changing Lifestyles



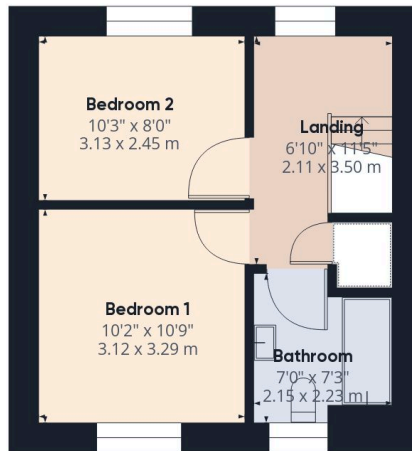
Please do not hesitate to contact the team at Bond Oxborough Phillips Sales & Lettings on **01208 814055** for more information or to arrange an accompanied viewing on this property.

Scan here for our Virtual Tour:





Floor 0



Floor 1

Have a property to sell or let?

If you are considering selling or letting your home, get in contact with us today on 01208 814055 to speak with one of our expert team who will be able to provide you with a free valuation of your home.

We have the facility to refer purchasers and vendors to conveyancing, mortgage advisors and Surveyors. It is your decision if you choose to deal with any of these companies however should you choose to use them we would receive a referral fee from them for recommending you. We will receive a referral fee between £50 - £300 depending on the company & individual circumstances. We have carefully selected these associates for the quality of their work and customer service levels.

Consumer Protection Regulations: We have not tested any apparatus, equipment, fixtures and fittings or services and so cannot verify that they are in working order or fit for the purpose. References to the Tenure of a Property are based on information supplied by the seller. We have not had sight of the Title Documents. A buyer is advised to obtain verification from their solicitor or surveyor. Floorplans shown are for guidance only and should not be relied upon. Items shown in photographs are NOT included unless specifically mentioned within these details. They may however be able by separate negotiation. You are advised to check the availability of this property before travelling any distance to view. Particulars are produced in good faith to the best of our knowledge and are set out as a general guide only.