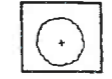
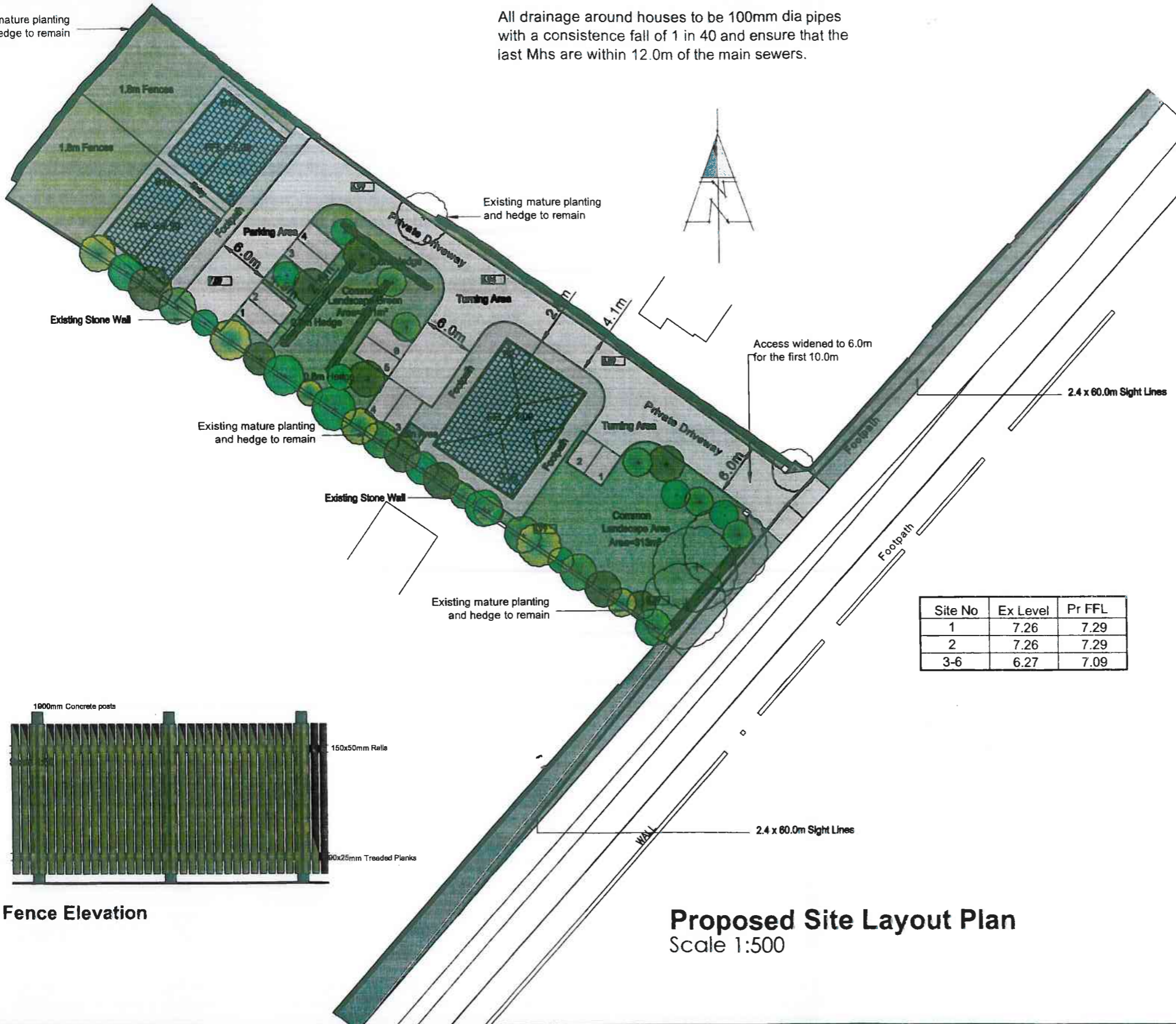


Existing mature planting and hedge to remain

All drainage around houses to be 100mm dia pipes with a consistence fall of 1 in 40 and ensure that the last Mhs are within 12.0m of the main sewers.



Existing trees/hedgerows to be retained



- Proposed amenity planting (low-medium):**
- Berberis thunbergii (300-400mm, CF, 3Lt, branched, 500mm ctrs)
 - Calluna vulgaris (CG, 2Lt, Bushy, 400mm ctrs)
 - Ceanothus 'Blue Mound' (300-400mm, CG, 3Lt, bushy, 500mm ctrs)
 - Choisya 'Aztec Pearl' (300-400mm, CG, 3Lt, bushy, 700mm ctrs)
 - Cotoneaster conspicuus 'Decorus' (300-400mm, CG, 3Lt, branched, 580mm ctrs)
 - Cotoneaster franchetii (300-400mm, CG, 2Lt, branched, 580mm ctrs)
 - Escallonia 'Apple Blossom' (300-400mm, CG, 2Lt, bushy, 580mm ctrs)
 - Euonymus fortunei 'Red Cascade' (600-800mm, CG, 3Lt, branched, 500mm ctrs)
 - Hebe Marjorie (300-400mm, CG, 3Lt, bushy, 500mm ctrs)
 - Hebe 'Midsummer Beauty' (300-400mm, CG, 3Lt, bushy, 500mm ctrs)
 - Hypericum x moserianum (300-400mm, CG, 3Lt, bushy, 580mm ctrs)
 - Hypericum 'Hidcote' (300-400mm, CG, 3Lt, bushy, 580mm ctrs)
 - Lavandula stoechas (200-300mm, CG, 3Lt, bushy, 500mm ctrs)
 - Mahonia aquifolium 'Apollo' (300-400mm, CG, 2Lt, branched, 580mm ctrs)
 - Potentilla 'Katherine Dykes' (200-300mm, CG, 3Lt, bushy, 580mm ctrs)
 - Prunus 'Otto Luyken' (300-400mm, CG, 3Lt, bushy, 580mm ctrs)
 - Skimmia japonica 'Rubella' (300-400mm, CG, 3Lt, bushy, 580mm ctrs)
 - Spiraea japonica 'Little Princess' (300-400mm, CG, 3Lt, bushy, 580mm ctrs)
 - Spiraea nipponica 'Snowmound' (400-600mm, CG, 3Lt, branched, 640mm ctrs)



Proposed trees:

Garden Tree Planting to create avenue
 Prunus 'Accolade' (Standard, 2.5-3.5m high, girth @ 1.0m:80-100mm, single clear straight stem up to 1.8m)

*All trees to be staked using double timber stakes with a timber cross member and 1 Nr. tree tie and spacer. Finished height of cross member to be 600mm

Other Tree Planting
 Sorbus 'Cardinal Royal' (Heavy Standard, 3.5-4.5m high, Girth @ 1.0m: 120-140mm, single clear straight stem up to 2m)
 Tilia cordata 'Streetwise' (Heavy Standard, 305-4.5m high, Girth @1.0m:120-140mm, Single clear straight stem up to 2m)

All trees to be staked using double timber stakes with a timber cross member and 1 Nr. Tree tie and spacer. Finished height of cross member to be 600mm



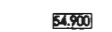
Proposed grass areas



1.8m High Garden Wall

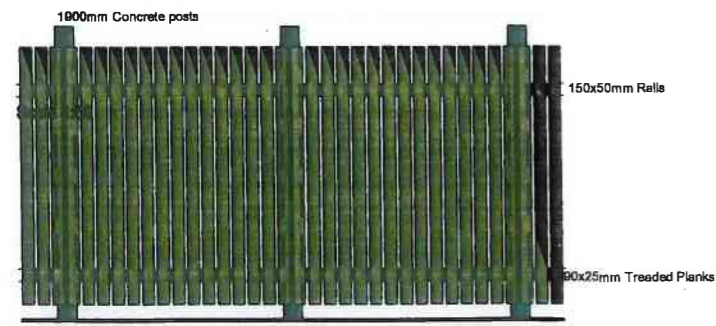


1.8m Timber Fence



Proposed Levels

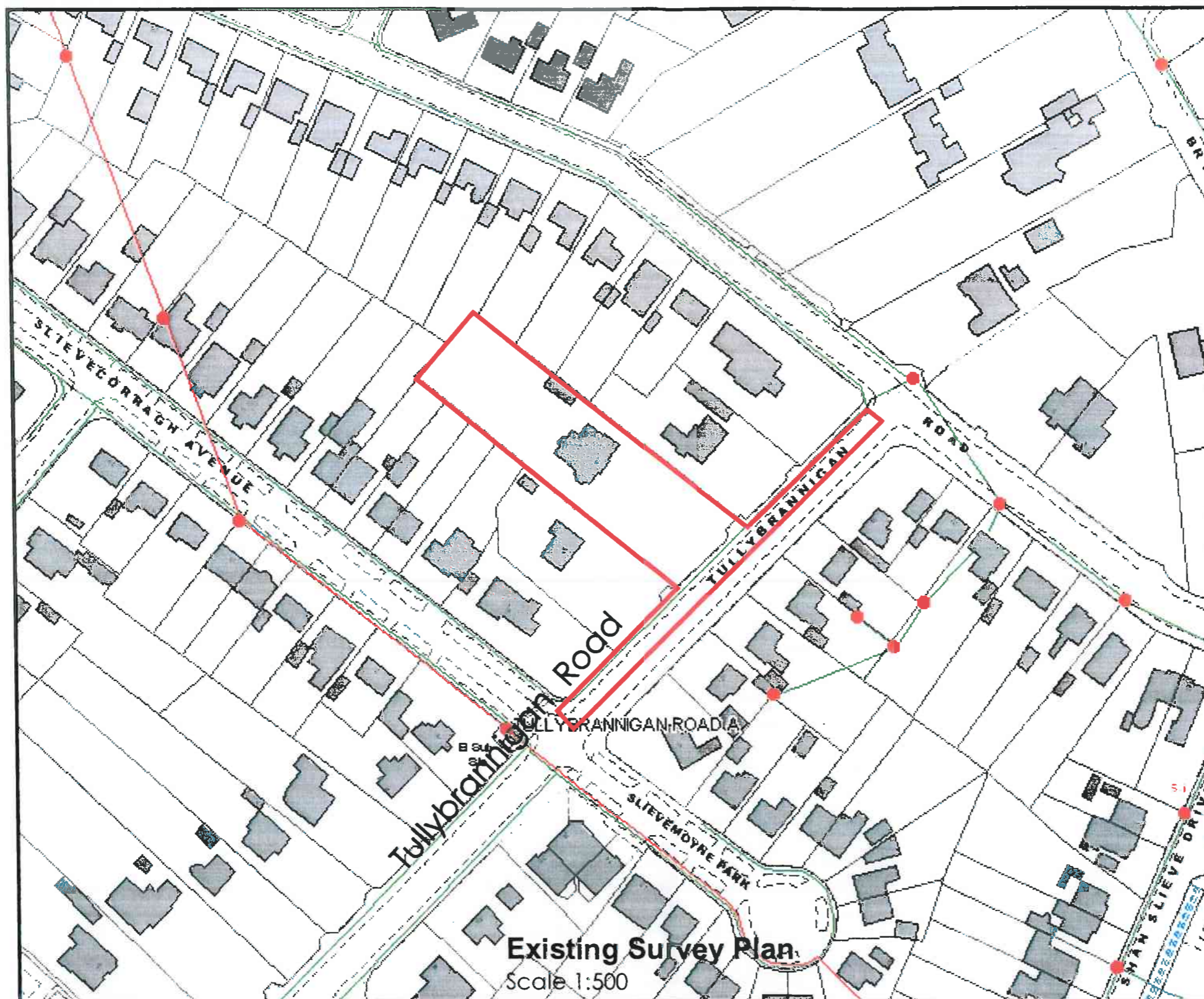
Site No	Ex Level	Pr FFL
1	7.26	7.29
2	7.26	7.29
3-6	6.27	7.09



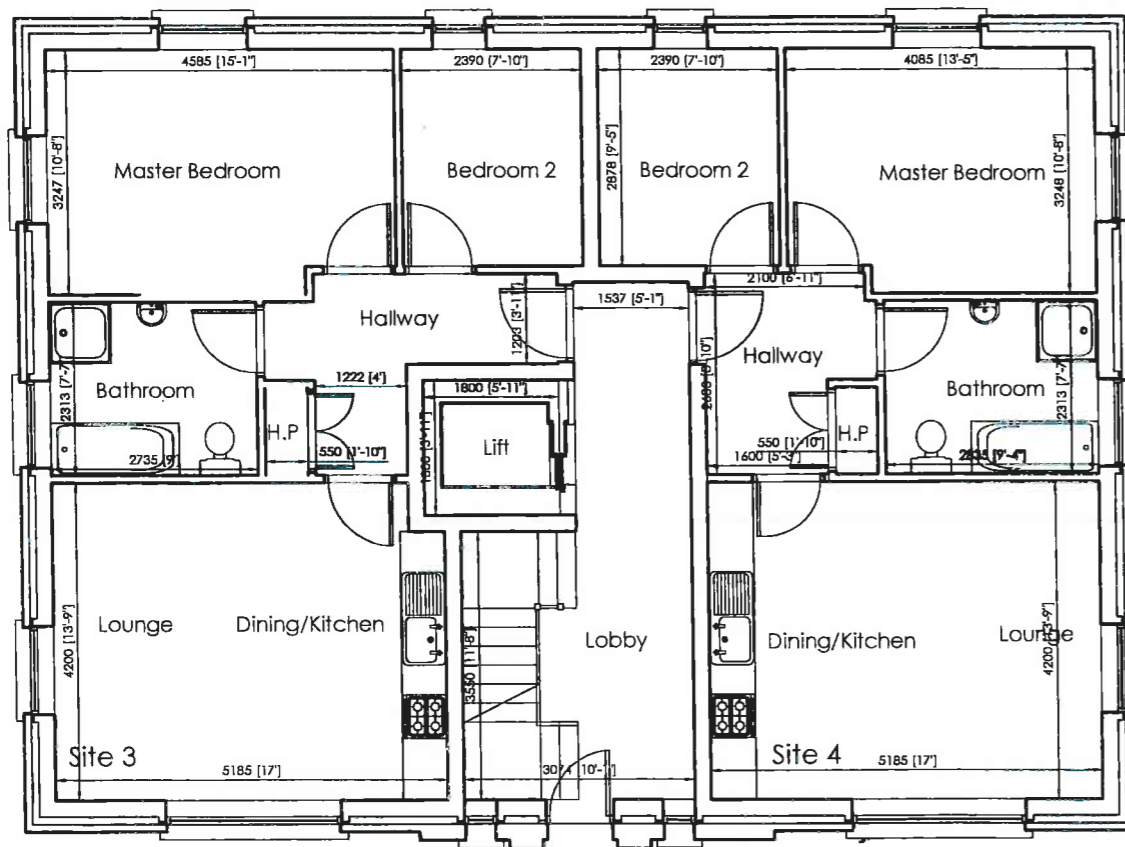
Fence Elevation

Proposed Site Layout Plan
 Scale 1:500

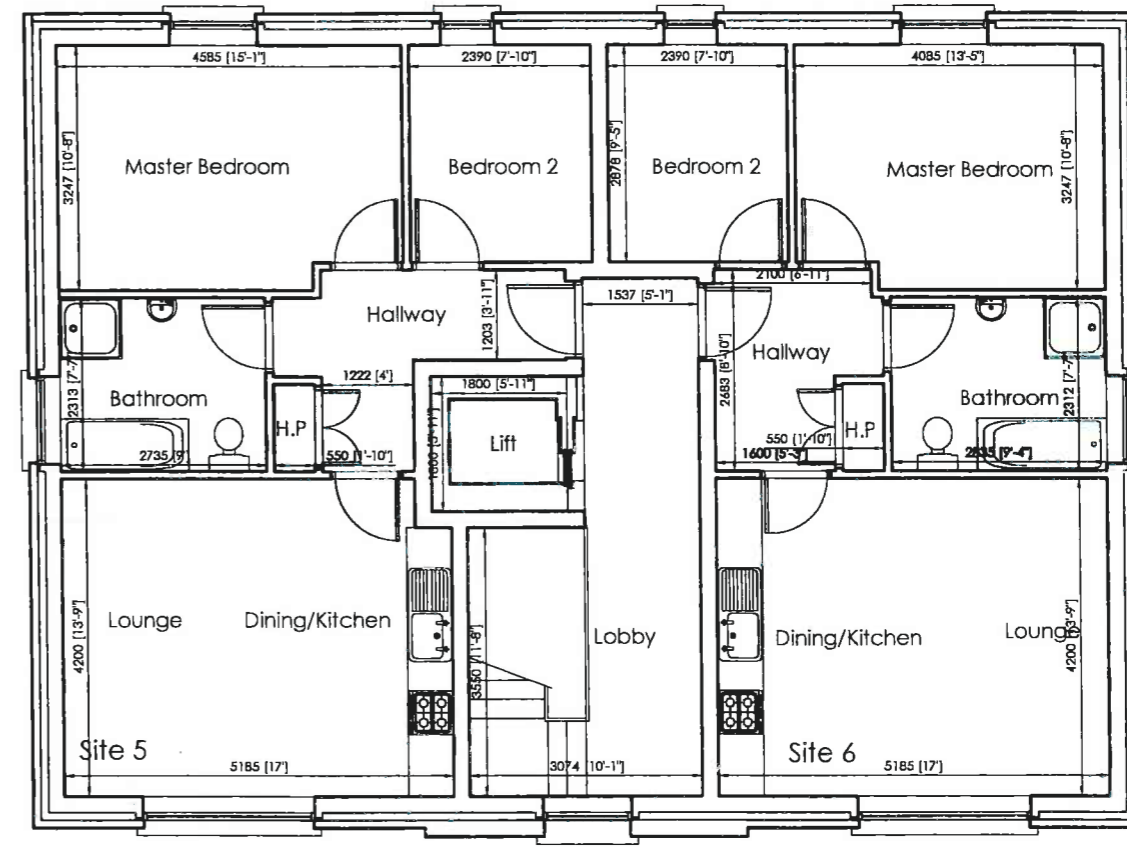
OSNI LICENCE NUMBER 2090



REPRODUCED FROM THE 2007 ORDNANCE SURVEY OF NORTHERN IRELAND . MAP WITH THE PERMISSION OF THE CONTROLLER OF HER MAJESTYS STATIONARY OFFICE, © CROWN COPYRIGHT 2005

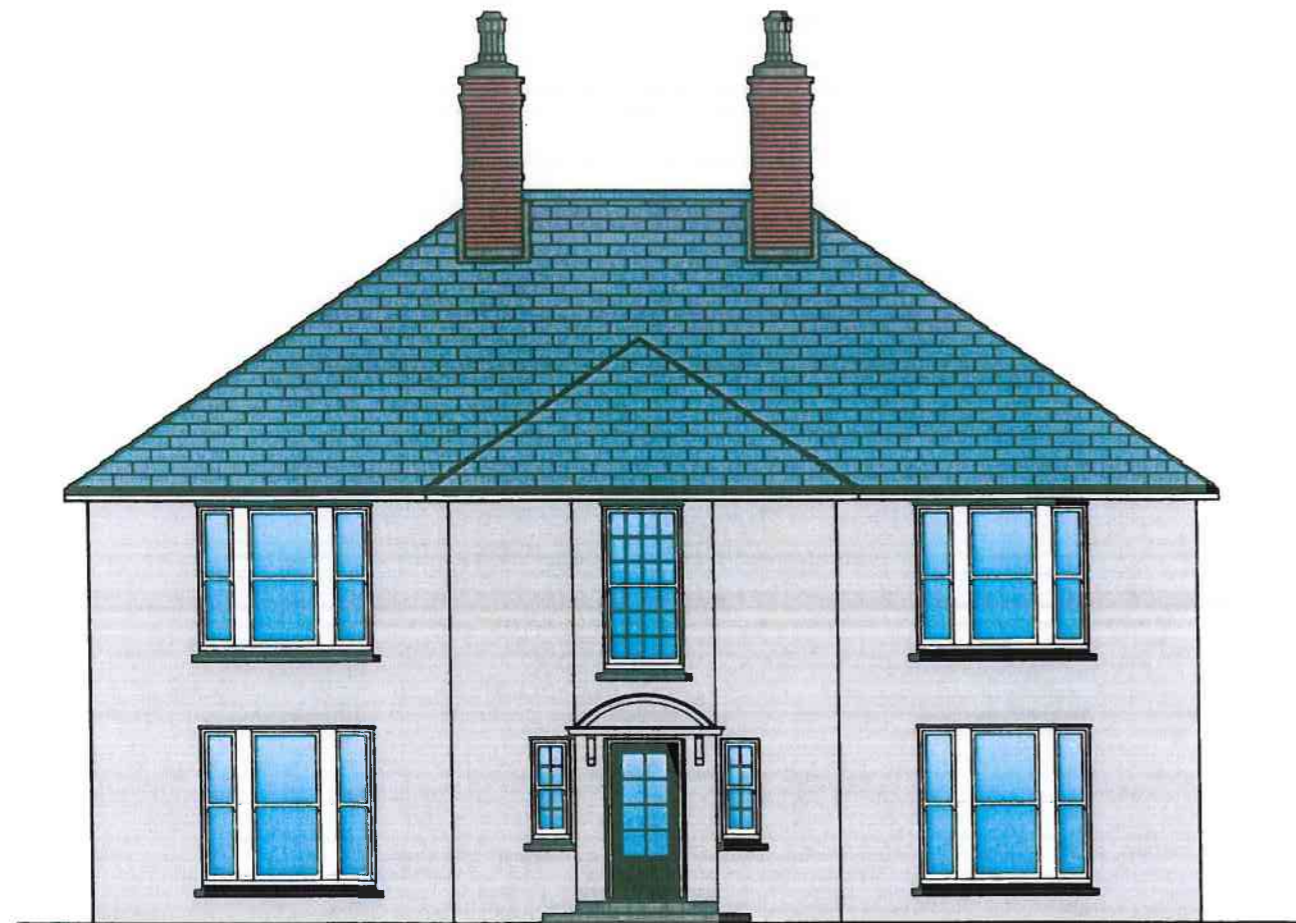


GROUND FLOOR PLAN

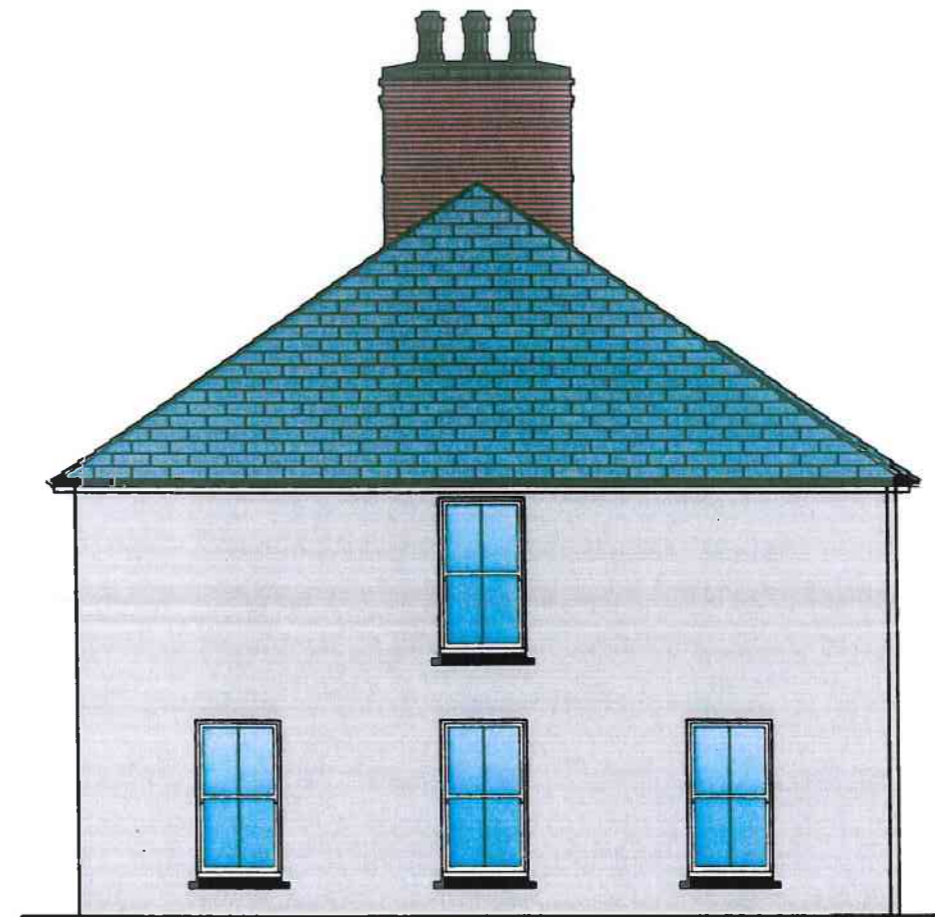


FIRST FLOOR PLAN

- Finishes:**
Roof: Dark Blue Slate or Black Tiles
Windows: Painted Timber (From sustainable source) Sliding Sash Windows
Doors: Hardwood, painted
Rainwater Goods: Black PVC
Walls: Painted smooth plaster
Chimney: Red Rustic Brick



FRONT ELEVATION SITE 3-6



SIDE ELEVATION

Painted Timber Sliding Sash Windows with Sand Blasted Glass To Bathrooms

Finishes:
Roof: Dark Blue Slate or Black Tiles
Windows: Painted Timber (From sustainable source) Sliding Sash Windows
Doors: Hardwood, painted
Rainwater Goods: Black PVC
Walls: Painted smooth plaster
Chimney: Red Rustic Brick



REAR ELEVATION



SIDE ELEVATION

Painted Timber Sliding
Sash Windows with Sand
Blasted Glass To Bathrooms