

THE KEIGHTLEY

TOTAL FLOOR AREA 1,273 ft² approx.



WALLACE
GARDENS

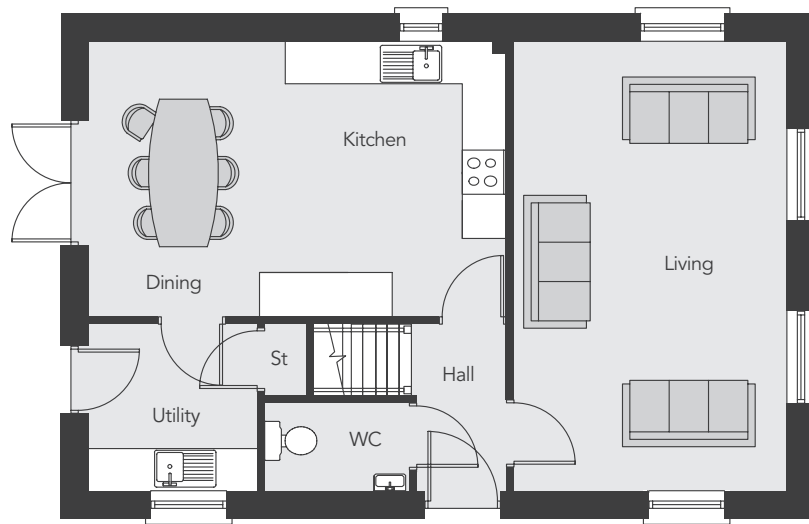
THAXTON VILLAGE - LISBURN



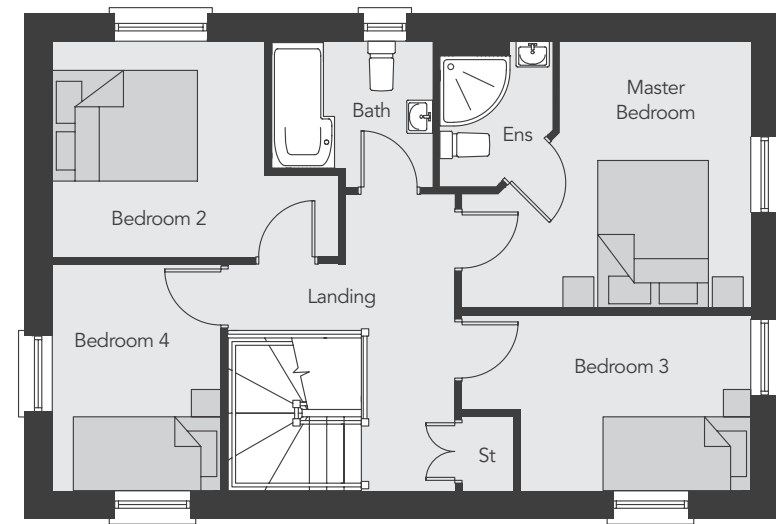
Computer visual.

THE KEIGHTLEY

TOTAL FLOOR AREA 1,273 ft² approx.



GROUND FLOOR



FIRST FLOOR

GROUND FLOOR

Entrance Hall	
Living (max)	19'11" x 12'1"
Kitchen / Dining	18'7" x 12'3"
Utility	7'6" x 7'4"
WC	6'5" x 3'10"

FIRST FLOOR

Master Bed (max)	12'9" x 11'10"
Ensuite (max)	5'9" x 5'0"
Bedroom 2 (max)	12'8" x 9'7"
Bedroom 3 (max)	12'9" x 7'9"
Bedroom 4	10'0" x 7'6"
Bathroom	7'1" x 6'5"



Colliers New Homes
25 Talbot Street, Belfast BT1 2LD
Telephone 028 9024 4000
www.colliersni.com