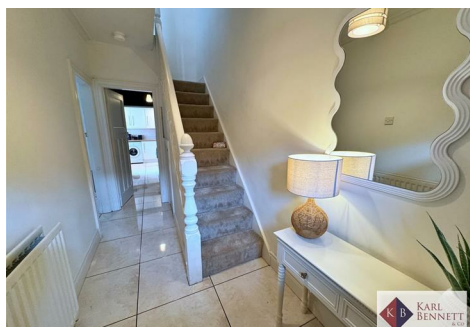
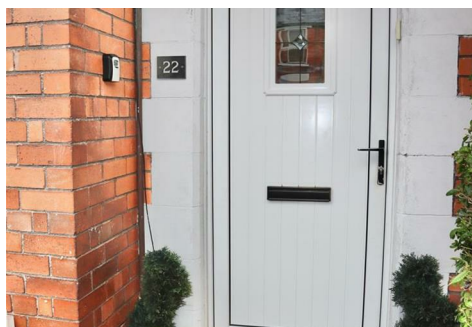


KARL
BENNETT
& CO

Go For Sold



22 Eastleigh Crescent, Belfast, BT5 6HT

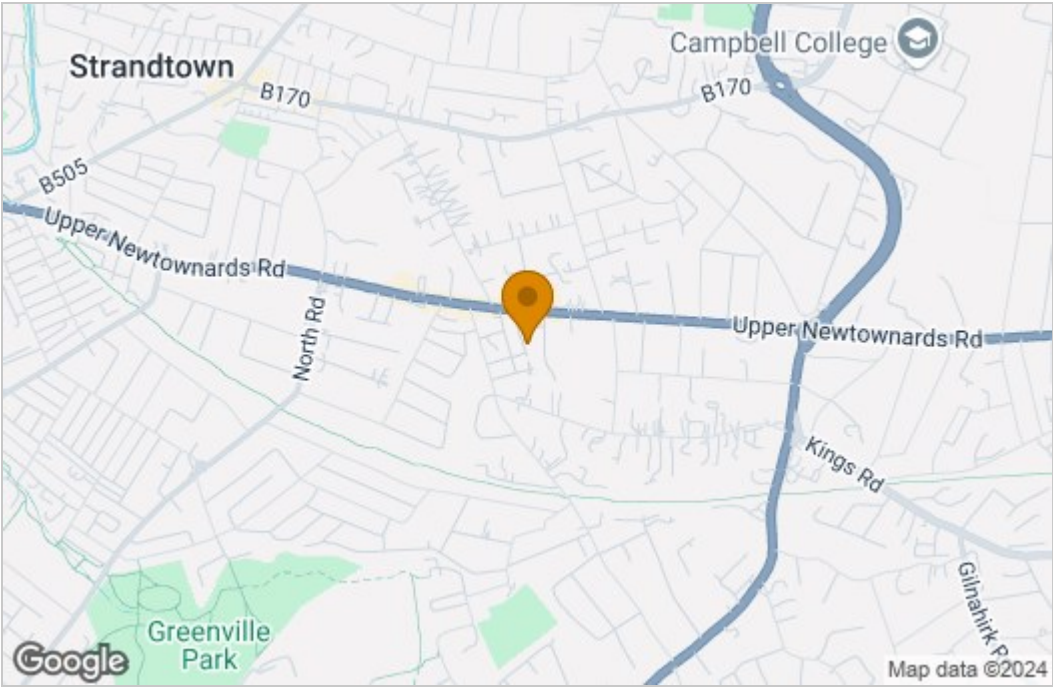
£1,200 Per month

- Mid terrace property
- Bright lounge/diner
- Modern Fitted Kitchen with appliances
 - Three bedrooms
- Bathroom with a three piece white suite
 - Gas fired central heating
 - Upvc double glazed windows
 - Popular residential location
 - Available early October 2024

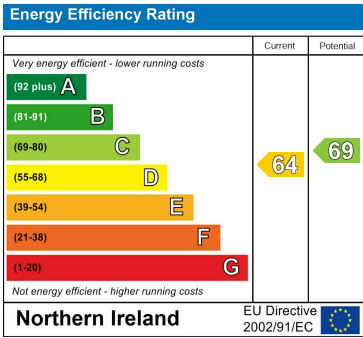
DISCLAIMER

These particulars, whilst believed to be accurate are set out as a general outline only for guidance and do not constitute any part of an offer or contract. Intending purchasers should not rely on them as statements of representation of fact, but must satisfy themselves by inspection or otherwise as to their accuracy. No person in the employment of Karl Bennett & Company has the authority to make or give any representation or warranty in respect of the property.

Area Map



Energy Efficiency Graph



These particulars, whilst believed to be accurate are set out as a general outline only for guidance and do not constitute any part of an offer or contract. Intending purchasers should not rely on them as statements of representation of fact, but must satisfy themselves by inspection or otherwise as to their accuracy. No person in this firms employment has the authority to make or give any representation or warranty in respect of the property.