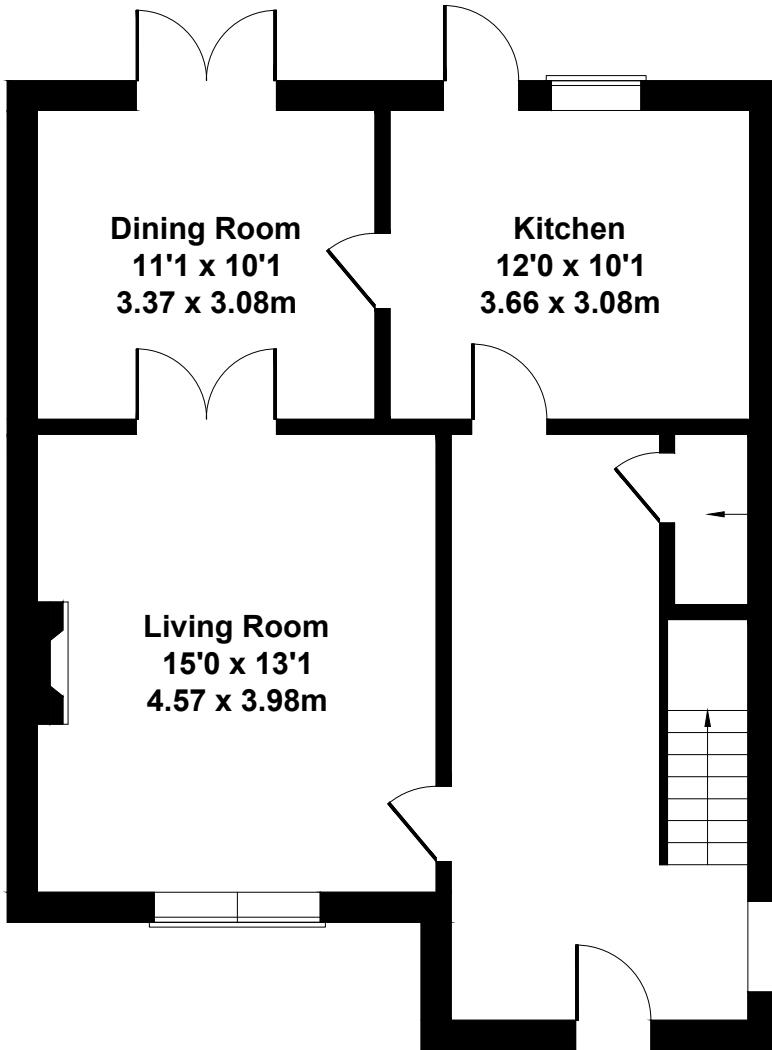
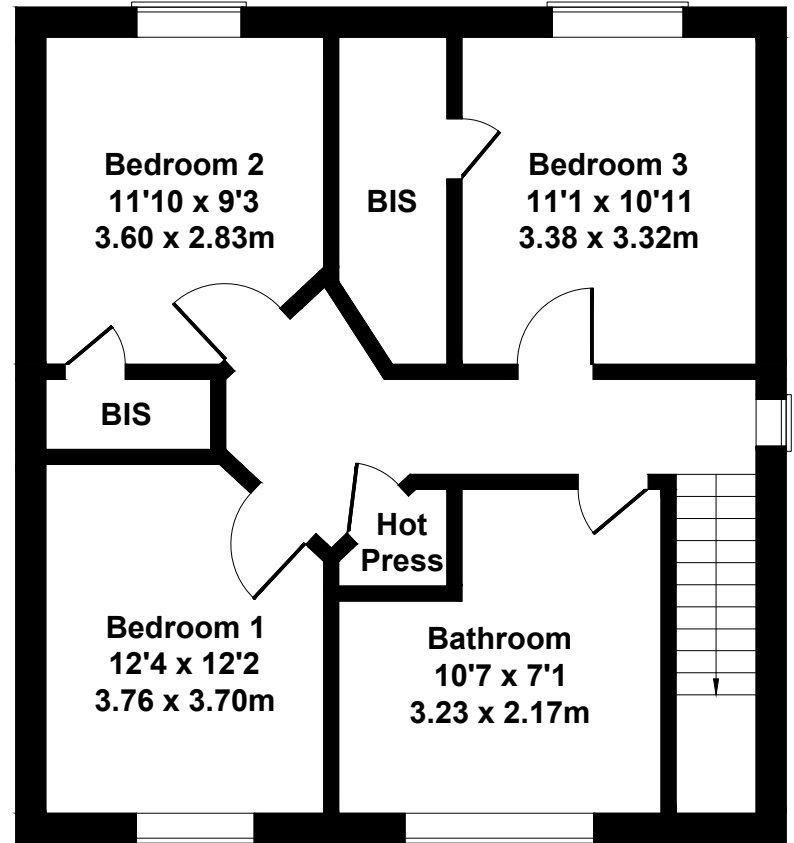


78 Fortview Park, Kesh, BT93 1TD

Approximate Gross Internal Area
1227 sq ft - 114 sq m



GROUND FLOOR



Separate WC
5'7 x 2'3
1.70 x 0.69m

FIRST FLOOR

Not to Scale, all measurements, walls, windows, fittings and
appliance's locations, are approximate only
For Illustrative Purposes Only.