

35 Seaview Drive , Belfast, BT15 3NB

Offers Around £95,000

Extended Town Terrace In This Most Popular Section Of Seaview Drive.

Holding a prime position within this most popular section of Seaview Drive, this attractive red brick double fronted extended town terrace offers unlimited potential. The spacious interior comprises 2 bedrooms, 2 reception rooms, extended fitted kitchen and bathroom in white suite complete with electric shower. The dwelling further offers oil fired central heating, upvc double glazed windows and exterior doors, wood laminate and ceramic floor coverings and offers superb potential. A southerly aspect to the rear garden combines with the most convenient location with leading schools, public transport and excellent local shopping all close by.

Immediate Inspection Highly Recommended.

Energy Efficiency Rating		Current	Potential
Very energy efficient - lower running costs			
(92 plus) A			
(81-91) B			
(69-80) C			71
(55-68) D			
(39-54) E		41	
(21-38) F			
(1-20) G			
Not energy efficient - higher running costs			
Northern Ireland		EU Directive 2002/91/EC	

35 Seaview Drive

, Belfast, BT15 3NB



- Extended Double Fronted Town Terrace
- Bathroom In White Suite
- Upvc Double Glazed Windows
- 2 Bedrooms 2 Reception Rooms
- Oil Fired Central Heating
- Pvc Facia And Eaves
- Extended Fitted Kitchen
- Excellent Rear Garden

Entrance Hall

Upvc double glazed entrance door.

Lounge

13'6" x 10'2" (4.13 x 3.10)

Double panelled radiator, wood laminate floor, hole-in wall fireplace.

Dining Room

14'3" x 7'4" (4.35 x 2.24)

Wood laminate floor, panelled radiator. Under stair storage.

Extended Kitchen

13'7" x 7'3" (4.15 x 2.23)

Single drainer stainless steel sink unit, range of high and low level units, formica worktops, cooker space, plumbed for washing machine, fridge/freezer space, partly tiled walls, ceramic tiled floor, upvc double glazed rear door, panelled radiator.

First Floor

Landing, panelled radiator.

Bedroom

14'7" x 10'0" (4.46 x 3.05)

Panelled radiator.

Bedroom

9'1" x 7'10" (2.79 x 2.41)

Panelled radiator.

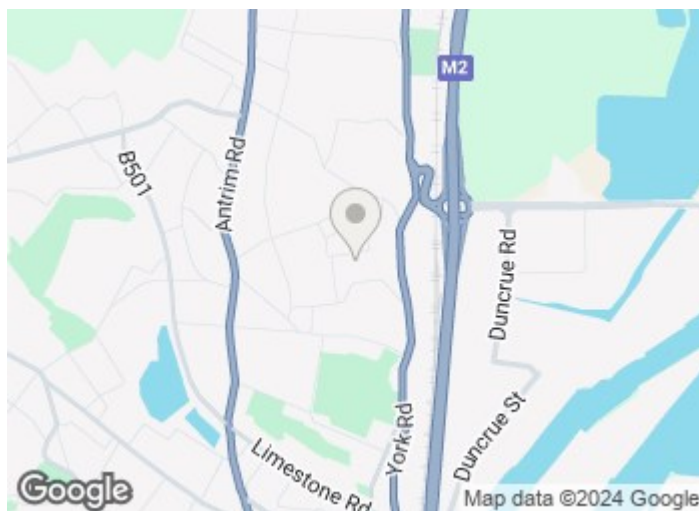
Bathroom

White suite comprising shower cubical, electric shower, pedestal wash hand basin, low flush wc, fully tiled, ceramic tiled floor, feature radiator.

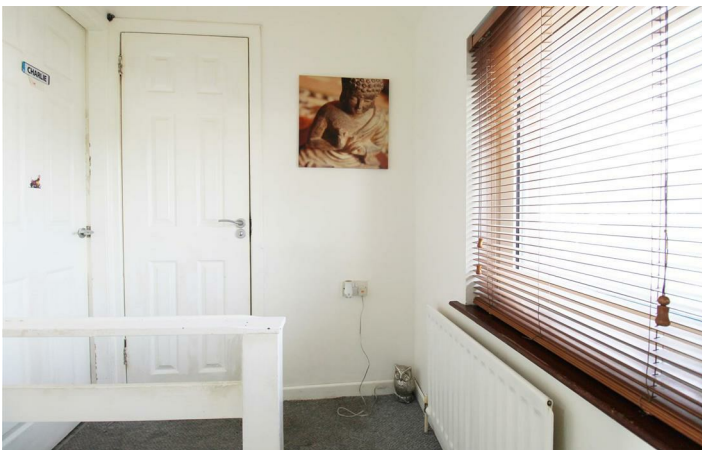
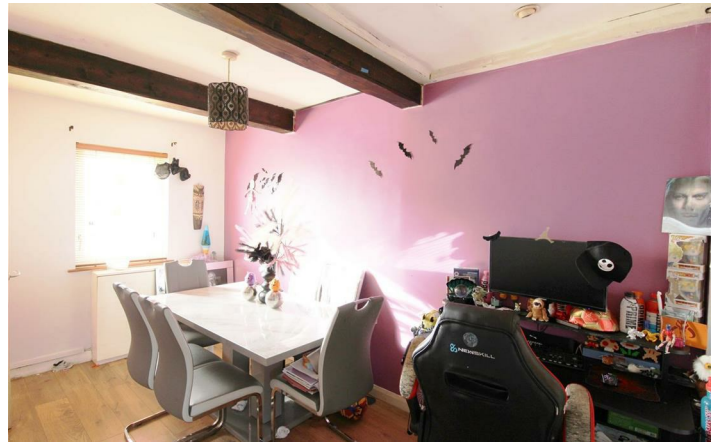
Outside

Gardens front and rear in patio, boiler house oil boiler, oil tank

Wooden Garage

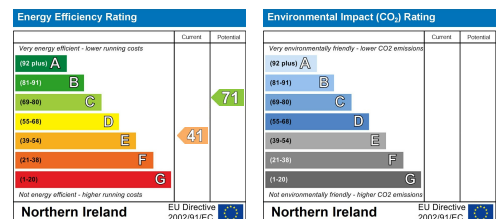


Directions



Floor Plan

These particulars, whilst believed to be accurate are set out as a general outline only for guidance and do not constitute any part of an offer or contract. Intending purchasers should not rely on them as statements of representation of fact, but must satisfy themselves by inspection or otherwise as to their accuracy. No person in this firm's employment has the authority to make or give any representation or warranty in respect of the property.



ULSTERPROPERTYSALES.CO.UK

ANDERSONSTOWN
028 9060 5200

BALLYNAHINCH
028 9756 1155

CAUSEWAY COAST
0800 644 4432

FORESTSIDE
028 9064 1264

NEWTOWNARDS
028 9181 1444

BALLYHACKAMORE
028 9047 1515

BANGOR
028 9127 1185

CAVEHILL
028 9072 9270

GLENGORMLEY
028 9083 3295

RENTAL DIVISION
028 9070 1000

BALLYMENA
028 2565 7700

CARRICKFERGUS
028 9336 5986

DOWNPATRICK
028 4461 4101

MALONE
028 9066 1929



John McLarnon trading under licence as Ulster Property Sales (Cavehill)
©Ulster Property Sales is a Registered Trademark