

Tim Martin
— .co.uk



66 Lisburn Road
Saintfield
BT24 7BP

Offers Around
£259,950

www.timmartin.co.uk
Telephone 028 97 568300

SUMMARY

Set on the edge of the countryside, this well presented detached property occupies a spacious site with beautiful rural views yet perfectly situated within walking distance of Saintfield village.

The accommodation is bright and spacious throughout and is ideally suited towards the growing or established families. The ground floor enjoys a spacious lounge with beautiful red brick fireplace and open fire, family room or fourth bedroom, modern fitted kitchen with casual dining area and utility room, whilst the first floor enjoys three excellent sized bedrooms and family bathroom, fitted with a modern white suite.

The property is further enhanced by oil fired central heating, double glazing and a spacious gravelled driveway that leads to the attached garage/store. Well maintained gardens are located to the front and rear with a spacious paved patio area, all of which enjoy views over the surrounding countryside.

Saintfield village is renowned for its wealth of local boutiques, coffee shops, restaurants and an excellent range of primary and secondary schools – all of which are within close proximity. For those wishing to commute, Downpatrick, Lisburn and Belfast are all within convenient commuting distance making this the ideal location for those wanting the semi rural life with convenience in mind!

FEATURES

- Well Presented Detached Family Home Set On The Edge Of The Countryside
- Three Excellent Sized Bedrooms
- Spacious Lounge With Open Fire
- Family Room Or Fourth Bedroom
- Modern Fitted Kitchen With Dining Area And Utility Room
- Family Bathroom With Modern White Suite
- Oil Fired Central Heating And Double Glazing
- Spacious Gravelled Driveway Leading To Attached Garage / Store
- Gardens Laid Out In Lawn With Spacious Patio Overlooking Surrounding Countryside
- Within Walking Distance To Saintfield Village, Schools And Public Transport Convenient Commute To Lisburn, Downpatrick And Belfast

Entrance Hall

Glazed PVC entrance door; wood laminate floor.

Lounge

22'0 x 12'9 (6.71m x 3.89m)

Beautiful red brick fireplace with open fire; slate hearth and wooden mantle; tv aerial connection point.

Family Room / Bedroom 4

11'9 x 10'9 (3.58m x 3.28m)

Kitchen / Dining Area

15'8 x 10'10 (4.78m x 3.30m)

Good range of painted finish high and low level cupboards and drawers incorporating single drainer stainless steel sink unit with swan neck mixer taps; integrated 'Bush' electric under oven with 'Beko' 4 ring ceramic hob; extractor hood with curved glass inset over; wood laminate worktops; tiled splash back; tile effect laminate floor.

Utility Room

10'10 x 5'10 (3.30m x 1.78m)

Space and plumbing for washing machine and tumble dryer; space for fridge freezer; laminate worktops; tiled effect laminate floor; glazed PVC door to rear.

Open Tread Staircase Leading To First Floor

Landing

Access to roofspace; hotpress with insulated copper cylinder; built-in storage cupboard

Bedroom 1

12'9 x 10'10 (3.89m x 3.30m)

Bedroom 2

19'5 x 11'10 (5.92m x 3.61m)

Built-in sliding robes.

Bedroom 3

12'10 x 8'2 (3.91m x 2.49m)

Wood laminate floor.

Bathroom

9'8 x 5'10 maximum measurements (2.95m x 1.78m maximum measurements)

Modern white suite comprising, panel bath with pillar mixer taps; thermostatically controlled shower unit with wall mounted telephone shower attachment; fitted curved glass shower screen; dual flush wc; pedestal wash hand basin with mono mixer tap; tiled floor and walls; chrome towel radiator.

Outside

Gravelled driveway providing excellent parking for several cars, caravan, boat etc; leading to:-

Garage / Store

21'10 x 10'9 (6.65m x 3.28m)

'Reillo' oil fired boiler; access to rear; light and power points.

Gardens

Front gardens laid out in lawn and planted with mature hedging; open aspect; fully enclosed rear gardens laid out in lawns; paved patio area; stunning views over the surrounding countryside; outside water tap; PVC oil storage tank.

Store 1

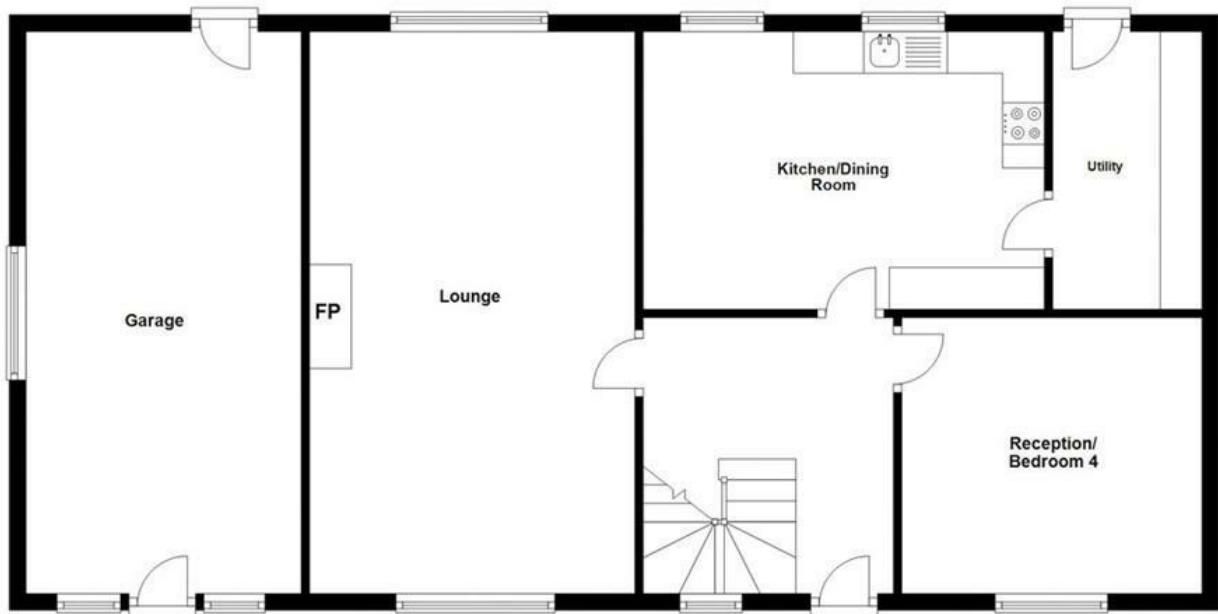
Store 2

Capital / Rateable Value

£210,000 = Rates Payable £1941.03 per annum (approximately)

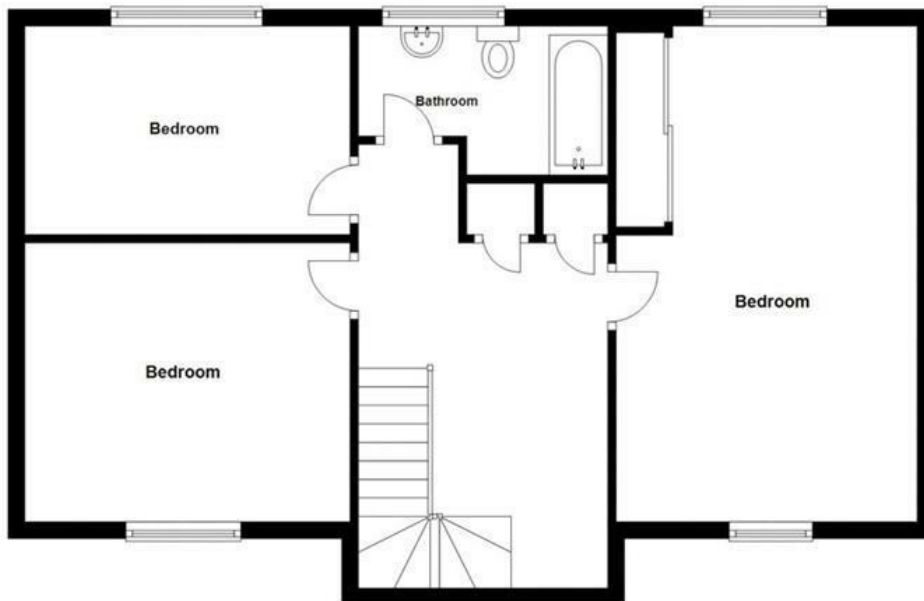
Ground Floor

Approx. 94.9 sq. metres (1021.9 sq. feet)



First Floor

Approx. 66.0 sq. metres (710.3 sq. feet)

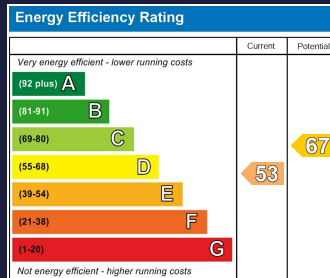
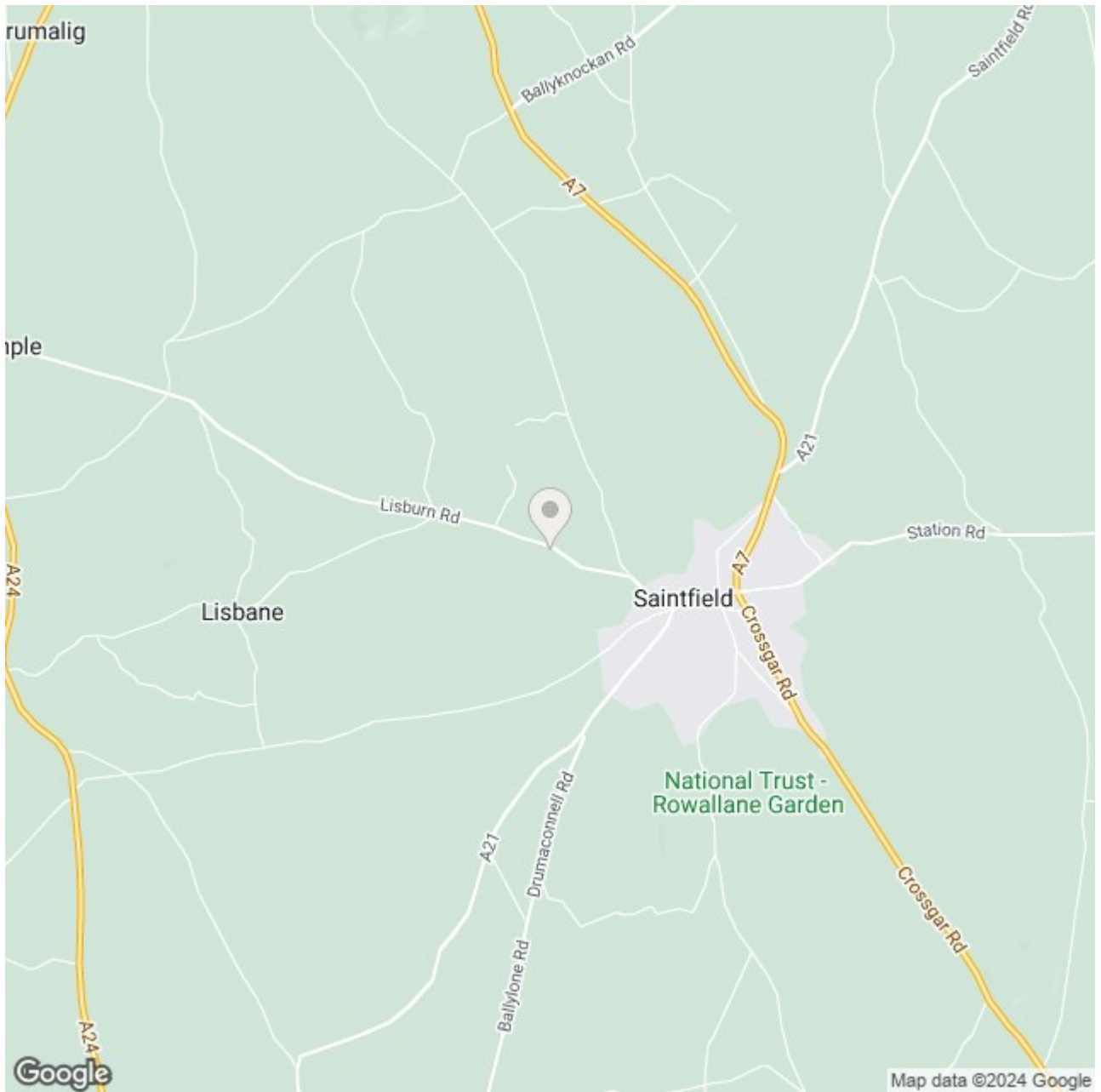


Total area: approx. 160.9 sq. metres (1732.2 sq. feet)









Saintfield
 1B Main Street, Saintfield, BT24 7AA
 T 028 97 568300

Comber
 27 Castle Street, Comber, BT23 5DY
 T 028 91 8789596

Tim Martin & Company for themselves and for the vendors of this property have endeavoured to prepare these sales details as accurate and reliable as possible for the guidance of intending purchasers or lessees. These particulars are given for general guidance only and do not constitute any part of an offer or contract. The seller and us as agents, do not make any representation or give any warranty in relation to the property. We would recommend that all information contained in this brochure about the property be verified by yourself or professional advisors. Services, fittings and equipment referred to in the sales details have not been tested (unless otherwise stated) and no warranty will be given as to their condition. All measurements contained within this brochure are approximate. Please contact us prior to viewing the property. If there is any point of particular importance to you we would be pleased to provide additional information or make further enquiries. We will also confirm that the property remains available. This is particularly important if you are contemplating travelling some distance to view the property.