

MARC FEGAN
BESPOKE ESTATE AGENT



18 Gosselin Drive, Craigavon, BT66 6JZ
Offers in the region of £249,950



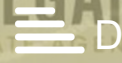
4



2



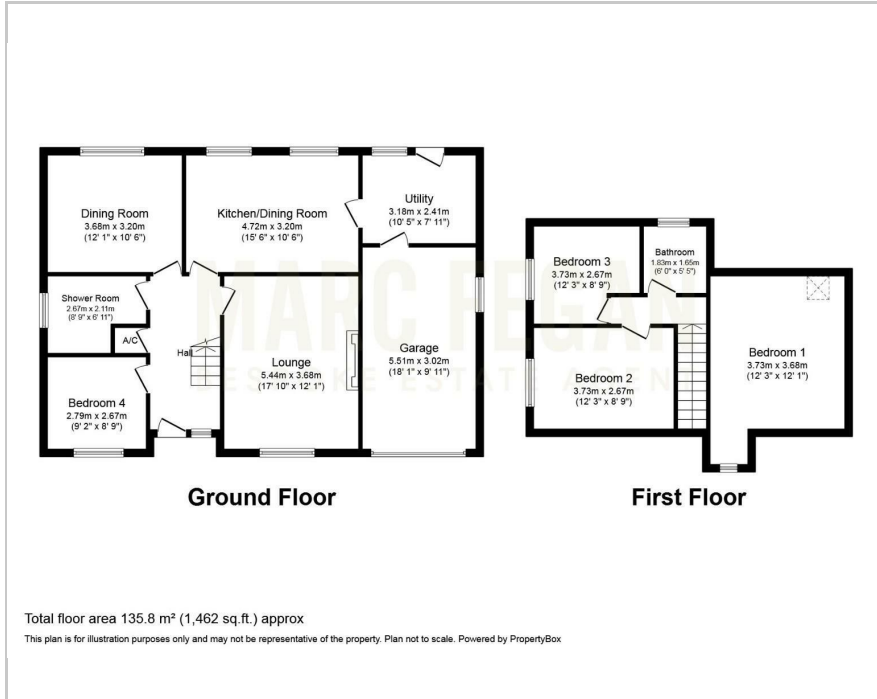
2



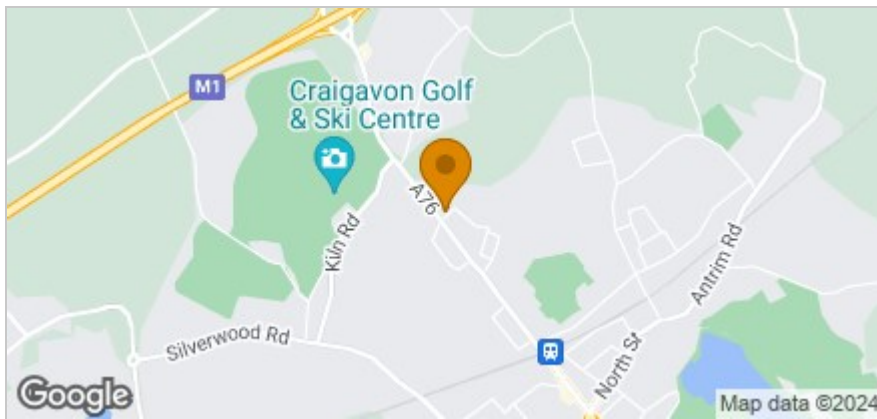
D

MARC FEGAN
BESPOKE ESTATE AGENT

Floor Plan



Area Map



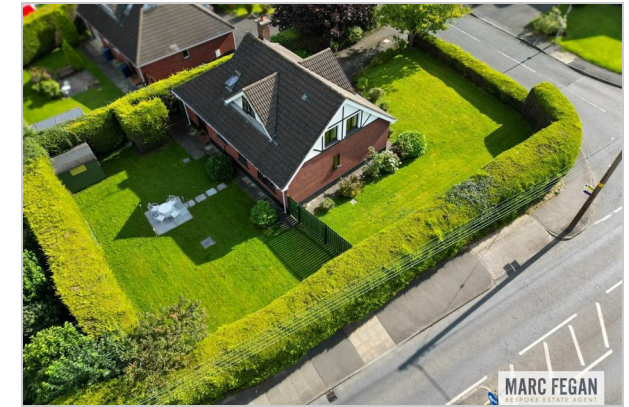
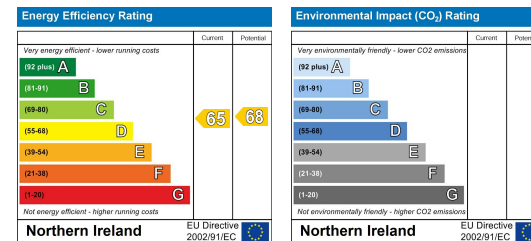
Accommodation

- Beautiful Detached Chalet Bungalow Set On A Spacious & Private Site
- Highly Sought After & Convenient Location
- Four Bedrooms, Two Reception Rooms & Two Bathrooms
- Integral Garage & Spacious Utility Room
- Stunning Gardens
- Recently Installed Bathroom, Shower Room & Gas Heating
- Prestigious Lough Road Area
- Double Glazed Windows & Gas Heating
- Easy Access To M1 Motorway & Railway Station For Commuters
- Local Schools & Amenities Located Nearby

Viewing

Please contact our Marc Fegan Bespoke Estate Agent Office on 02838894608 if you wish to arrange a viewing appointment for this property or require further information.

Energy Efficiency Graph



These particulars, whilst believed to be accurate are set out as a general outline only for guidance and do not constitute any part of an offer or contract. Intending purchasers should not rely on them as statements of representation of fact, but must satisfy themselves by inspection or otherwise as to their accuracy. No person in this firm's employment has the authority to make or give any representation or warranty in respect of the property.