

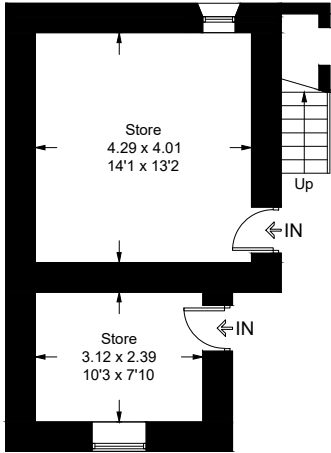
Cruit Island Lower

Approximate Gross Internal Area = 114.6 sq m / 1233 sq ft

Cottage = 47.9 sq m / 515 sq ft

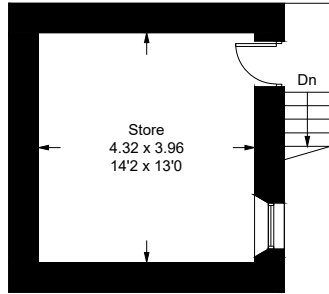
Outbuildings = 140.9 sq m / 1517 sq ft

Total = 303.4 sq m / 3265 sq ft

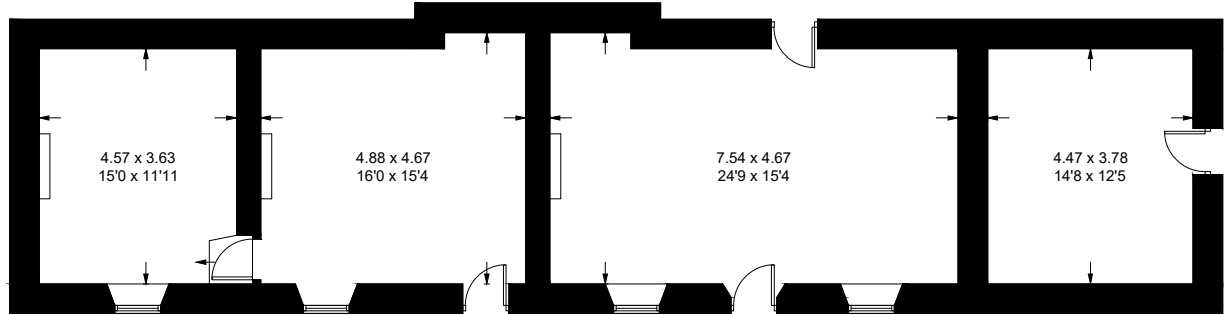


Ground Floor

(Not Shown In Actual Location / Orientation)

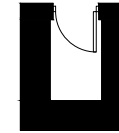


First Floor



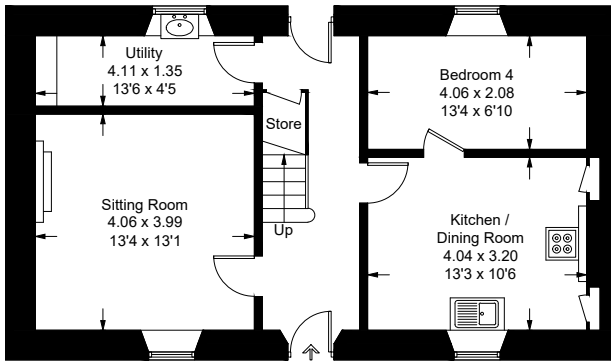
Outbuilding

(Not Shown In Actual Location / Orientation)

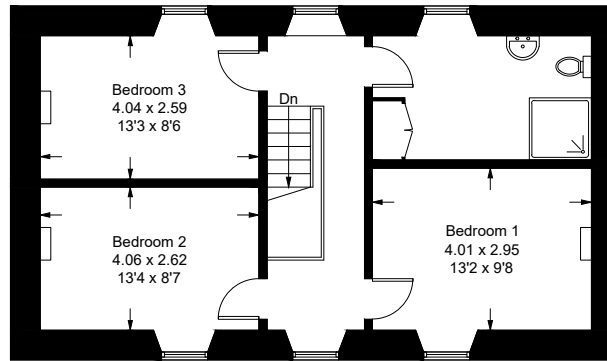


Outhouse

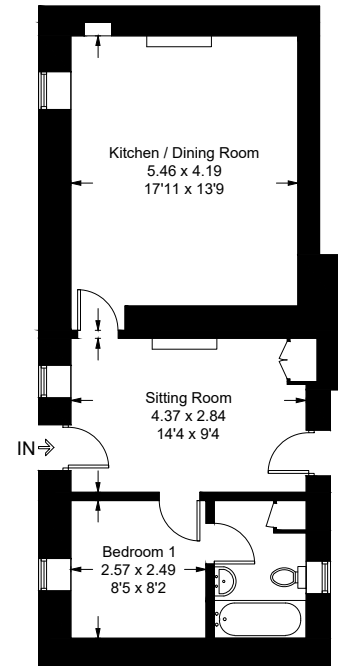
(Not Shown In Actual Location / Orientation)



Ground Floor



First Floor



Cottage

(Not Shown In Actual Location / Orientation)

Illustration for identification purposes only, measurements are approximate, not to scale. floorplansUsketch.com © (ID1003070)