

49 Richardson Street

Ravenhill, BT6 8DX

Cowley



Price: OA £130,000

A spacious mid terrace with an original return to the rear.

- Entrance hall with laminate floor
- Attractive through lounge with laminate floor and part cornice ceiling
- Fitted kitchen incorporating built in oven and hob with utility area off
- 2 Spacious bedrooms
- Deluxe bathroom incorporating electric shower and screen
- PVC double glazed windows
- Gas fired central heating
- Spacious enclosed yard incorporating feature decking with covered area
- Garden area to front

A unique row of terrace housing which is very different from the surrounding property. You will be amazed at the spaciousness of this ideal starter home that enjoys a character and charm from the era in which it was built. We recommend immediate viewing to appreciate the many features of this superb property.

OPEN ENTRANCE PORCH:

ENTRANCE HALL:

Laminate floor.

THROUGH LOUNGE:

21'7" x 11'0" laminate floor, part cornice ceiling.



KITCHEN:

13'3" x 7'3" single drainer stainless steel sink unit, mixer taps, range of built in units, built in oven and hob, stainless steel extractor hood, low voltage lighting,



UTILITY AREA BEYOND:

Incorporating plumbed for washing machine, low voltage lighting.

FIRST FLOOR

BEDROOM 1:

14'8" x 10'7"



BEDROOM 2:

10'5" x 8'10"

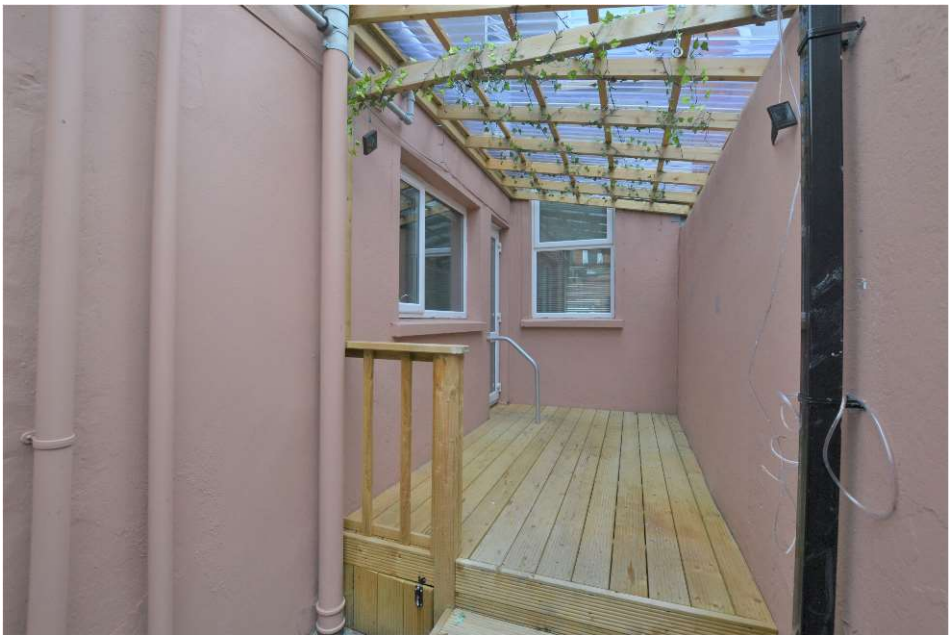
BATHROOM:

Paneled bath, electric shower, shower screen, pedestal wash hand basin, low flush w.c.



OUTSIDE:

Enclosed yard with feature raised decked area. Garden area to front.



East Belfast Office
36 Cregagh Road, Belfast, BT6 9EQ
T: 028 9045 1248 F: 028 9073 9096

E: info@cowleyproperty.com
W: www.cowleyproperty.com

Score	Energy rating	Current	Potential
92+	A		
81-91	B		
69-80	C		
55-68	D		
39-54	E		
21-38	F		
1-20	G		



Keith Boyce DipPFS, Cert CII (MP)
Financial Adviser
36 Cregagh Road, Belfast, BT6 9EQ
T: 028 9073 2225 F: 028 9073 9096

E: keithboyce@mab.org.uk
W: mortgageadvicebureau.com/keithboyce