

**TO LET**

**Fortwilliam House, Edgewater Business Park, Edgewater Road, Belfast, BT3 9JQ**

**PROMINENT HEADQUARTER OFFICE BUILDING COMPRISING C. 8,503 SQ.FT. WITH UP TO 47 CAR PARKING SPACES**

**Lisney**

COMMERCIAL REAL ESTATE





**Lisney**

COMMERCIAL REAL ESTATE

## FEATURES

Self contained office building

Excellent views over Cavehill & Belfast Lough

Circa 8,503 sq ft across ground and first floor

47 dedicated on site parking spaces

### LOCATION

**Fortwilliam House is located within Edgewater Office Park development, an established office location on the North Foreshore, on the Northern outskirts of Belfast.**

Edgewater Road benefits from excellent transport links with easy access to the North and South via the M2, linking to the M1 and Westlink. The location also benefits from quick access to the City Centre via the Edgewater Road and Dargan Road.

The area also benefits from excellent bus links to the city centre and surrounds.

Edgewater Business Park provides an attractive environment with landscaped grounds, well maintained roads and views over Belfast Lough and Cavehill.

Occupiers in the vicinity include NASUWT, Ostick & Williams, Dairy Council NI, Bidvest Noonan and the Chartered Institute of Housing.

### DESCRIPTION

The subject property comprises a self-contained office building of circa 8,503 sq.ft across ground and first floors.

Internally the office accommodation is arranged around a central double height atrium, offering an impressive entrance to the building. Bathrooms are located at ground and first floor level at the rear of the lobby.

The accommodation is split into 4 "suites", two at ground floor and two at first floor. Each suite benefits from windows on three sides, offering light and bright accommodation throughout.

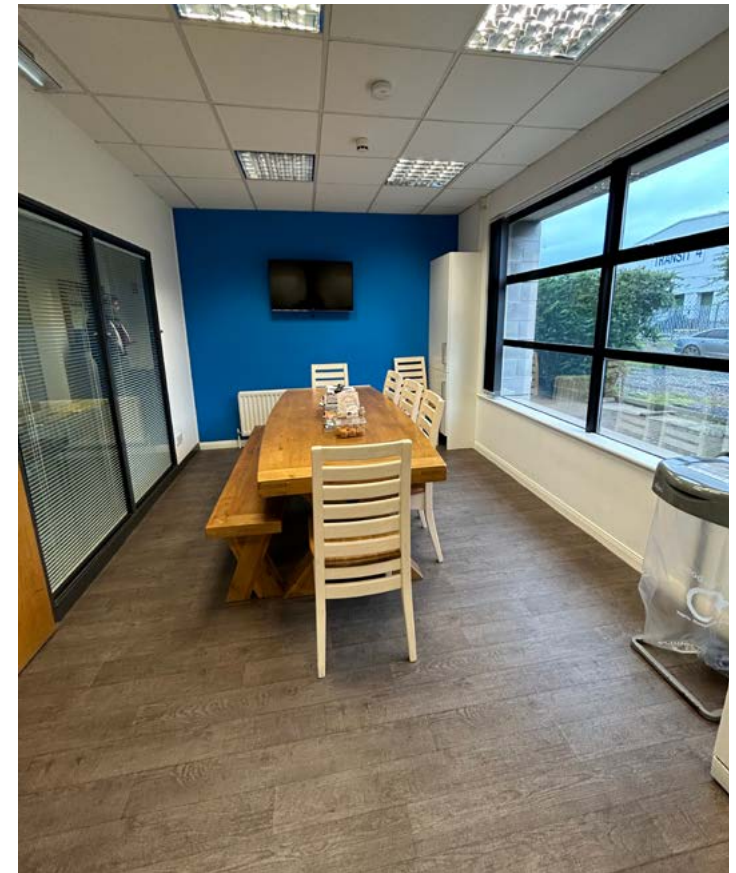
The property comprises a mix of open plan space with several private offices and boardrooms.

Facilities include separate male and female bathrooms at ground and first floor level, kitchens on both levels, buzzer entry to the building and and CCTV / Alarm system.

The property is fitted out as below;

- Air handling system;
- Perimeter Trunking
- Carpet tiles;
- Plastered & painted walls;
- Suspended ceilings with recessed fluorescent lighting.
- Opening windows on all elevations

The property benefits from 33 on-site parking spaces, with the option to rent an additional 14 parking spaces within the same carpark.



## ACCOMMODATION

	Sq. Ft	Sq. M
Ground Floor	395	4,252
First Floor	395	4,252
<b>TOTAL</b>	<b>790</b>	<b>8,503</b>

## RENT

£80,000 per annum exclusive.

## TERM

By way of negotiation.

## REPAIRS & INSURANCE

The space will be let on full repairing and insuring terms.





### **SERVICE CHARGE**

A service charge will be levied to cover an appropriate proportion of the cost of external repairs and maintenance, insurance, security and upkeep of common areas.

This is currently £4,570 + VAT per annum for the 2023 Service Charge Year

### **BUILDING INSURANCE**

The tenant is to reimburse the landlord in respect of the building insurance premium, which for the year 2023 is £2,305 plus VAT.

### **GROUND RENT**

The Estate Ground Rent is payable by the Tenant. The current Ground Rent for 2023 is £10,897 per annum .

### **RATES PAYABLE**

To be confirmed.

### **VAT**

All prices, outgoings and rentals are exclusive of, but may be liable to VAT.









## LOCATION



**Lisney**  
COMMERCIAL REAL ESTATE

### For further information:

**Lynn Taylor: 028 9050 1556 / 07813 020 181**

[ltaylor@lisney-belfast.com](mailto:ltaylor@lisney-belfast.com)

**Andrew Gawley: 028 9050 1552 / 07917 007 522**

[agawley@lisney-belfast.com](mailto:agawley@lisney-belfast.com)

### Lisney Commercial Real Estate

**3rd Floor, Montgomery House,  
29-33 Montgomery St., Belfast, BT1 4NX**

**Tel: 028 90 501 501**

**Email: [property@lisney-belfast.com](mailto:property@lisney-belfast.com)**

[lisney.com](http://lisney.com)   

Viewing Strictly by appointment with the sole letting agent Lisney.

The Directors of Lisney for themselves and for the vendors or lessors of this property whose agents they are give notice that (i) the particulars are set out as a general outline only for the guidance of intended purchasers or lessors, and do not constitute part of, an offer or contract; (ii) all descriptions, references to condition and necessary permissions for use and occupation, and other details are given without responsibility and any intending purchasers or tenants should not rely on them as statements or representations of fact but must satisfy themselves by inspection or otherwise as to the correctness of each of them; (iii) no person in the employment of the Directors of Lisney has any authority to make or give any representation or warranty whatever in relation to the property.

